



Coventry, RI

PROPERTY HIGHLIGHTS:

- 276 Apartment Homes
- 81 Affordable Homes (Rents based on 30% of adjusted gross income)
- 126 Elderly One and Two Bedroom Residences
- All utilities are included
- Pool with Clubhouse, Tennis Court and Basketball Court
- Laundry Facilities
- On-Site Management

WOODLAND APARTMENTS MANAGEMENT OFFICE

20 Woodland Drive • Coventry, RI 02816

Phone: (401) 821-8612

TTY: (800) 745-5555

Fax: (401) 821-2166

woodlandapts@hallkeen.com

HOURS: Monday - Friday 8:30am-5:00pm

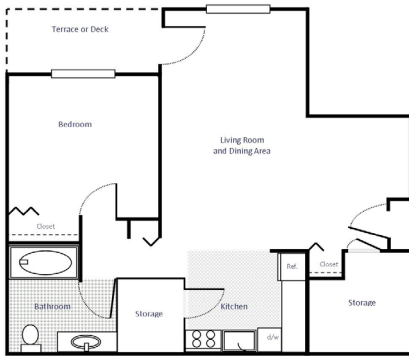
At **Woodland Apartments**, your new home awaits you in a quiet natural setting extending over 25 acres and a beautifully landscaped community. We are minutes from Route 95 and are conveniently located near the Providence metro, South County shoreline and beaches, local shopping, and all that Rhode Island has to offer!

Our residences feature homes for many lifestyles. One and two bedroom apartment homes and two-level townhouses feature spacious floor plans, walk-in closets, ample storage, full kitchens with separate dining areas, private patios and balconies.

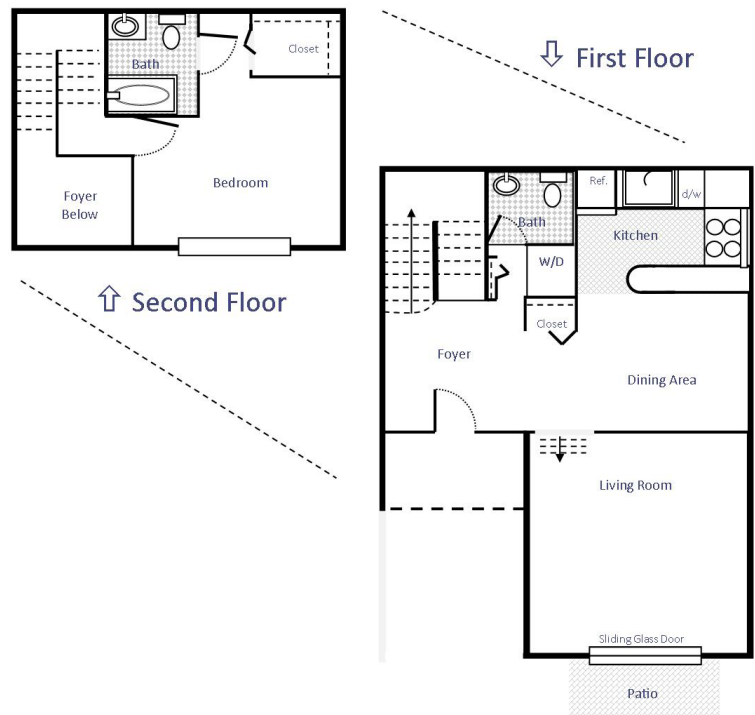
Woodland Apartments also has a building of 126 one and two bedroom apartment homes for residents 62 years and older or disabled. In addition to the community features listed on the left, the elderly/disabled building has elevators, an intercom and camera system, and controlled building access. Amenities include a large community room, billiards room, computer room, and sitting rooms.



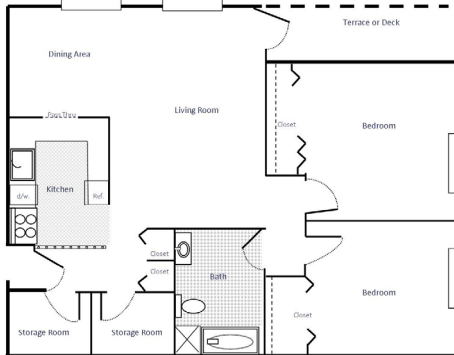
One Bedroom / One Bathroom



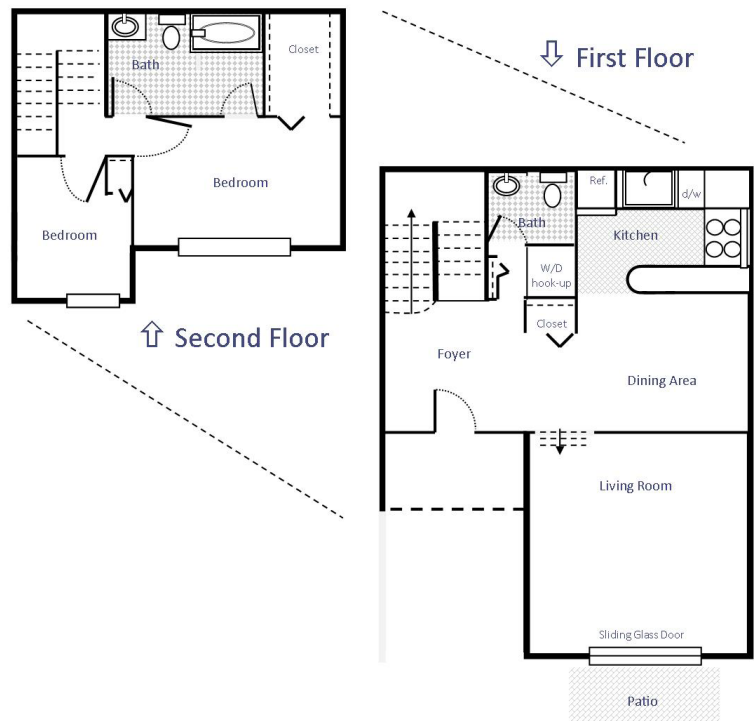
One Bedroom / One and One Half Bathroom Townhouse



Two Bedroom / One Bathroom



Two Bedroom / One and a Half Bathroom Townhouse



Floor plans and other information are estimates and approximate for illustration purposes only.