



# *Catering Et Hospitality*

Equipment



# TABLE OF



# CONTENTS

Pan Racks  
1-3

Material Handling  
4-5

Heater Proofers & Cabinets  
6-7

Shelving & Banquet Carts  
8-9

## Kitchen

Ingredient Bins, Sheet Pan Trucks, Film Wrappers, Glass & Cup Dollies,  
Aluminum Wall Shelves  
10-11

Can Racks & Stainless Steel Mobile Sinks  
12-13

Beverage & Dish Cabinets  
14

Stainless Steel Tables & Sinks  
15-17

Equipment Stands  
18-19

Safe & Secure  
Sanitary Cart, Security Cabinet, Lockers, Receiving Desks  
20-21

# PAN RACKS



## PAN RACK ALL WELDED



MODEL AL-1820B

Heavy duty aluminum frame with welded angle slides, 3" spacing between runners. 5" polyurethane swivel stem casters. Capacity: (20) 18" x 26" sheet pans, Wt. capacity per runner 30lbs Dimensions: 21"W x 26"L x 69¾"H

## HD PAN RACK REINFORCED UPRIGHTS

MODEL AL-1820B-XB



Heavy duty aluminum frame with welded angle slides, 3" spacing between runners. 5" polyurethane swivel stem casters. Capacity: (20) 18" x 26" sheet pans, Wt. capacity per runner 60lbs Dimensions: 21"W x 26"L x 69¾"H



## PAN RACK COVER CLEAR

Use Model SRC-583Z rack cover to protect food during transport while preserving freshness. Keep it safe! Freezer Rack covers also available.

## PAN RACK ALL WELDED - XTRA HEAVY DUTY



Xtra Heavy duty aluminum frame with welded angle slides, runner angels are 1<sup>1/4</sup>" x 2". Holds 18" x 26" and 14" x 18" sheet pans. 5" x 2" polyurethane swivel plate casters. Wt. capacity per runner 80lbs, rolling capacity 1000lbs. Other sizes available.

MODEL AL-1820-HD  
Dimensions: 21<sup>1/2</sup>"W x 26"L x 71<sup>1/2</sup>"H  
3" spacing between runners  
Holds: 20 - 18" x 26" Pans  
40 - 14" x 18" Pans



Many of our racks are also available in Stainless Steel.



# PAN



# RACKS



## STEAM PAN RACKS ALL WELDED



Heavy duty aluminum frame with welded angle slides, runners are 1" x 1<sup>1/2</sup>". Ideal for volume production of food stored in steam table pans- caterers, hotels, restaurants, casinos and hospitals. Holds 12" x 20" steam table pans by the lip, full, half and third size pans. 5" polyurethane swivel stem casters. Wt. capacity per runner 30lbs, rolling capacity 800lbs Racks are available in end loading sizes and in stainless steel.

**MODEL ALSPR-2212**  
Dimensions: 23<sup>7/8</sup>"W x 27<sup>3/8</sup>"L x 68<sup>1/2</sup>"H  
Holds 12 pans, 5" spacing between runners

**MODEL ALSPR-2220**  
Dimensions: 23<sup>7/8</sup>"W x 27<sup>3/8</sup>"L x 68<sup>1/2</sup>"H  
Holds 20 pans, 3" spacing between runners

**MODEL ALSPR-1320**  
Dimensions: 13<sup>7/8</sup>"W x 22<sup>3/8</sup>"L x 68<sup>1/2</sup>"H  
Holds 20 pans, 3" spacing between runners



## UNIVERSL RUNNER RACK ALL WELDED



Aluminum frame with welded angle slides, runners are 1<sup>1/4</sup>" x 3<sup>1/3</sup>". Medium duty rack for holding steam table pans and sheet pans. Holds 18" x 26" and 14" x 18" sheet pans, full, half, 1/3 size steam pans held by the lip. 5" polyurethane swivel stem casters. Wt. capacity per runner 30lbs, rolling capacity 800lbs.

**MODEL UARE-1218**  
Dimensions: 21"W x 26"L x 69"H  
Holds 12 18" x 26" sheet pans or 24 14" x 18" sheet pans  
5" spacing between runners

**MODEL UARE-2018**  
Dimensions: 21"W x 26"L x 69"H  
Holds 20 18" x 26" sheet pans or 40 14" x 18" sheet pans  
3" spacing between runners





## UNIVERSAL RUNNER RACK

### ALL WELDED - XTRA HEAVY DUTY



Xtra Heavy duty aluminum frame with welded angle slides, runner angels are 1<sup>1/4</sup>" x 3<sup>1/4</sup>". Holds both steam table pans and sheet pans. Holds 18" x 26" and 14" x 18" sheet pans, full, half and third size pans held on the lip. 5" x 2" polyurethane swivel plate casters. Wt. capacity per runner 80lbs, rolling capacity 800lbs

#### MODEL ALUN-1812-HD

Dimensions: 21<sup>1/2</sup>"W x 26"L x 71<sup>1/2</sup>"H

5" spacing between runners

Holds: 12 - 18" x 26" Pans

11 - 12" x 20" Pans

24 - 14" x 18" Pans

#### MODEL ALUN-1820-HD

Dimensions: 21<sup>1/2</sup>"W x 26"L x 71<sup>1/2</sup>"H

3" spacing between runners

Holds: 20 - 18" x 26" Pans

19 - 12" x 20" Pans

40 - 14" x 18" Pans



## UNIVERSAL WIDE RUNNER RACK

### ALL WELDED



Aluminum frame with welded angle slides, runner angels are 1<sup>1/4</sup>" x 6<sup>1/8</sup>". Holds steam table pans and sheet pans. Holds 18" x 26" and 14" x 18" sheet pans, full, half and third size pans held on the lip. 5" polyurethane swivel plate casters. Wt. capacity per runner 60lbs, rolling capacity 800lbs

#### MODEL UAR-1023

Dimensions: 26"W x 27"L x 70"H

6" spacing between runners

Pan Capacity: 10

#### MODEL UAR-1223

Dimensions: 26"W x 27"L x 70"H

5" spacing between runners

Pan Capacity: 12

#### MODEL UAR-2023

Dimensions: 26"W x 27"L x 70"H

3" spacing between runners

Pan Capacity: 20



# MATERIAL



# HANDLING

Winholt offers a full line of utility and material handling carts, in both steel and aluminum for the catering and hospitality industry as well as custom design to meet your exact requirements.

## FLAT BED CARTS ALUMINUM

### MODEL ALFC-2865-42H

Dimensions: 30"W x 66"L x 42"H

### MODEL ALFC-2851-42H

Dimensions: 30"W x 52"L x 42"H

### MODEL ALFC-2836-42H

Dimensions: 30"W x 37"L x 42"H



All welded aluminum construction. Solid deck with turned up lip to prevent slippage. (4) bumpers to protect walls and fixtures. Capacity 800lbs.

## TOW PICKING CART

This is an efficient solution for bulk transport. Multiple carts can be towed increasing your processing capacity.

Constructed of all welded steel, powder coated gray. Two solid shelves doubles the capacity, each supported by a tubular frame. High end handles keep totes in place. Pull handles make the carts easy to maneuver. Chalkboard writing surface to ID product and location. Base Load Capacity 500 to 1,100 lbs



Chalkboard writing surface to ID product and location.

### MODEL SC-2-2149-MO

Dimensions: 21"W x 50"L x 71½"H



Our carts will streamline and increase production!

## UTILITY CART



This is an efficient solution that will streamline your operation and increase production. Constructed of aluminum makes it light weight and easy to maneuver. Features: writing utensil tray, paper bag holder, hooks for plastic bags- making for a perfect working station. Bumpers prevent damage to fixtures, two shelf structure allows for additional storage and totes.



MODEL ALMCS-36-224-RCUH-HF  
Dimensions: 24"W x 45¾"L x 26¼"H



Put Your Logo  
Here

Great for  
transporting prepared  
meals



## ALUMINUM UTILITY CART



All welded design, for universal applications. Heavy duty channel construction all welded aluminum cart. Two shelf storage rolls easily on 5" polyurethane casters, two swivel and two rigid. Dimensions: 20"W x 42"L x 36"H. Other sizes available.

MODEL ALUC-2-2036-36H





# HEATER PROOFER CABINETS



Keep Food Warm- Heater Proofers Forced air design provide even heat distribution. Clear Lexan Door. Easy dual proof/heat control: "Proof/Humidity" mode up to 95% humidity at 110°F(43°C), "Heat" mode: Maximum temperatures up to 180°F (82°C),Electrical: 120 VAC-60 Hz, 14 amps- 1440 Watts- Standard 110 outlet.



## STANDARD HEATER PROOFER

MODEL NHPL-1836C-DGT

Non-Insulated Unit, Corner Bumpers  
Digital Drawer  
Pan Capacity: (35) 18" x 26"  
Dimensions: 21"W x 30¾"L x 66½"H



## INSULATED HEATER PROOFER

MODEL INHPL-1836C-DGT

Insulated Unit  
Digital Drawer  
Pan Capacity: (35) 18" x 26"  
Dimensions: 24"W x 34"L x 68H



## UNIVERSAL RUNNER HEATER PROOFER

MODEL NHPL-1825-UNC-DGT

Non-Insulated Unit  
Digital Drawer, Corner Bumpers  
Pan Capacity: (28) 18" x 26"  
Dimensions: 26"W x 32"L x 72"H



## HALF HEIGHT HEATER PROOFER

MODEL NHPL-1810HHC

Non-Insulated Unit, Poly Top Work Surface  
Analog Drawer, Corner Bumpers  
Pan Capacity: (10) 18" x 26"  
Dimensions: 21"W x 30¾"L x 30½"H



Aluminum enclosed mobile cabinets stores and transports goods, perfect for meal delivery, sanitary and rustproof.

## ENCLOSED MOBILE CABINETS

All welded reinforced non-insulated aluminum. 1-1/2" spacing between runners. Maneuverable on (4) 5" polyurethane swivel plate double ball race casters.



**MODEL EC1840-C**  
21" W x 27" L x 68" H  
Capacity 40 18" x 26" Trays

**MODEL EC1816-C**  
21" W x 27" L x 32" H  
Capacity 16 18" x 26" Trays

**MODEL EC1824-C**  
21" W x 27" L x 44" H  
Capacity 24 18" x 26" Trays

**MODEL EC1832-C**  
21" W x 27" L x 56" H  
Capacity 32 18" x 26" Trays



Also available with a clear lexan door  
great for visibility!  
EC1840-C-LD



**MODEL EC1816-C**  
Holds 16 Trays



**MODEL EC1824-C**  
Holds 24 Trays



**MODEL EC1832-C**  
Holds 32 Trays



**MODEL EC1840-C**  
Holds 40 Trays

# SHELVING



# BANQUET CARTS



## CANTILEVER SHELVING



MODEL SCAS-2148-4-SU  
(4) SHELF TUBULAR STARTER KIT

### INCLUDES:

- (1) RIGHT UPRIGHT
- (1) LEFT UPRIGHT
- (2) CROSS BRACES
- (4) SHELVES
- (1) HARDWARE KIT

Dimensions: 21"W x 48"L x 72"H

All welded aluminum tubular shelving. Maximum capacity 2,500 lb per section. Maximizes storage, free standing shelving allows access to all corners. Other sizes and kits available.

## ALUMINUM DUNNAGE RACKS

### HEAVY DUTY

All welded 1-3/4" x 1-1/2" aluminum tube construction. Mitered edge for safety. 24" width also available

MODEL ALSQ-3-1220  
20" W x 36" L x 12" H, capacity 3000lbs

MODEL ALSQ-4-1220  
20" W x 48" L x 12" H, capacity 2500lbs

MODEL ALSQ-4-1220  
20" W x 60" L x 12" H, capacity 2000lbs



### ECONOMY

All welded 1-1/2" x 1-1/2" aluminum tube construction. Mitered edge for safety. 24" width also available

MODEL DASQ-3-1220  
20" W x 36" L x 12" H, capacity 2100lbs

MODEL DASQ-4-1220  
20" W x 48" L x 12" H, capacity 1800lbs

MODEL ALSQ-4-1220  
20" W x 60" L x 12" H, capacity 1500lbs

## PLASTIC DUNNAGE RACKS

MODEL DPLSQ-3-1222-BK  
22" W x 36" L, Black

MODEL DPLSQ-4-1222-BK  
22" W x 48" L, Black

MODEL DPLSQ-5-1222-BK  
22" W x 60" L, Black

MODEL PLSQ-3-1222-GY  
22" W x 36" L, Gray, NSF

MODEL PLSQ-4-1222-GY  
22" W x 48" L, Gray, NSF

MODEL PLSQ-5-1222-GY  
22" W x 60" L, Gray, NSF



Solid one piece plastic construction. 12" height meets all sanitary health codes. All weight capacities are 2,200lbs.



## HEAVY DUTY QUEEN MARY BANQUET CARTS



All welded construction in stainless steel or aluminum. Standard shelf configuration, 3 lips flanged up and front lip down. Wrap around bumper and welded handle. 3 shelf- 27" between shelves, 4 shelf- 17<sup>19/32</sup>" between shelves, 5 shelf- 13<sup>1/2</sup>" between shelves.



### Stainless Steel

MODEL BNQT-3-SS

28" W x 60" L x 65<sup>7/8</sup>" H, 3 SHELVES

MODEL BNQT-4-SS

28" W x 60" L x 65<sup>7/8</sup>" H, 4 SHELVES

MODEL BNQT-5-SS

28" W x 60" L x 65<sup>7/8</sup>" H, 5 SHELVES

### Aluminum

MODEL BNQT-3

28" W x 60" L x 65<sup>7/8</sup>" H, 3 SHELVES

MODEL BNQT-4

28" W x 60" L x 65<sup>7/8</sup>" H, 4 SHELVES

MODEL BNQT-5

28" W x 60" L x 65<sup>7/8</sup>" H, 5 SHELVES

## STAINLESS STEEL UTILITY CARTS



All welded design, great cart for healthcare, schools, hotels and correctional facilities (ask about the correctional package add-on). 16 Gauge shelves and tubing. Picture shown with two shelves.

Heavy Duty - Rolling Capacity - 2800lbs

Two Shelves

MODEL UC-2-1832SS

18" W x 38" L x 37<sup>1/2</sup>" H

MODEL UC-2-2133SS

21" W x 39" L x 37<sup>1/2</sup>" H

MODEL UC-2-2149SS

21" W x 55" L x 37<sup>1/2</sup>" H

Three Shelves

MODEL UC-3-1832SS

18" W x 38" L x 37<sup>1/2</sup>" H

MODEL UC-3-2133SS

21" W x 39" L x 37<sup>1/2</sup>" H

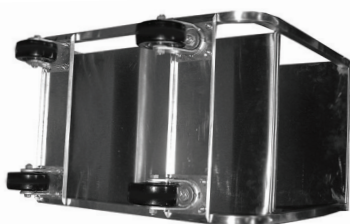
MODEL UC-3-2149SS

21" W x 55" L x 37<sup>1/2</sup>" H

Heavy Duty  
2 Shelves



Heavy Duty  
reinforced construction

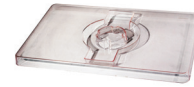




## TRIPLE INGREDIENT BIN

### MODEL 148PIB

Aluminum frame construction. Ideal height conveniently fits under work tables, saving valuable space. Includes 3 clear covers. Total capacity 55lbs flour, 75lbs sugar. Dimensions: 17" W x 31½" L x 28¾" H



## SHEET PAN TRUCKS



### MODEL D2027A-BPC & D2027-BPC

CAPACITY 300LBS

Dimensions: 22"W x 27"L x 32"H

### MODEL D2027-BPC-51H-HD

CAPACITY 400LBS

Dimensions: 22½"W x 27¼"L x 51"H

All welded aluminum construction. Storing and transporting 18" x 26" trays. Model D202A-BPC has top cross bars for added tray capacity.

USA & GLOBAL  
MANUFACTURING





## FILM WRAPPER

### MODEL WHSS-1

Aluminum and stainless steel construction. Sanitary and easily maintained. Temperature controlled Teflon covered hot plate prevents sticking. Seals film to ensure food stays fresh and protected. Electrical loop rated @8AMPS, 115 volts; overall watts 750. Dimensions: 22<sup>1/4</sup>"W x 24"L x 5"H



Wrap it up for freshness!

## CUP, GLASS & PLATE RACK DOLLIES

### MODEL D2020

CAPACITY 600LBS

Dimensions: 21<sup>1/2</sup>"W x 21<sup>1/2</sup>"L x 8<sup>1/8</sup>"H

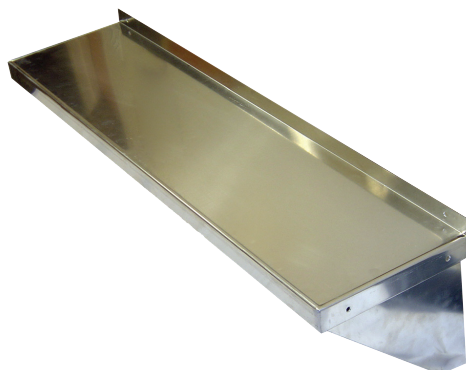
### MODEL D2040-LD

CAPACITY 600LBS

Dimensions: 21<sup>1/2</sup>"W x 41<sup>1/2</sup>"L x 8<sup>1/8</sup>"H



All welded aluminum construction. Single and double wide. Double wide for double the capacity great for hotels, convention centers and caterers.



## ALUMINUM WALL SHELVES KNOCK-DOWN



### MODEL ALWMS-1236

Dimensions: 12"W x 36"L

### MODEL ALWMS-1260

Dimensions: 12"W x 60"L

Aluminum construction. Easy to assemble and install. Shelves feature a marine edge to help prevent spills from going over the edge.





Organizes can stock and maximizes available space. Self-feeding feature keeps stock rotated. Vertical uprights and cross braces are constructed of 1-1/2" aluminum tubing



## CAN DISPENSING RACK

### Full Size

MODEL CR-162

All welded aluminum, CR-162 units hold 162 #10 cans or 216 # 5 cans. Dimensions:

25<sup>1/4</sup>"W x 35"L x 71"H



## CAN DISPENSING RACK

### Full Size, Mobile

MODEL CR-162M

All welded aluminum, CR-162M units hold 162 #10 cans or 216 # 5 cans. Mobile unit has 5" polyurethane casters, two with brakes.

Dimensions: 27<sup>1/2</sup>"W x 35"L x 76"H



## CAN DISPENSING RACK

### Half Size, Mobile, Polytop

MODEL CR-54PT

All welded aluminum, CR-54 holds 54 #10 cans or 72 #5 cans and has a polytop ideal for a work station. Mobile unit has 5" polyurethane casters, two with brakes. Half size racks are also available with stainless steel and aluminum tops. Dimensions: 27<sup>1/2</sup>"W x 35"L x 35"H



# STAINLESS STEEL MOBILE HAND SINK



Efficient solution for facility areas with restricted or limited availability of plumbing, while ensuring appropriate levels of hygiene. Faucet blends hot and cold water. UL listed water heater and pump. 5 gallon clean water storage and 6 gallon waste water storage. Soap dispenser and paper towel holder.

Model STCT-BHD2426PUMP-KG  
Unit with valve faucet

Model STCT-BHD2426PUMP-AEF-KT  
Unit with electronic eye faucet

Keep it Sanitary  
Wash Your Hands!



5 Gallon clean water storage and 6 gallon waste water storage. Faucet blends hot and cold water. 110° F water supplied at .32 GPM

Model STCT-BHD2426PUMP-WH  
Economy Mobile Hand Sink

6" boxed back splash, 5 Gallon clean water storage and 6 gallon waste water storage. Faucet blends hot and cold water. 110° F water supplied at .32 GPM, UL listed water heater and pump.





## BEVERAGE COUNTER

MODEL STCT-3072-BC-R - Sink on right

MODEL STCT-3072-BC-L - Sink on Left

Dimensions: 30" W x 72" L

Stainless beverage counter 14GA top with 16GA sides. 10" H back-splash with 2" return. Sink is 14" x 16" x 12" Deep available on the left (L) or right (R) side. No drip marine edge on 3 sides, URN trough. GFI duplex outlet mounted in backsplash, hardware sold separately.



## DISH CABINET

MODEL STCT-1572-DC

Dimensions: 15" W x 72" L

MODEL STCT-1872-DC

Dimensions: 18" W x 72" L

Stainless steel 14GA top with 16GA sides. Fixed mid shelf starts at 20" H with 12" spacing. Available in lengths of 48", 60", 84" and 96". In depths of 15" and 18". 35" height with adjustable feet. 96" lengths or longer have 6 legs. Custom sizes available.





Winholt offers a full line of stainless steel fabrication, which includes but not limited to, chef counters, sinks, tables, hand sinks, drop in sinks, clean and soiled dish tables, wall and table mounted shelves, pass-thru shelves and much more. Reach out to us with your product specifications and we will custom design and build it for you.

## STAINLESS STEEL WORK TABLES



All welded stainless steel 16 gauge construction.  
All TIG welded and shipped set up. High polish finish. Stainless steel hat channels deaden sound and reinforce the top to maintain a level work surface.

Work Table, 16/304 stainless steel top, open with cross-rails & legs with clad bullet feet

MODEL DTR-3036 36" W x 30" D x 34" H

MODEL DTR-3048 48" W x 30" D x 34" H

MODEL DTR-3060 60" W x 30" D x 34" H



Work Table, 16/304 stainless steel top, fixed open under-shelf & legs with clad bullet feet

MODEL DTS-3036 36" W x 30" D x 34" H

MODEL DTS-3048 48" W x 30" D x 34" H

MODEL DTS-3060 60" W x 30" D x 34" H

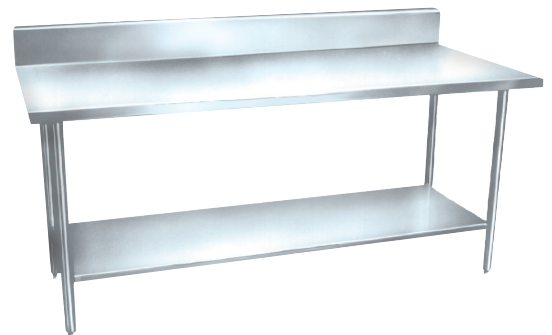


16/304 stainless steel top with 6" H backsplash, fixed open under-shelf & legs with adjustable clad bullet feet

MODEL DTSBB-3036 36" W x 30" D x 34" H

MODEL DTSBB-3048 48" W x 30" D x 34" H

MODEL DTSBB-3060 60" W x 30" D x 34" H



# STAINLESS STEEL SINKS



Single Tub



Double Tub



Model	Product	Description
WS1T1620	Stainless Steel Sinks 1 Compartment	Sink, one compartment, 20" front-to-back x 16" wide x 12" deep, 9" backsplash with 45° return, 16/304 stainless steel, stainless steel legs & adjustable feet, NSF
WS1T1620-2D18	Stainless Steel Sinks 1 Compartment	Sink, one compartment, with left & right hand 18" drainboards, 20" front-to-back x 16" wide x 12" deep, 9" backsplash with 45° return, 16/304 stainless steel, stainless steel legs & adjustable feet, NSF
WS1T1818	Stainless Steel Sinks 1 Compartment	Sink, one compartment, 18" front-to-back x 18" wide x 12" deep, 9" backsplash with 45° return, 16/304 stainless steel, stainless steel legs & adjustable feet, NSF
WS1T1818-2D18	Stainless Steel Sinks 1 Compartment	Sink, one compartment, with left & right-hand 18" drainboards, 18" front-to-back x 18" wide x 12" deep, 9" backsplash with 45° return, stainless steel legs & adjustable feet, 16/304 stainless steel, NSF
WS1T2020	Stainless Steel Sinks 1 Compartment	Sink, one compartment, 20" front-to-back x 20" wide x 12" deep, 9" backsplash with 45° return, 16/304 stainless steel, stainless steel legs & adjustable feet, NSF
WS1T2020-2D18	Stainless Steel Sinks 1 Compartment	Sink, one compartment, with left & right-hand 18" drainboards, 20" front-to-back x 20" wide x 12" deep, 9" backsplash with 45° return, stainless steel legs & adjustable feet, 16/304 stainless steel, NSF
WS1T2424	Stainless Steel Sinks 1 Compartment	Sink, one compartment, 24" front-to-back x 24" wide x 12" deep, 9" backsplash with 45° return, 16/304 stainless steel, stainless steel legs & adjustable feet, NSF
WS1T2424-2D18	Stainless Steel Sinks 1 Compartment	Sink, one compartment, with left & right hand 18" drainboard, 24" front-to-back x 24" wide x 12" deep, 9" backsplash with 45° return, 16/304 stainless steel, stainless steel legs & adjustable feet, NSF
WS2T1620	Stainless Steel Sinks 2 Compartment	Sink, two compartment, 20" front-to-back x 16" wide x 12" deep with backsplash, stainless steel legs & adjustable feet, 16/304 stainless steel, NSF
WS2T1620-2D18	Stainless Steel Sinks 2 Compartment	Sink, two compartment, with left & right-hand 18" drainboards, 20" front-to-back x 16" wide x 12" deep, 9" backsplash with 45° return, stainless steel legs & adjustable feet, 16/304 stainless steel, NSF
WS2T1818	Stainless Steel Sinks 2 Compartment	Sink, two compartment, 18" front-to-back x 18" wide x 12" deep with backsplash, stainless steel legs & adjustable feet, 16/304 stainless steel, NSF
WS2T1818-2D18	Stainless Steel Sinks 2 Compartment	Sink, two compartment, with left & right-hand 18" drainboards, 18" front-to-back x 18" wide x 12" deep, 9" backsplash with 45° return, stainless steel legs & adjustable feet, 16/304 stainless steel, NSF

# STAINLESS STEEL SINKS 1, 2 AND 3 TUBS

All welded stainless steel 16 gauge construction. All TIG welded and shipped set up. High polish finish. Stainless steel legs & adjustable feet. Standard lead time applies, hardware sold separately.

Double Tub



Triple Tub



Model	Product	Description
WS2T2020	Stainless Steel Sinks 2 Compartment	Sink, two compartment, 20" front-to-back x 20" wide x 12" deep with backsplash, stainless steel legs & adjustable feet, 16/304 stainless steel, NSF
WS2T2020-2D18	Stainless Steel Sinks 2 Compartment	Sink, two compartment, with left & right-hand 18" drainboards, 20" front-to-back x 20" wide x 12" deep, 9" backsplash with 45° return, stainless steel legs & adjustable feet, 16/304 stainless steel, NSF
WS2T2424	Stainless Steel Sinks 2 Compartment	Sink, two compartment, 24" front-to-back x 24" wide x 12" deep with backsplash, stainless steel legs & adjustable feet, 16/304 stainless steel, NSF
WS2T2424-2D18	Stainless Steel Sinks 2 Compartment	Sink, two compartment, with left & right hand 24" drainboard, 24" front-to-back x 18" wide x 12" deep, 9" backsplash with 45° return, 16/304 stainless steel, stainless steel legs & adjustable feet, NSF
WS3T1620	Stainless Steel Sinks 3 Compartment Sinks	Sink, three compartment, 20" front-to-back x 16" wide x 12" deep with backsplash, stainless steel legs & adjustable feet, 16/304 stainless steel, NSF
WS3T1620-2D18	Three (3) Compartment Sink	Sink, three compartment, with left & right hand 18" drainboard, 20" front-to-back x 16" wide x 12" deep, 9" backsplash with 45° return, 16/304 stainless steel, stainless steel legs & adjustable feet, NSF
WS3T1818	Stainless Steel Sinks 3 Compartment Sinks	Sink, three compartment, 18" front-to-back x 18" wide x 12" deep with backsplash, stainless steel legs & adjustable feet, 16/304 stainless steel, NSF
WS3T1818-2D18	Three (3) Compartment Sink	Sink, three compartment, with left & right hand 18" drainboard, 18" front-to-back x 18" wide x 12" deep, 9" backsplash with 45° return, 16/304 stainless steel, stainless steel legs & adjustable feet, NSF
WS3T2020	Stainless Steel Sinks 3 Compartment Sinks	Sink, three compartment, 20" front-to-back x 20" wide x 12" deep with backsplash, stainless steel legs & adjustable feet, 16/304 stainless steel, NSF
WS3T2020-2D18	Three (3) Compartment Sink	Sink, three compartment, with left & right hand 18" drainboard, 20" front-to-back x 20" wide x 12" deep, 9" backsplash with 45° return, 16/304 stainless steel, stainless steel legs & adjustable feet, NSF
WS3T2424	Stainless Steel Sinks 3 Compartment Sinks	Sink, three compartment, 24" front-to-back x 24" wide x 12" deep with backsplash, stainless steel legs & adjustable feet, 16/304 stainless steel, NSF
WS3T2424-2D18	Three (3) Compartment Sink	Sink, three compartment, with (2) 18" drain-boards, 24" front-to-back x 24" wide x 12" deep with backsplash, stainless steel legs & adjustable feet, 16/304 stainless steel, NSF



# EQUIPMENT



# STANDS



## EQUIPMENT STAND CONVECTION OVEN



MODEL ES-CO-3048M

Dimensions: 30" W x 48" L x 29" H

Designed to fit most convection ovens. Convenient right hand pan slides, expands storage area. Constructed of all welded 16 gauge stainless steel.



## EQUIPMENT STANDS



All welded stainless steel 16 gauge construction. Rear and end-splash turned up 2". All have a 24" working height. Lower shelf for additional storage.

MODEL ES-M-2428 24" W x 28" L x 24" H

MODEL ES-M-2436 24" W x 36" L x 24" H



## EQUIPMENT STAND SCALE



MODEL ES-S1622

Dimensions: 22" W x 16" L x 38" H

Ideal to hold scales. 38" working height, two lower shelves for storage, 13" between shelves.



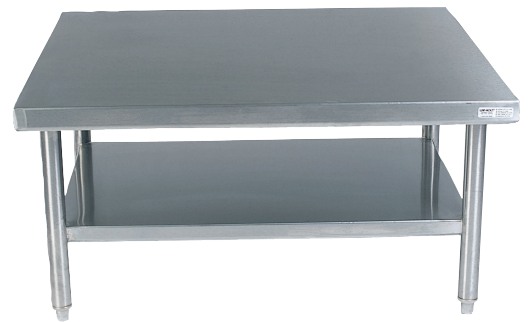
## EQUIPMENT STAND MACHINE



### MODEL ES-S2428H28

Dimensions: 24" W x 28" L x 28" H

Ideal 24" x 28" top for mixer or grinder. 28" working height. Lower shelf for storage. 1000lb weight capacity. 16 gauge stainless steel.



## EQUIPMENT STANDS MIXER/SLICER



### MODEL ES-MX2424-14GA

24" W x 24" L x 24" H

### MODEL ES-MX2430-14GA

24" W x 30" L x 24" H

### MODEL ES-MX3030-14GA

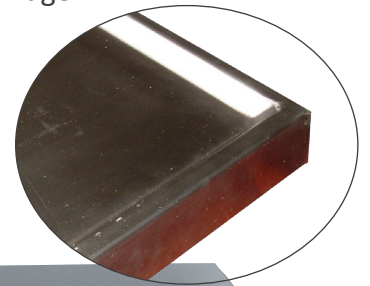
30" W x 30" L x 24" H

### MODEL ES-MX3036-14GA

30" W x 36" L x 24" H

All welded design, 14 gauge top with 16 gauge under-shelf. 12" between the shelf and table top. No drip marine edge on the perimeter of the table top.

Marine  
Edge



# SAFE &



# SECURE

## SANITIZING CART

### Sanitize Surfaces to Keep Your Customers & Associates Safe!

Lightweight aluminum construction makes this cart easy to maneuver throughout any operation. Features top tray, two shelves for additional storage, garbage and paper towel holder. Holds everything you need to keep your facility safe and clean.

Model D-2032-MP

Dimensions: 20-1/2" W x 34-7/32" L x 40-1/8" H



### Maintain Sanitary Conditions by Consistent Cleaning!



## SECURITY LOCKING CABINET

### Secure Valuable Inventory!

Heavy Duty locking cabinet is the perfect solution to secure valuable inventory. All welded steel, with steel mesh sides that assist in identifying contents. Perfect for liquor storage. Powder coated silver gray. Two hinged doors and top locking mechanism with pad lock loop to secure. This unit has two adjustable shelves, other sizes available.. Push handle for easy maneuvering.

Model EC-3-2448-2ADJ

Dimensions: 31-1/2" W x 48" L x 63" H





# ASSOCIATE STEEL LOCKERS

MULTI DOOR, TWO DOOR, 5 DOOR, WALL MOUNTED AND GARMENT LOCKERS

Multi-user steel lockers, all welded, ships set up ready to use. Door pulls accept padlocks for positive latching. Doors are mesh grid vented. All have closed bases.

## MODEL WL-21

12" W x 12" D x 78"H  
1 column, 2 door, beige

## MODEL WL-618

36" W x 12" D x 78"H  
3 columns, 18 door, beige

## MODEL WL-66

12" W x 12" D x 78"H  
1 column, 6 doors, beige

## MODEL WL-55

12" W x 12" D x 66"H  
1 column, 5 doors, beige

## MODEL MSLCK-1

Combination Lock



# RECEIVING DESKS

We offer a full line of receiving desks in both steel and stainless steel for sanitary areas. Other designs available.

## MODEL RDWN-1

Dimensions: 22"W x 24"L x 12"H  
Wall mount, lockable compartment, Gray Steel



## MODEL RDSWN-4

Dimensions: 32½"W x 30"L x 50"H  
Open base, lockable compartment, Gray Steel



## MODEL RDSWN-5

Dimensions: 32½"W x 30"L x 50"H  
Closed Base, lockable compartment, Gray Steel



# *Catering Et Hospitality*

## Equipment



Winholt Equipment Group  
20 Crossways Park North, Suite 205  
Woodbury, NY 11797  
800.444.3595 sales@winholt.com

NEW YORK - PENNSYLVANIA - TEXAS - CALIFORNIA

USA & GLOBAL  
MANUFACTURING

