

# SESCO

Food Service Equipment



## PRODUCT Guide 2025

When you need it  
**yesterday**



Many products able to ship  
same day if ordered by noon

\* Call for details



**Call Kelly Johnson**  
**734.476.1401**  
kellyj@sesco.biz

**SESCO**  
5705 Valley Belt Rd  
Independence, OH 44131

\* Please contact customer service to check availability  
as we strive to maintain proper inventory levels.

**Main: 800.222.0558**  
**Fax: 800.251.7717**

Revised 7-2025

**WWW.SESCO.BIZ**

## Quick Ship PRODUCTS

**blendtec**  
COMMERCIAL



**Connoisseur**  
825 Pkgs

C825C11Q-B1GB1A  
Includes (2) 75 oz FourSide™ jars  
C825C11Q-B1GB1D  
Includes (2) 90 oz WildSide™ jars



**Stealth**  
885 Pkgs  
World's Quietest  
Commercial Blender

S885C2901-B1GB1A  
Includes (2) 75 oz FourSide™ jars  
S885C2901-B1GB1D  
Includes (2) 90 oz WildSide™ jars

**STEALTH NITRO X**



**SNBS2C2901-B1K**  
Includes (2) Micronizers & Stands 41-605-03  
(1) set of adapter rings 12, 16, 24, 32 oz  
World's Quietest  
Commercial Blender

**No Waste - By the Cup  
Blending  
Stealth Nitro - by Blendtec**



Four Side



Wild Side



JRE-610



JRE-612



Hard Lid



Soft Lid

### ACCESSORIES

<b>40-609-60</b>	(FourSide-V) FourSide™ Jar. 75 oz. capacity jar with measurements up to 32 oz., includes: black vented Gripper™ lid, small tuned wingtip blade, jar markings in oz., ml. and cup indicators, Eastman Tritan™ copolyester construction, SPA-free, clear
<b>40-609-61</b>	(FourSide-S) FourSide™ Jar. 75 oz. capacity jar with measurements up to 32 oz., includes: black soft lid, small tuned wingtip blade, jar markings in oz., ml. and cup indicators (for use ONLY within sound enclosure), Eastman Tritan™ copolyester construction, SPA-free, clear
<b>40-609-62</b>	(FourSide-H) FourSide™ Jar. 75 oz. capacity jar with measurements up to 32 oz., includes: black hard lid, small tuned wingtip blade, jar markings in oz., ml. and cup indicators (for use ONLY within sound enclosure), Eastman Tritan™ copolyester construction, SPA-free, clear
<b>40-630-61</b>	(WildSide-S) WildSide™ Jar. 90 oz. capacity jar with measurements up to 44 oz. includes black soft lid, large tuned wingtip blade, jar markings in oz., ml. and cup indicators (for use ONLY within sound enclosure), Eastman Tritan™ copolyester construction, SPA-free, clear
<b>40-630-62</b>	(WildSide-H) WildSide™ Jar. 90 oz. capacity jar with measurements up to 44oz., includes: black hard lid, large tuned wingtip blade, jar markings in oz., ml. and cup indicators (for use ONLY within sound enclosure), Eastman Tritan™ copolyester construction, BPA-free, clear
<b>JRE-610</b>	(RR) Rapid Rinser™ Sprayer ONLY, includes: 6' flexible nylon-reinforced tubing with 3/8" compression fitting for water hook-up (minimum 60psi recommended)
<b>JRE-612</b>	(RRS) Rapid Rinser™ Station Complete Unit includes: Rapid Rinser™ sprayer & base, 6' flexible nylon-reinforced tubing with 3/8" compression fitting for water hook-up (minimum 30psi recommended), stainless steel nozzle, 120° spray nozzle coverage
<b>40-209-01-SRV</b>	(HardLid-BL) Hard Lid, built to produce an air tight seal, for smoothies, frozen drinks, slushes, etc. to be used on jars within sound enclosures, black, (fits both Wildside+ and Fourside jars), (10 per pack)
<b>40-210-02-SRV</b>	Soft Lid, built to produce an air tight seal, for smoothies, frozen drinks, slushes, etc. to be used on jars within sound enclosures, black, (fits both Wildside+ and Fourside jars), (10 per pack)



# THE REFRIGERATORS



# Refrigerators



KCBM180RQY



KCHRI27R1DRE



KCHRI27R2HDR



KCHRI54R2DRE

## Upright Reach in Refrigerators

PNC	model	description	unit WxHxD	shipping weight
<b>738079</b>	KCBM180RQY	18 cu ft. Single Door Reach In Refrigerator, Back Room Application	32"x31"x76"	315 lb
<b>738241</b>	KCHRI27R1DRE	1-door reach-in refrigerator, stainless steel, 23 cubic feet, R290 refrigerant gas, +33/+41°F - Energy star	26,8"x82,3"x32,7"	306 lb
<b>738280</b>	*KCHRI27R2HDR	2-half door reach-in refrigerator, stainless steel, 23 cubic feet, R290 refrigerant gas, +33/+41°F	26,8"x82,3"x31,9"	315 lb
<b>738242</b>	KCHRI54R2DRE	2-door reach-in refrigerator, stainless steel, 49 cubic feet, R290 refrigerant gas, +33/+41°F - Energy Star	53,9"x82,3"x32,7"	489 lb



KCHRI54R4HDR



KCHRI81R3DR



KCHRI27R1GDR



KCHRI54R2GDR

## Upright Reach in Refrigerators

PNC	model	description	unit WxHxD	shipping weight
<b>738282</b>	*KCHRI54R4HDR	4-half door reach-in refrigerator, stainless steel, 49 cubic feet, R290 refrigerant gas, +33/+41°F	53,9"x82,3"x31,9"	525 lb
<b>738243</b>	KCHRI81R3DR	3-door reach-in refrigerator, stainless steel, 72 cubic feet, R290 refrigerant gas, +33/+41°F	81"x82,3"x32,7"	668 lb
<b>738278</b>	*KCHRI27R1GDR	1-glass door reach-in refrigerator, stainless steel, 23 cubic feet, R290 refrigerant gas, +33/+41°F - Energy star	26,6"x82,3"x31,9"	366 lb
<b>738281</b>	*KCHRI54R2GDR	2-glass door reach-in refrigerator, stainless steel, 49 cubic feet, R290 refrigerant gas, +33/+41°F - Energy Star	53,9"x82,3"x31,9"	562 lb

\* = Special Order



# Refrigerators



KCHGM26R



KCHGM12R



KCHGM48R



KCHGM72R

## Merchandiser Refrigerators

PNC	model	description	unit WxHxD	shipping weight
<b>738248</b>	KCHGM26R	1-glass door merchandiser refrigerator, black, 26 cubic feet, R290 refrigerant gas, +33/+41°F	28,3"x79,5"x33,9"	342 lb
<b>738247</b>	KCHGM12R	1-glass door merchandiser refrigerator, black, 12 cubic feet, R290 refrigerant gas, +33/+41°F	25"x61,8"x26"	254 lb
<b>738249</b>	KCHGM48R	2-glass door merchandiser refrigerator, black, 48 cubic feet, R290 refrigerant gas, +33/+41°F	54"x79,5"x31,9"	540 lb
<b>738308</b>	KCHGM72R	3-glass door merchandiser refrigerator, black, 72 cubic feet, R290 refrigerant gas, +33/+41°F	81"x79,5"x31,9"	732 lb



KCHUC27R



KCHUC48R



KCHUC60R



KCHUC72R



KCHUC27.2DR

## Undercounter Refrigerators

PNC	model	description	unit WxHxD	shipping weight
<b>738263</b>	KCHUC27R	1-door undercounter refrigerator, 27", R600a refrigerant gas, 33/+41°F, stainless steel	27,8"x35,5"x29,9"	185 lb
<b>738264</b>	KCHUC48R	2-door undercounter refrigerator, 48", R600a refrigerant gas, 33/+41°F, stainless steel	48,2"x35,5"x29,9"	278 lb
<b>738291</b>	KCHUC60R	2-door undercounter refrigerator, 60", R600a refrigerant gas, 33/+41°F, stainless steel	61,3"x35,5"x29,9"	313 lb
<b>738292</b>	KCHUC72R	3-door undercounter refrigerator, 72", R600a refrigerant gas, 33/+41°F, stainless steel	71,5"x35,5"x29,9"	368 lb
<b>738290</b>	*KCHUC27.2DR	2-drawer undercounter refrigerator, 27", R600a refrigerant gas, 33/+41°F, stainless steel	27,6"x35,5"x29,9"	185 lb

# Refrigerators



KCHUCWT27R



KCHUCWT48R



KCHUCWT60R



KCHUCWT72R

## Undercounter Refrigerators with worktops

PNC	model	description	unit WxHxD	shipping weight
<b>738299</b>	*KCHUCWT27R	1-door undercounter refrigerators with worktop, 27", R600a refrigerant gas, 33/+41°F, stainless steel	27,8"x39,4"x29,9"	190 lb
<b>738300</b>	*KCHUCWT48R	2-door undercounter refrigerators with worktop, 48", R600a refrigerant gas, 33/+41°F, stainless steel	48,2"x39,4"x29,9"	284 lb
<b>738301</b>	*KCHUCWT60R	2-door undercounter refrigerators with worktop, 60", R600a refrigerant gas, 33/+41°F, stainless steel	61,3"x39,4"x29,9"	320 lb
<b>738302</b>	*KCHUCWT72R	3-door undercounter refrigerators with worktop, 72", R600a refrigerant gas, 33/+41°F, stainless steel	71,5"x39,4"x29,9"	379 lb



KCHBC36



KCHBC50



KCHBC65



KCHBC95

## Horizontal Bottle Coolers

PNC	model	description	unit WxHxD	shipping weight
<b>738294</b>	KCHBC36	1-door bottle cooler with slide top, 36", R600a refrigerant gas, +33/+41°C, black	36,8"x35"x27"	212 lb
<b>738267</b>	KCHBC50	2-door bottle cooler with slide top, 50", R600a refrigerant gas, +33/+41°C, black	49,4"x35"x27"	298 lb
<b>738268</b>	KCHBC65	2-door bottle cooler with slide top, 65", R600a refrigerant gas, +33/+41°C, black	64,3"x35"x27"	331 lb
<b>738293</b>	KCHBC95	3-door bottle cooler with slide top, 95", R600a refrigerant gas, +33/+41°C, black	95,3"x35"x27"	439 lb

\* = Special Order

# Refrigerators



KCHMC34



KCHMC49



KCHMC58

## Milk Coolers

PNC	model	description	unit WxHxD	shipping weight
<b>738275</b>	KCHMC34	1-door school milk crate cooler, 34", R290 refrigerant gas, +33/+41°C	34"x42"x30,6"	225 lb
<b>738276</b>	KCHMC49	1-door school milk crate cooler, 48", R290 refrigerant gas, +33/+41°C	49"x42"x30,6"	277 lb
<b>738277</b>	KCHMC58	1-door school milk crate cooler, 60", R290 refrigerant gas, +33/+41°C	58,1"x42"x30,6"	300 lb



KCHBB48S



KCHBB60S



KCHBB72S



KCHBB48G

## Back Bar Refrigerators

PNC	model	description	unit WxHxD	shipping weight
<b>738269</b>	KCHBB48S	2-door back bar refrigerator with black solid door, 48", R290 refrigerant gas, +33/+41°C	49,1"x36,3"x24,4"	265 lb
<b>738270</b>	KCHBB60S	2-door back bar refrigerator with black solid door, 60", R290 refrigerant gas, +33/+41°C	61,1"x36,3"x24,4"	309 lb
<b>738271</b>	KCHBB72S	3-door back bar refrigerator with black solid door, 72", R290 refrigerant gas, +33/+41°C	73,1"x36,3"x24,4"	346 lb
<b>738272</b>	KCHBB48G	2-door back bar refrigerator with glass door, 48", R290 refrigerant gas, +33/+41°C	49,1"x36,3"x24,4"	306 lb



# Refrigerators



KCHBB60G



KCHBB72G



KCHBB48SS



KCHBB60SS



KCHBB72SS

## Back Bar Refrigerators

PNC	model	description	unit WxHxD	shipping weight
<b>738273</b>	KCHBB60G	2-door back bar refrigerator with glass door, 60", R290 refrigerant gas, +33/+41°C	61,1"x36,3"x24,4"	317 lb
<b>738274</b>	KCHBB72G	3-door back bar refrigerator with glass door, 72", R290 refrigerant gas, +33/+41°C	73,1"x36,3"x24,4"	417 lb
<b>738305</b>	*KCHBB48SS	2-door back bar refrigerator with stainless steel solid door, 48", R290 refrigerant gas, +33/+41°C	49,1"x36,3"x24,4"	273 lb
<b>738306</b>	*KCHBB60SS	2-door back bar refrigerator with stainless steel solid door, 60", R290 refrigerant gas, +33/+41°C	61,1"x36,3"x24,4"	320 lb
<b>738307</b>	*KCHBB72SS	3-door back bar refrigerator with stainless steel solid door, 72", R290 refrigerant gas, +33/+41°C	73,1"x36,3"x24,4"	359 lb



KCHBBD1D1T



KCHBBD2D1T



KCHBBD2D2T



KCHBBD3D2T

## Back Bar Refrigerators

PNC	model	description	unit WxHxD	shipping weight
<b>738295</b>	KCHBBD1D1T	1-door back bar beer dispenser refrigerator with 1 beer columns, black solid door, 25", R290 refrigerant gas, +33/+41°C	24"x29,9"x33,9"	165 lb
<b>738296</b>	KCHBBD2D1T	2-door back bar beer dispenser refrigerator with 1 beer columns, black solid door, 48", R290 refrigerant gas, +33/+41°C	49"x24,5"x36,3"	282 lb
<b>738297</b>	KCHBBD2D2T	2-door back bar beer dispenser refrigerator with 2 beer columns, black solid door, 42", R290 refrigerant gas, +33/+41°C	49"x24,5"x36,3"	287 lb
<b>738298</b>	KCHBBD3D2T	3-door back bar beer dispenser refrigerator with 2 beer columns, black solid door, 72", R290 refrigerant gas, +33/+41°C	73"x24,5"x36,3"	392 lb

\* = Special Order

# Refrigerators



KCHCB48R



KCHCB60R



KCHCB72R

## Chef Bases

PNC	model	description	unit WxHxD	shipping weight
<b>738313</b>	KCHCB48R	2-drawer chef refrigerated base, 48", R290 refrigerant gas, +33/+41°C, stainless steel	50"x31,9"x26"	260 lb
<b>738311</b>	KCHCB60R	2-drawer chef refrigerated base, 60", R290 refrigerant gas, +33/+41°C, stainless steel	62"x31,9"x26"	322 lb
<b>738312</b>	KCHCB72R	4-drawer chef refrigerated base, 72", R290 refrigerant gas, +33/+41°C, stainless steel	74"x31,9"x26"	362 lb

# Refrigerators



KCHST27.8



KCHST48.12



KCHST60.16



KCHST70.18

## Sandwich/Salad Preparation Tables

PNC	model	description	unit WxHxD	shipping weight
<b>738255</b>	KCHST27.8	1-door sandwich/salad preparation table for 6 GN 1/6+2 GN 1/9 containers, 27", R290 refrigerant gas, +33/+41°F, stainless steel	28,9"x43,3"x29,9"	236 lb
<b>738256</b>	KCHST48.12	2-door sandwich/salad preparation table for 12 GN 1/6 containers, 48", R290 refrigerant gas, +33/+41°F, stainless steel	48,3"x43,3"x29,9"	335 lb
<b>738257</b>	KCHST60.16	2-door sandwich/salad preparation table for 16 GN 1/6 containers, 60", R290 refrigerant gas, +33/+41°F, stainless steel	61,3"x43,3"x29,9"	320 lb
<b>738258</b>	KCHST70.18	3-door sandwich/salad preparation table for 18 GN 1/6 containers, 70", R290 refrigerant gas, +33/+41°F, stainless steel	71,7"x43,3"x29,9"	419 lb



KCHMT29.12



KCHMT48.18



KCHMT60.24



KCHMT70.30

## Mega Top Tables

PNC	model	description	unit WxHxD	shipping weight
<b>738259</b>	KCHMT29.12	1-door mega top preparation table for 9 GN 1/6+3 GN 1/9 containers, 29", R290 refrigerant gas, +33/+41°F, stainless steel	28,9"x43,3"x31,9"	231 lb
<b>738260</b>	KCHMT48.18	2-door mega top preparation table for 18 GN 1/6 containers, 48", R290 refrigerant gas, +33/+41°F, stainless steel	48,3"x43,3"x31,9"	320 lb
<b>738261</b>	KCHMT60.24	2-door mega top preparation table for 24 GN 1/6 containers, 60", R290 refrigerant gas, +33/+41°F, stainless steel	61,3"x43,3"x31,9"	364 lb
<b>738262</b>	KCHMT70.30	3-door mega top preparation table for 30 GN 1/6 containers, 70", R290 refrigerant gas, +33/+41°F, stainless steel	71,7"x43,3"x31,9"	408 lb

\* = Special Order



# Refrigerators



KCHMT29.12.2D



KCHMT48.18.2D



KCHMT60.24.2D

## Mega Top Tables

PNC	model	description	unit WxHxD	shipping weight
<b>738286</b>	*KCHMT29.12.2D	2-drawer mega top preparation table for 9 GN 1/6+3 GN 1/9 containers, 29", R290 refrigerant gas, +33/+41°F, stainless steel	28,9"x43,3"x31,9"	231 lb
<b>738287</b>	*KCHMT48.18.2D	4 drawer mega top preparation table for 18 GN 1/6 containers, 48", R290 refrigerant gas, +33/+41°F, stainless steel	48,3"x43,3"x31,9"	320 lb
<b>738288</b>	*KCHMT60.24.2D	4 drawer mega top preparation table for 24 GN 1/6 containers, 60", R290 refrigerant gas, +33/+41°F, stainless steel	61,3"x43,3"x31,9"	364 lb



KCHPT50.6



KCHPT72.9



KCHPT92.12

## Pizza Preparation Tables

PNC	model	description	unit WxHxD	shipping weight
<b>738252</b>	KCHPT50.6	1-door pizza preparation table, 50", R290 refrigerant gas, +33/+41°F, stainless steel	47,4"x41,3"x32,3"	311 lb
<b>738253</b>	KCHPT72.9	2-door pizza preparation table, 72", R290 refrigerant gas, +33/+41°F, stainless steel	70,8"x41,3"x32,3"	434 lb
<b>738254</b>	KCHPT92.12	3-door pizza preparation table, 92", R290 refrigerant gas, +33/+41°F, stainless steel	94,2"x41,3"x32,3"	564 lb

# THE FREEZERS



# Freezers



KCBM180FQY



KCHRI27R1DFE



KCHRI27R2HDF



KCHRI54R2DFE



KCHRI81R3DF

## Upright Reach in Freezers

PNC	model	description	unit WxHxD	shipping weight
<b>738080</b>	KCBM180FQY	18 cu ft. Single Door reach in freezer, Back Room Application	32"x31"x76"	275 lb
<b>738244</b>	KCHRI27R1DFE	1-door reach-in freezer, stainless steel, 23 cubic feet, R290 refrigerant gas, -9°F - Energy Star	26,8"x82,3"x32,7"	326 lb
<b>738285</b>	*KCHRI27R2HDF	2-half door reach-in freezer, stainless steel, 23 cubic feet, R290 refrigerant gas, -9°F	26,8"x82,3"x31,9"	337 lb
<b>738245</b>	KCHRI54R2DFE	2-door reach-in freezer, stainless steel, 49 cubic feet, R290 refrigerant gas, -9°F - Energy Star	53,9"x82,3"x32,7"	498 lb
<b>738246</b>	KCHRI81R3DF	3-door reach-in freezer, stainless steel, 72 cubic feet, R290 refrigerant gas, -9°F	81"x82,3"x32,7"	776 lb



KCHGM26F



KCHGM48F



KCHGM72F

## Merchandiser Reach in Freezers

PNC	model	description	unit WxHxD	shipping weight
<b>738250</b>	KCHGM26F	1-glass door merchandiser freezer, black, 26 cubic feet, R290 refrigerant gas, -9°F	28,3"x79,5"x33,9"	353 lb
<b>738309</b>	KCHGM48F	2-glass door merchandiser freezer, black, 48 cubic feet, R290 refrigerant gas, -9°F	54"x79,5"x31,9"	564 lb
<b>738310</b>	KCHGM72F	3-glass door merchandiser freezer, black, 72 cubic feet, R404a refrigerant gas, -9°F	81"x79,5"x31,9"	820 lb

\* = Special Order



# Freezers



KCHUC27F



KCHUC48F

## Undercounter Freezers

PNC	model	description	unit WxHxD	shipping weight
<b>738265</b>	KCHUC27F	1-door undercounter freezer, 27", R290 refrigerant gas, -9°F, stainless steel	32"x31"x76"	194 lb
<b>738266</b>	KCHUC48F	2-door undercounter freezer, 48", R290 refrigerant gas, -9°F, stainless steel	48,2"x35,5"x29,9"	287 lb



KCHUCWT27F



KCHUCWT48F

## Undercounter Freezers with worktop

PNC	model	description	unit WxHxD	shipping weight
<b>738303</b>	*KCHUCWT27F	1-door undercounter freezer with worktop, 27", R290 refrigerant gas, -9°F, stainless steel	27,8"x39,4"x29,9"	198 lb
<b>738304</b>	*KCHUCWT48F	2-door undercounter freezer with worktop, 48", R290 refrigerant gas, -9°F, stainless steel	48,2"x39,4"x29,9"	293 lb

\* = Special Order

# Freezers



KCCF073WS



KCCF140WH



KCCF170WH



KCCF210WH

## Chest Freezers Solid Lid

PNC	model	description	unit WxHxD	shipping weight
<b>738089</b>	KCCF073WS	7 cu. ft. Solid Lid Chest Freezer, 1 Wire Basket. 1 year parts & labor / 5 year compressor warranty.	38"x22"x33"	101 lb
<b>738230</b>	KCCF140WH	14 cu. ft. Solid Lid Chest Freezer, 1 Wire Basket. 1 year parts & labor / 5 year compressor warranty.	51.75"x29.3"x36"	187 lb
<b>738231</b>	KCCF170WH	17 cu. ft. Solid Lid Chest Freezer, 1 Wire Basket. 1 year parts & labor / 5 year compressor warranty.	59.5"x29.3"x36.5"	205 lb
<b>738232</b>	KCCF210WH	21 cu. ft. Solid Lid Chest Freezer, 1 Wire Basket. 1 year parts & labor / 5 year compressor warranty.	71"x29.3"x36"	240 lb



KCNF073WS



KCNF140WH



KCNF170WH

## Chest Freezers Glass Lid

PNC	model	description	unit WxHxD	shipping weight
<b>738090</b>	KCNF073WS	7 cu. ft. Glass Lid Chest Freezer, 1 Wire Basket. 1 year parts & labor / 5 year compressor warranty.	38"x20.75"x33"	115 lb
<b>738233</b>	KCNF140WH	14 cu. ft. Glass Lid Chest Freezer, 1 Wire Basket. 1 year parts & labor / 5 year compressor warranty.	59.5"x27.3"x35"	194 lb
<b>738234</b>	KCNF170WH	18 cu. ft. Glass Lid Chest Freezer, 1 Wire Basket. 1 year parts & labor / 5 year compressor warranty.	71"x27.3"x35"	243 lb



MODEL	DESCRIPTION
<b>MILK DISPENSERS</b>	
SKMAJ1-ESUS4	Milk Dispenser 1 valve, with crate
SKMA2-ESUS4	Milk Dispenser 2 valve, with crates
SKMAJ3-ESUS4	Milk Dispenser 3 valve, with crates
<b>DISPLAY CASE</b>	
SKRM48-EGUS1	Display Case Mirrored Back
<b>ICE CREAM UNITS</b>	
SKRNB27-ESUS2	Fountainette W/O Pumps & Jars
SKEFT15-ELUS1	Ice Cream Freezer Two Facing
<b>LETTUCE</b>	
SKDL25-ESUS2	Lettuce Crisper/Dispenser
<b>PREP TABLES</b>	
SKPS8A-ELUS1	Silver King Counter Top Prep Table - Pan Rail (8) 1/6 pan capacity
SKPS12A-ELUS1	Silver King Counter Top Prep Table - Pan Rail (12) 1/6 pan capacity
<b>UNDERCOUNTER REFRIGERATORS</b>	
SKER48-SD-1-BK1	48" Undercounter Refrigerator
SKR27A/C10	27" Undercounter Refrigerator

Contact SESCO for Silver King solutions Including:  
 Chef Base Solutions, Dairy Dispensers, Undercounters, Drop In Freezers,  
 Mobile Freezers, Prep Tables, and Shelf Refrigerators



MODEL	DESCRIPTION
<b>TOASTING</b>	
297-T20	Toaster Slim Line Bun-120V
<b>TIMERS</b>	
740-T2	Timer Single Func on 2 Ch
740-T4	Timer Single Func on 4 Ch
740-T8	Timer Single Func on 8 Ch
740-T12	Timer Single Func on 12 Ch
<b>HOLDING</b>	
DHB-P1A	Dedicated Holding Bin, Countertop
541-723E4S	Kit, Pan Cover (Pkg Of 4)
<b>MODULAR HOLDING</b>	
MHB100MB-NA	Main Base, Modular, 115VAC
MHB100HM1-SS	Single Sided Holding Module 120V
MHB100EB	Expansion Base, Modular
MHB100HM1	Holding Module, 110V
<b>SABER KING</b>	
980-000-00	Saber King Chassis
980-000-10A	Saber King Tomato Blade Pusher Set 3/16 Inch
980-000-20A	Saber King Onion Blade Pusher Set 3/16 Inch
980-000-33A	Saber King Lettuce Blade Pusher Set 1 x 2 Inch
<b>TOMATO SABER</b>	
943-A	Tomato Saber, 3/16in (Std Line)
<b>BAGEL SABER</b>	
970-A	Bagel Saber
<b>CITRUS SABER</b>	
CW-6	Citrus Saber -Yellow (8 Sec on)
<b>DISPENSING</b>	
136-1	Dispenser Bottles (Case of 9)
580-NMCC	Sauce Dispenser 1/3 Oz Red
581-NMCC	Sauce Dispenser White 1/2 Oz
582-NMCC	Sauce Dispenser Black 2/3 Oz
583-NMCC	Sauce Dispenser Green 1 Oz





## DISHWASHERS by ELECTROLUX



No Hot Water Line Required  
No Pressure Boost Required

### Undercounter Dishwashers

Description	Model
Undercounter Dishwasher and Glasswasher, Atmospheric boiler, Energy Star 2.0, 30 racks/hour - 208V/1N/60Hz  6.85 ElekW 208 V 1 60 Hz WxDxH 23 5/8"x 26 1/16"x 32 1/4" in lb 165 ft³ 17.68	VLAI1G8
Undercounter Dishwasher and Glasswasher, Atmospheric boiler, Energy Star 2.0, 30 racks/hour - 240V/1N/60Hz  6.85 ElekW 240 V 1 60 Hz WxDxH 23 5/8"x 26 1/16"x 32 1/4" in lb 174 ft³ 17.68	VLAI1G4



### Hood Type Dishwashers

Description	Model
Hood type insulated dishwasher with double skin hood, detergent and rinse aid dispenser, 63 racks/h, 208V/ 1ph/ 60Hz  9.90 ElekW 208 V 1 60 Hz WxDxH 29 5/8"x 29 3/4"x 61 11/16" in lb 304 ft³ 43.27	VDH63-1
Hood type insulated dishwasher with double skin hood, detergent and rinse aid dispenser, 63 racks/h, 208V/ 3ph/ 60Hz  12.90 ElekW 208 V 3 60 Hz WxDxH 29 5/8"x 29 3/4"x 61 11/16" in lb 311 ft³ 43.27	VDH63



Ask SESCO today about Veetsan  
The best value in dishwashing!



401



522

Soft Serve/ Yogurt Machines *		
401	208V/60/1	five 4 oz servings per minute, 20 qt capacity
407	115V/60/1	two 4 oz servings per minute, 7 qt capacity
DF200	115V/60/1	two 3 oz servings per minute, 7 qt capacity

Twist Soft Serve/ Yogurt Machines *		
501	208V/60/1	four 4 oz servings per minute per side 11 qt capacity per side - <b>Countertop model</b>
522	208V/60/1*	seven 4 oz servings per minute per side 17 qt capacity per side - <b>Floor model</b>
* Two separate circuits required.		



Frozen Beverage Machines *		
704	208V/60/1	28 gallons per hour, 35 qt capacity
707	115V/60/1	8 gallons per hour, 20 qt capacity



704



608S



Smoothie Machine *		
608S	115V/60/1	three 12 oz servings per minute, 20 qt capacity

Flurry/ Shake Mixture		
Cyclone	115V	High Speed Compact Mixer



Made in USA



ACCUFREEZE™  
TECHNOLOGY



**SECO** SELECT

TEST OUR METAL™

SH14UA

- Fully insulated
- Patented Armor heating for quality food holding
- Holds 18" X 26" or 14" x 18 Trays & 12" x 20" Pans



Road Warrior



Contact SESCO for SECO Select solutions  
including Custom Serving Lines, Breakfast Carts, and much more...



**A NEW GENERATION IN STEAMING!**



## Boilerless 6 pan and 12 pan

### Steam Generator



### Quick Change Steam Generator 10 and 6 Pan Cabinets

Generators can be  
be changed in minutes

- \* #1 Rated Commercial Steamer  
in Speed and Efficiency
- \* Energy Star Approved
- \* Highest Production  
Fastest Recovery in the Industry



Boilerless-12 Pan



**Blue Flame**

Product of the Year Award Winner



**For more information  
Contact SESCO today**



**flexeserve™**  
The Home of Hot-holding

**Transforming operations  
Contact SESCO to unlock...**



Amazing food quality



Extend shelf Life



Diverse food range



Reduce food waste



Unmatched efficiency



Happier customers!



**Offer more food variety at  
unbelievable quality**



**Manage back-of-house  
operations with ease**



**Meet the  
game-changers**





**QuickShip**

32 sizes of walk-Ins  
in 48 hours



Restaurant Coolers

Bakery & Pizza

Brewery - Walk ins

Beer Caves

Warehouse Solutions

Schools / Universities

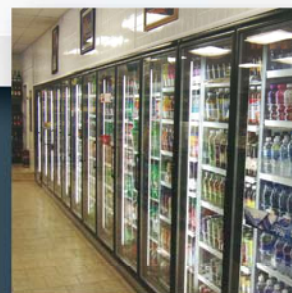
Restaurant Coolers

Supermarket

Convenience Stores

Labs - Medical Holding

**Premium Walk-Ins**  
In all Sizes



All custom sizes available.

**Voted # 1**  
**By Installers For**  
**Ease Of Installation**

## G-2 QuickShip

- 32 sizes of quick ship walk-ins available to ship within 2 days.
- High quality, heavy duty foamed in place construction that meets all new Dept of Energy guidelines
- Heavy duty welded 12 gauge steel door for strength and rigidity
- G-10 QuickShip

More Choices...ask how  
Leer Quick Ship is the most flexible in the Industry.

Add other options such as floor, ramps, membrane roof,  
self contained drop-in refrigeration - for most units.  
The box still ships quick - in only 10 days!



**Call For Your Quote Today**





# RF Hunter™

pure oil filtration

Model	Description
ECCO ONE P	Filter Machine Up To 65 Lbs Oil Capacity
HF80P	Filter Machine Up To 80 Lbs Oil Capacity
HF130P	Filter Machine Up To 130 Lbs Oil Capacity
<b>Filter Paper</b>	
FE02	Filter Envelopes 14 X 15.5
FE09	Filter Envelopes 17.5 X 18.5
<b>Filter Powder</b>	
FP22	Filter Powder Bulk 22 lb. Box
FP22C	Filter Powder Packets 3.2 oz
FP40100	Fryer Boil-Out Puck 4 oz Tablet



HF SERIES



ECCO ONE P



RM1424

Model	Description
<b>Pancake Griddles (Low Grease)</b>	
RM1220-8	12"X20" 10 ga 2-burner indoor/outdoor
RM1423-8	14"X23" 7 ga 2-burner rest./outdoor
RM1424	14"X24" 7 ga 2-burner restaurant
RM2323-8	23"X23" 7 ga 4-burner restaurant
RM2424	24"X24" 7 ga 4-burner restaurant
<b>Add-On Griddles (High Grease)</b>	
MC12-8	12"X24"X1.5" deep 7 ga
	2-burner commercial griddle w/ grease tray
MC24-8	24"X24"X1.5" deep 7 ga
	4-burner commercial griddle w/ grease tray
<b>Add-On Broilers</b>	
MB12-8	2-burner commercial w/ grease tray
MB24-8	4-burner commercial w/ grease tray



MC12



MB12

# Global Refrigeration, Inc.



**MADE  
IN THE  
USA**

High Quality Ice Cream Cases  
and Hardening Cabinets

Contact SESCO today for information  
on Global Refrigeration Products



# Modular<sup>®</sup>

## Foodservice Dispensers



### Simpli-Flex Cup

1015023  
SF2000 Cup Dispenser  
23"x5"

### Simpli-Flex Cone

1003846  
SF1002 (1905842 gasket)  
Cone Dispenser 24"x 4"  
  
1003848  
SF1002P w/ plastic tube  
(1905842 gasket)  
Cone Dispenser 31"x 4"  
  
1003850  
SF1002P w/ plastic tube  
(1905842 gasket)  
Cone Dispenser 19"x 31.13"  
  
1007710  
SF1002P w/ plastic tube  
(1905842 gasket)  
Cone Dispenser 31"x3.13"



### Z-STAND 1008-30Z

1003865  
for 3 cup/lid disp



### Napkin

In-Counter Dispenser  
1003971  
6 1/2"D x 10 1/2"H x 8 1/4"W



### Simpli-Flex Cup Dispenser

In-Counter / Cabinet Mount  
1007699  
CSF1003 for extra small / portion cups  
24"L x 3" Dia

1015201  
CSF1005 for large cups  
24"L x 5" Dia



### Simpli-Flex Cup Dispenser

Wall / Stand Mount  
1007516  
SF1003 for extra small / portion cups  
16"L x 3 1/8" Dia



### Countertop Adjustable Lid Dispenser

1004056  
19" Wide 4 dividers





USA & GLOBAL  
MANUFACTURING

75  
YEARS of INNOVATION

**Innovation. Experience. Quality.**

Contact SESCO for information on  
Winholt products and stainless  
steel fabrication

Contact SESCO for Details  
800.222.0558  
[www.sesco.biz](http://www.sesco.biz)

Foodservice Products Group, Inc.

# Alegacy®



Contact SESCO for more details...  
and many more smallware solutions!





arc  
cardinal

Buffetware



Abert Flatware



Maria Portugal Terracota Collection

Grace Collection



Evo Azure Collection



Tempo Lamps



Stack Up Cross Collection



Exaltation Collection



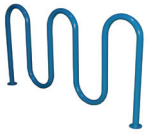
Dudson Harvest Mediterranean  
Moresque







**WABASH VALLEY**



ALWAYS there for you