



**SOFT RAIL WALK-INS**



**Trusted Partner in  
Temperature-Controlled  
Storage Solutions**





## ABOUT LEER

## INDUSTRIES WE SERVE

Through decades of commitment to product development, customer service and a relentless focus on American-made manufacturing excellence, Leer has continued to shape and drive innovation in the temperature-controlled storage industry. We're dedicated to the success of all our customers - be that customers of our iconic white Ice Merchandisers, Ice Vending Machines, Refrigerated Transports, Reach-In Storage Freezers, or our custom-built Walk-In Coolers & Freezers.

We'd be honored to earn your business and become your trusted partner in temperature-controlled storage solutions. When you buy from Leer, you're not just buying our products but a commitment from all of us and that's a promise to be with you every degree of the way. We're confident our products provide a value that cannot be beaten.

### OUR MISSION

- To be your trusted partner in temperature-controlled storage solutions.
- To partner with our customers to design and develop the highest quality, innovative, temperature-controlled storage solutions to meet their ever-changing needs.
- To provide our customers exceptional quality and outstanding customer service at every stage of every interaction.
- To train and support all employee owners to produce products they can proudly label Made-In-The-USA.
- To promote safe and healthy work practices and environments that benefit all.

### OUR VISION

We will exceed the highest expectations of our customers, employee owners, partners, shareholders and community by continually delivering the best possible American-made products. We're with you every *degree* of the way.

### WE VALUE

- Building Trust
- Wowing Customers
- Constantly Improving
- Working Together
- Embracing Ownership

### WHEN YOU BUY FROM LEER

- You have our lifetime support - we're with you every degree of the way.
- We're dedicated to delivering our products right the first time, right every time.
- Our products are intelligent-by-design because we know every degree matters.
- We're 100% employee owned - those employee owners make a distinctive difference because you have the commitment of not just one owner, but hundreds of owners.
- We have decades of commitment to product development and customer service with a relentless focus on manufacturing quality from America's heartland.

### WE BELIEVE

- All stakeholders are valuable partners in delivering our vision and executing our mission, and are invested in doing both.
- In best intentions at all times, and taking a commonsense and practical path to address differences.

### OUR FAMILY

We're a proud member of Dexter Apache Holdings, Inc. ([dexterapache.com](http://dexterapache.com)), a leading 100% employee-owned company with diverse business interests in the manufacturing, distribution, financial services and mission critical technology industries.

#### FOODSERVICE

RESTAURANTS / BARS  
SCHOOLS

#### HEALTHCARE

FOODSERVICE  
MORTUARIES  
PHARMACEUTICAL / LABS

#### INDUSTRIAL

FOOD PROCESSING FACILITIES  
SHELTERS

#### PACKAGED ICE

ICE MANUFACTURERS  
RETAIL

#### RETAIL

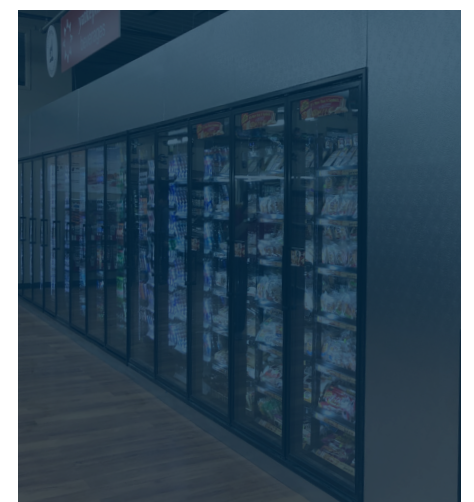
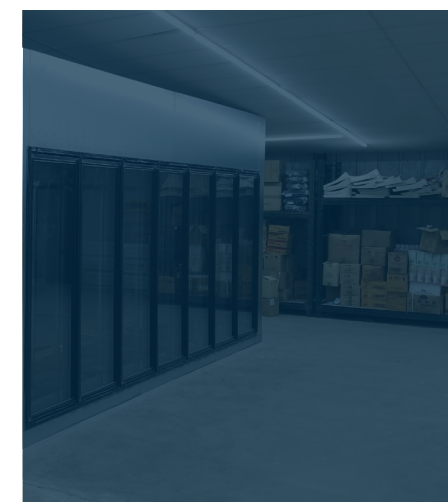
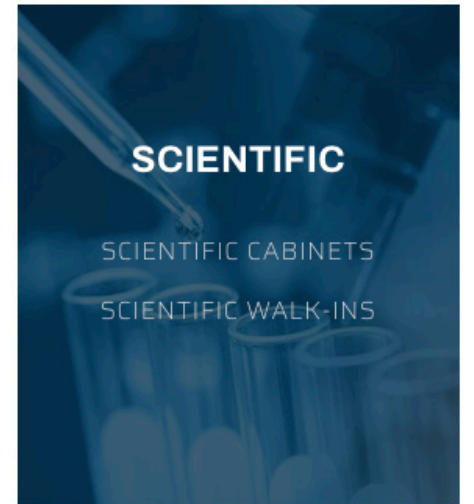
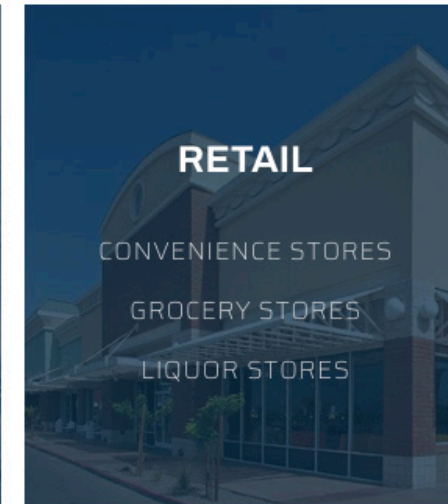
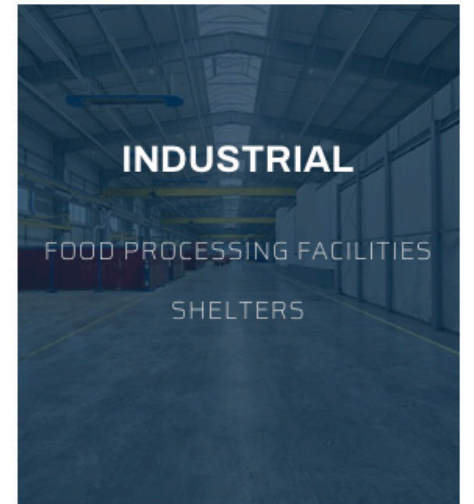
CONVENIENCE STORES  
GROCERY STORES  
LIQUOR STORES

#### SCIENTIFIC

SCIENTIFIC CABINETS  
SCIENTIFIC WALK-INS

#### SPECIALTY

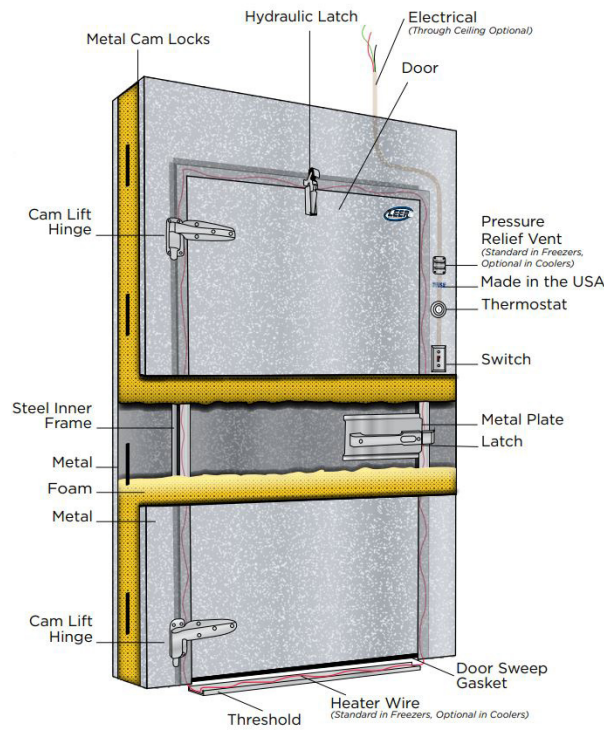
BREWERIES / WINERIES  
CAMPGROUNDS / RV PARKS  
MARINAS / PARKS / BEACHES  
/ DOCKS  
RENTALS / EVENTS / FAIRS





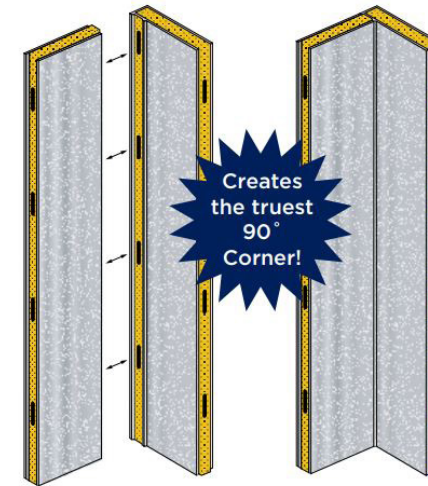
## SOFT RAIL PANEL FEATURES

## SOFT RAIL PANEL FEATURES



### REINFORCED WALK-IN ENTRY / SERVICE DOOR

As an industry leader, Leer's Soft Rail Walk-In entry doors are constructed with a 12-gauge steel inner frame in the door jamb. Along with the steel frame, we foam in place steel plates in the door plug. This enables us to mount the hinges, latch and hydraulic door closer from steel to steel mounting points. This provides you with the most durable and reliable door available. While there may be lower cost alternatives in the market, those doors may prematurely sag and fail. As a door sags, warm moist air begins to infiltrate the box resulting in increased refrigeration cycles and energy consumption and in freezers excessive ice build-up. It is common for other doors to need replacement within 5 to 7 years due to sag. We believe Leer doors will provide far superior performance and will stand the test of time and provide a long-lasting seal.



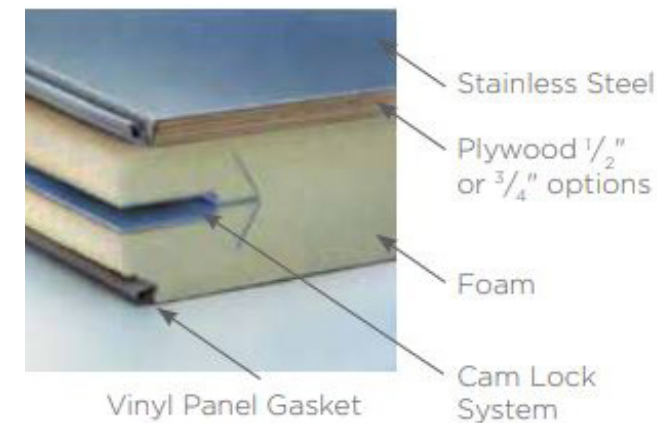
### TWO-PIECE, TRUEST 90° CORNER

A two-piece Walk-In corner allows the corner panels to be foamed and shipped as flat panels. This helps ensure the Walk-In is square by decreasing the likelihood of the corner warping or distorting during manufacturing and shipping. With a two-piece corner, the panels are cammed together in the field creating the truest 90° corner. The truer the corner, the better the Walk-In assembles during installation. Two piece, 90° corners, also result in easier installation, less stress on the joints, reduced potential of air and moisture intrusion and longer lasting durability.



### INDUSTRY LEADING WALK-IN PANEL THICKNESS

Leer's standard Soft Rail Walk-In panels are constructed with an industry leading 4 1/4 inches of insulation - with 5 inches of insulation for applications below -10 degrees Fahrenheit. Our panels are thicker than most and meet or exceed all Department of Energy R-Value requirements. R-Value measures how effective the insulation is at resisting heat transfer through the panel. The higher the R-Value, the more insulative the panels are. Exceeding this requirement demonstrates our panels' ability to hold a stable temperature and therefore protect the product you're storing. A more stable environment also means less refrigeration cycle times and reduced energy costs for years to come.



### REINFORCED 16-GAUGE STAINLESS STEEL FLOOR

The standard floor finish for Leer Soft Rail Walk-Ins is 16-Gauge Stainless Steel. The weight load capacity is 800lbs per ft² for the standard floor and 1500lbs per ft² for the optional Super Floor. The standard floors contain the 16-gauge stainless steel finish, cfc-free foamed-in-place polyurethane, and vinyl panel gaskets on both edges. The optional Super Floor contains the standard features plus plywood reinforcement measuring either 1/2" or 3/4".



### VIDEO LIBRARY LEERINC.COM/VIDEO-LIBRARY

For a full overview and breakdown of Leer's Soft Rail-Walk-In construction, features and benefits, please visit our complete Video Library.



# GENERAL PRODUCT SPECIFICATIONS

# QUICK SHIP PROGRAM

## PANEL CONSTRUCTION

Standard panels are formed by two shaped metal skins, separated by and bonded to foamed-in-place urethane to form rigid structural panels. Panels have urethane foam-formed tongue-and-groove edges with foamed-in-place, flexible, vinyl gaskets to assure vapor-tight panel joints. Floor sections will withstand uniformly distributed floor loads up to 700 pounds per square foot. Partition walls separating compartments are of the same construction as perimeter wall panels and cam-lock into wall, ceiling and/or floor panels. (Maximum single panel length for walls and ceiling is 14' 5½", floor panel max is 11' 7".)

## INSULATION

Class 1, rigid, foamed-in-place, non-CFC urethane with a minimum density of 2.2 pounds per cubic foot. Our panels exceed all minimum requirements of the DOE for K-Factor and R-Values, and have passed the ASTM E-84 test for surface burn characteristics. Standard cooler and freezer panels are 4.25", with 5" panels used for applications below -10°F.

## PANEL FINISH

Exterior and interior surfaces of standard ceiling and sidewall panels are 26-gauge, acrylic coated, embossed galvanized steel. Floor is 16-gauge stainless steel interior.

## VINYL SCREED

A coved vinyl screed is provided when no insulated floor panel is required. The screed is fastened to existing floor by ram set or lag anchor (customer furnished) for retaining wall panels to floor.

## CAM-ACTION LOCKING FASTENERS/SECTION GASKETING

All panel tongue-and-groove edges have steel offset cam fasteners located for maximum locking efficiency. A hex wrench is provided to lock the fasteners within access holes. Press-fit cap plugs are furnished to cover access holes and match panel finish. NSF listed vinyl gaskets are foamed-in-place on the tongue side of each panel on interior and exterior surfaces. Gaskets are impervious to grease, oils, mildew, stains, etc.

## ENTRANCE DOOR

Standard doors are 36" x 78" flush mounted, infitting, with exterior and interior finish to match panel walls. Each door is insulated with foamed-in-place urethane to an overall thickness of 4.25". Side and top are fitted with thermoplastic, bellows-type gasket with magnetic core. Bottom seal is an adjustable, double-blade rubber sweep gasket. Door threshold is 16-gauge stainless steel. (Only on freezer or floored cooler.)

## HARDWARE

Standard doors are mounted with heavy-duty, spring-loaded, cam-lift hinges. Each door has a lockable, heavy-duty latch and strike assembly, antimicrobial finish, an inside release handle and a hydraulic door closer.

## THERMOMETER

Each door panel has a 2" dial thermometer with a temperature range of -40°F to 65°F (-40°C to 20°C)

## LIGHTING

Each door panel is furnished with a vaporproof light fixture, Lexan globe, lighted toggle switch and stainless steel switch cover. (Bulb not included)

## ANTI-CONDENSATE HEAT WIRES

The freezer door frame is fitted with a replaceable 115V aluminum braided heat wire.

## PRESSURE-RELIEF VENT

A heated pressure-relief vent is furnished for freezer applications.

## ELECTRICAL

All wiring for heat wire, pressure-relief vent, light and switch requires field connection to 115/1/60. Single point connection.

## INSTALLATION INSTRUCTIONS

A complete set of instructions and an assembly drawing are included with each order to aid with installation.

## QUICK SHIP (2-DAYS)

## GET IT FAST WITHOUT COMPROMISING QUALITY!

Soft Rail	Cooler	Freezer																																																																																										
<b>Units Available</b>	Indoor units available. Available with Soft Rail Walk-In Cooler standard features and specifications.	Indoor units available. Available with all Soft Rail Walk-In Freezer standard features and specifications.																																																																																										
<b>Additional Options Available:</b>	<ul style="list-style-type: none"> <li>Standard, Pre-Assembled Remote Refrigeration</li> <li>4ft LED Lights</li> </ul>	<ul style="list-style-type: none"> <li>Standard, Pre-Assembled Remote Refrigeration</li> <li>4ft LED Lights</li> </ul>																																																																																										
<b>Available Sizes:</b>	<table border="1"> <tr><td></td><td>5'10"</td><td>7'9"</td><td>9'8"</td><td>11'7"</td><td>13'6"</td><td>15'5"</td><td>17'4"</td><td>19'3"</td></tr> <tr><td>5'10"</td><td>■</td><td>■</td><td>■</td><td>■</td><td>■</td><td>■</td><td>■</td><td>■</td></tr> <tr><td>7'9"</td><td>■</td><td>■</td><td>■</td><td>■</td><td>■</td><td>■</td><td>■</td><td>■</td></tr> <tr><td>9'8"</td><td>■</td><td>■</td><td>■</td><td>■</td><td>■</td><td>■</td><td>■</td><td>■</td></tr> <tr><td>11'7"</td><td>■</td><td>■</td><td>■</td><td>■</td><td>■</td><td>■</td><td>■</td><td>■</td></tr> </table>		5'10"	7'9"	9'8"	11'7"	13'6"	15'5"	17'4"	19'3"	5'10"	■	■	■	■	■	■	■	■	7'9"	■	■	■	■	■	■	■	■	9'8"	■	■	■	■	■	■	■	■	11'7"	■	■	■	■	■	■	■	■	<table border="1"> <tr><td></td><td>5'10"</td><td>7'9"</td><td>9'8"</td><td>11'7"</td><td>13'6"</td><td>15'5"</td><td>17'4"</td><td>19'3"</td></tr> <tr><td>5'10"</td><td>■</td><td>■</td><td>■</td><td>■</td><td>■</td><td>■</td><td>■</td><td>■</td></tr> <tr><td>7'9"</td><td>■</td><td>■</td><td>■</td><td>■</td><td>■</td><td>■</td><td>■</td><td>■</td></tr> <tr><td>9'8"</td><td>■</td><td>■</td><td>■</td><td>■</td><td>■</td><td>■</td><td>■</td><td>■</td></tr> <tr><td>11'7"</td><td>■</td><td>■</td><td>■</td><td>■</td><td>■</td><td>■</td><td>■</td><td>■</td></tr> </table>		5'10"	7'9"	9'8"	11'7"	13'6"	15'5"	17'4"	19'3"	5'10"	■	■	■	■	■	■	■	■	7'9"	■	■	■	■	■	■	■	■	9'8"	■	■	■	■	■	■	■	■	11'7"	■	■	■	■	■	■	■	■
	5'10"	7'9"	9'8"	11'7"	13'6"	15'5"	17'4"	19'3"																																																																																				
5'10"	■	■	■	■	■	■	■	■																																																																																				
7'9"	■	■	■	■	■	■	■	■																																																																																				
9'8"	■	■	■	■	■	■	■	■																																																																																				
11'7"	■	■	■	■	■	■	■	■																																																																																				
	5'10"	7'9"	9'8"	11'7"	13'6"	15'5"	17'4"	19'3"																																																																																				
5'10"	■	■	■	■	■	■	■	■																																																																																				
7'9"	■	■	■	■	■	■	■	■																																																																																				
9'8"	■	■	■	■	■	■	■	■																																																																																				
11'7"	■	■	■	■	■	■	■	■																																																																																				
<b>Available Heights Without Floor:</b>	<ul style="list-style-type: none"> <li>7'2"</li> <li>8'2"</li> </ul>	<ul style="list-style-type: none"> <li>7'2"</li> <li>8'2"</li> </ul>																																																																																										
<b>Available Heights With Floor:</b>	N/A	N/A																																																																																										

## QUICK SHIP PLUS (10-DAYS)

Soft Rail	Cooler	Freezer																																																																																										
<b>Units Available</b>	Indoor and Outdoor units available. Available with all Soft Rail Walk-In Cooler standard features and specifications.	Indoor and Outdoor units available. Available with all Soft Rail Walk-In Freezer standard features and specifications.																																																																																										
<b>Additional Options Available:</b>	<ul style="list-style-type: none"> <li>Standard, Pre-Assembled Remote Refrigeration</li> <li>Door Strip Curtains</li> <li>Exterior Ramp(s)</li> <li>4ft LED Lights</li> <li>Drop-In Refrigeration</li> <li>Interior Ramps(s)</li> <li>Kick Plates / Diamond Tread</li> <li>Corner Trim</li> <li>Coving</li> <li>Door Drip Cap</li> <li>Membrane Roof Cap</li> </ul>	<ul style="list-style-type: none"> <li>Standard, Pre-Assembled Remote Refrigeration</li> <li>Door Strip Curtains</li> <li>Exterior Ramp(s)</li> <li>4ft LED Lights</li> <li>Drop-In Refrigeration</li> <li>Interior Ramps(s)</li> <li>Kick Plates / Diamond Tread</li> <li>Corner Trim</li> <li>Coving</li> <li>Door Drip Cap</li> <li>Membrane Roof Cap</li> </ul>																																																																																										
<b>Available Sizes:</b>	<table border="1"> <tr><td></td><td>5'10"</td><td>7'9"</td><td>9'8"</td><td>11'7"</td><td>13'6"</td><td>15'5"</td><td>17'4"</td><td>19'3"</td></tr> <tr><td>5'10"</td><td>■</td><td>■</td><td>■</td><td>■</td><td>■</td><td>■</td><td>■</td><td>■</td></tr> <tr><td>7'9"</td><td>■</td><td>■</td><td>■</td><td>■</td><td>■</td><td>■</td><td>■</td><td>■</td></tr> <tr><td>9'8"</td><td>■</td><td>■</td><td>■</td><td>■</td><td>■</td><td>■</td><td>■</td><td>■</td></tr> <tr><td>11'7"</td><td>■</td><td>■</td><td>■</td><td>■</td><td>■</td><td>■</td><td>■</td><td>■</td></tr> </table>		5'10"	7'9"	9'8"	11'7"	13'6"	15'5"	17'4"	19'3"	5'10"	■	■	■	■	■	■	■	■	7'9"	■	■	■	■	■	■	■	■	9'8"	■	■	■	■	■	■	■	■	11'7"	■	■	■	■	■	■	■	■	<table border="1"> <tr><td></td><td>5'10"</td><td>7'9"</td><td>9'8"</td><td>11'7"</td><td>13'6"</td><td>15'5"</td><td>17'4"</td><td>19'3"</td></tr> <tr><td>5'10"</td><td>■</td><td>■</td><td>■</td><td>■</td><td>■</td><td>■</td><td>■</td><td>■</td></tr> <tr><td>7'9"</td><td>■</td><td>■</td><td>■</td><td>■</td><td>■</td><td>■</td><td>■</td><td>■</td></tr> <tr><td>9'8"</td><td>■</td><td>■</td><td>■</td><td>■</td><td>■</td><td>■</td><td>■</td><td>■</td></tr> <tr><td>11'7"</td><td>■</td><td>■</td><td>■</td><td>■</td><td>■</td><td>■</td><td>■</td><td>■</td></tr> </table>		5'10"	7'9"	9'8"	11'7"	13'6"	15'5"	17'4"	19'3"	5'10"	■	■	■	■	■	■	■	■	7'9"	■	■	■	■	■	■	■	■	9'8"	■	■	■	■	■	■	■	■	11'7"	■	■	■	■	■	■	■	■
	5'10"	7'9"	9'8"	11'7"	13'6"	15'5"	17'4"	19'3"																																																																																				
5'10"	■	■	■	■	■	■	■	■																																																																																				
7'9"	■	■	■	■	■	■	■	■																																																																																				
9'8"	■	■	■	■	■	■	■	■																																																																																				
11'7"	■	■	■	■	■	■	■	■																																																																																				
	5'10"	7'9"	9'8"	11'7"	13'6"	15'5"	17'4"	19'3"																																																																																				
5'10"	■	■	■	■	■	■	■	■																																																																																				
7'9"	■	■	■	■	■	■	■	■																																																																																				
9'8"	■	■	■	■	■	■	■	■																																																																																				
11'7"	■	■	■	■	■	■	■	■																																																																																				
<b>Available Heights Without Floor:</b>	<ul style="list-style-type: none"> <li>7'2"</li> <li>8'2"</li> </ul>	<ul style="list-style-type: none"> <li>7'2"</li> <li>8'2"</li> </ul>																																																																																										
<b>Available Heights With Floor:</b>	<ul style="list-style-type: none"> <li>7'6 ¼"</li> <li>8'6 ¼"</li> </ul>	<ul style="list-style-type: none"> <li>7'6 ¼"</li> <li>8'6 ¼"</li> </ul>																																																																																										



## FLOOR PANELS

## CEILING PANELS

FLOOR	Cooler	Freezer
<b>Construction Details</b>		
<b>Tongue &amp; Groove Rail:</b>	Soft Rail	Soft Rail
<b>Adjoining Style:</b>	Cam-Action Locking Fasteners	Cam-Action Locking Fasteners
<b>Insulation:</b>	Class 1, CFC- and HFC-Free Polyurethane	Class 1, CFC- and HFC-Free Polyurethane
<b>Insulation Density (lbs per ft³):</b>	2.2	2.2
<b>Insulation Type:</b>	Foamed-In-Place	Foamed-In-Place
<b>Gasket:</b>	Foamed-In-Place	Foamed-In-Place
<b>NSF Coving:</b>	Yes	Yes
<b>Panel Dimensions</b>		
<b>Standard Thickness (Inches):</b>	4 ¼	4 ¼
<b>Maximum Length (Inches):</b>	139	139
<b>Maximum Width (Inches):</b>	46.5	46.5
<b>Weight Load Capacities</b>		
<b>Standard (lbs per ft²):</b>	800	800
<b>Custom 'Super Floor' (lbs per ft²):</b>	1500	1500
<b>Additional Underlayment/Overlayment:</b>	Yes	Yes
<b>Static vs. Live Load Capacities:</b>	Contact Leer Inc.	Contact Leer Inc.
<b>Panel Finishes</b>		
<b>Standard:</b>	16-Gauge Stainless Steel	16-Gauge Stainless Steel
<b>Custom:</b>	Upon Request	Upon Request
<b>Available Types</b>		
<b>With Floor:</b>	Yes	Yes
<b>Without Floor (Vinyl Screed):</b>	Yes	Yes
<b>Without Floor (Wood Screed):</b>	No	No
<b>Without Floor (Flat Bottom):</b>	Yes	Yes
<b>Without Floor (Z-Angle):</b>	Yes	Yes

CEILING	Cooler	Freezer
<b>CONSTRUCTION DETAILS</b>		
<b>Tongue &amp; Groove Rail:</b>	Soft Rail	Soft Rail
<b>Adjoining Style:</b>	Cam-Action Locking Fasteners	Cam-Action Locking Fasteners
<b>Insulation:</b>	Class 1, CFC- and HFC-Free Polyurethane	Class 1, CFC- and HFC-Free Polyurethane
<b>Insulation Density (lbs per ft³):</b>	2.2	2.2
<b>Insulation Type:</b>	Foamed-In-Place	Foamed-In-Place
<b>Gasket:</b>	Foamed-In-Place	Foamed-In-Place
<b>PANEL DIMENSIONS</b>		
<b>Standard Thickness (Inches):</b>	4 ¼	4 ¼
<b>Applications Below -10 ° F Thickness (Inches):</b>	N/A	5
<b>Maximum Length (Inches):</b>	173 ½	173 ½
<b>Maximum Width (Inches):</b>	46.5	46.5
<b>Outdoor Dimensions</b>	Contact Leer Inc.	Contact Leer Inc.
<b>WEIGHT LOAD CAPACITIES</b>		
<b>Capacities:</b>	Contact Leer Inc.	Contact Leer Inc.
<b>Structural Steel Support:</b>	Upon Request	Upon Request
<b>Ceiling Hanger Support:</b>	Upon Request	Upon Request
<b>PANEL FINISHES</b>		
<b>Standard:</b>	<ul style="list-style-type: none"> <li>26-Gauge, Acrylic Coated, Embossed, Galvanized Steel</li> </ul>	<ul style="list-style-type: none"> <li>26-Gauge, Acrylic Coated, Embossed, Galvanized Steel</li> </ul>
<b>Stock:</b>	<ul style="list-style-type: none"> <li>26-Gauge, Black, White, Almond or Gray, Stucco-Embossed, Galvanized Steel</li> <li>18- or 20- Gauge, White or Natural, Stucco or Smooth, Aluminum</li> <li>24- or 26- Gauge, White, Smooth, Aluminum</li> <li>22-Gauge, Natural, 304 or 316L, Stainless Steel</li> </ul>	<ul style="list-style-type: none"> <li>26-Gauge, Black, White, Almond or Gray, Stucco-Embossed, Galvanized Steel</li> <li>18- or 20- Gauge, White or Natural, Stucco or Smooth, Aluminum</li> <li>24- or 26- Gauge, White, Smooth, Aluminum</li> <li>22-Gauge, Natural, 304 or 316L, Stainless Steel</li> </ul>
<b>Custom (May Extend Lead Time):</b>	Upon Request	Upon Request
<b>AVAILABLE TYPES</b>		
<b>Cam Down:</b>	Yes	Yes
<b>Lag Down:</b>	No	No



## WALL & CORNER PANELS

## SERVICE DOORS

WALL	Cooler	Freezer
<b>Construction Details</b>		
<b>Tongue &amp; Groove Rail:</b>	Soft Rail	Soft Rail
<b>Adjoining Style:</b>	Cam-Action Locking Fasteners	Cam-Action Locking Fasteners
<b>Insulation:</b>	Class 1, CFC- and HFC-Free Polyurethane	Class 1, CFC- and HFC-Free Polyurethane
<b>Insulation Density (lbs per ft³):</b>	2.2	2.2
<b>Insulation Type:</b>	Foamed-In-Place	Foamed-In-Place
<b>Gasket:</b>	Foamed-In-Place	Foamed-In-Place
<b>Maximum Cam Lock Distance (Inches):</b>	23	23
<b>Panel Dimensions</b>		
<b>Standard Thickness (Inches):</b>	4 ¼	4 ¼
<b>Applications Below -10°F Thickness (Inches):</b>	N/A	5
<b>Maximum Length (Inches):</b>	165 ¼	165 ¼
<b>Maximum Width (Inches):</b>	46	46
<b>Panel Finishes</b>		
<b>Standard:</b>	<ul style="list-style-type: none"> <li>26-Gauge, Acrylic Coated, Embossed, Galvanized Steel</li> </ul>	<ul style="list-style-type: none"> <li>26-Gauge, Acrylic Coated, Embossed, Galvanized Steel</li> </ul>
<b>Stock:</b>	<ul style="list-style-type: none"> <li>26-Gauge, Black, White, Almond or Gray, Stucco-Embossed, Galvanized Steel</li> <li>18- or 20- Gauge, White or Natural, Stucco or Smooth, Aluminum</li> <li>24- or 26- Gauge, White, Smooth, Aluminum</li> <li>22-Gauge, Natural, 304 or 316L, Stainless Steel</li> </ul>	<ul style="list-style-type: none"> <li>26-Gauge, Black, White, Almond or Gray, Stucco-Embossed, Galvanized Steel</li> <li>18- or 20- Gauge, White or Natural, Stucco or Smooth, Aluminum</li> <li>24- or 26- Gauge, White, Smooth, Aluminum</li> <li>22-Gauge, Natural, 304 or 316L, Stainless Steel</li> </ul>
<b>Custom (May Extend Lead Time):</b>	Upon Request	Upon Request

CORNER	Cooler	Freezer
<b>Construction Details</b>		
<b>Tongue &amp; Groove Rail:</b>	Soft Rail	Soft Rail
<b>Adjoining Style:</b>	Cam-Action Locking Fasteners	Cam-Action Locking Fasteners
<b>Insulation:</b>	Class 1, CFC- and HFC-Free Polyurethane	Class 1, CFC- and HFC-Free Polyurethane
<b>Insulation Density (lbs per ft³):</b>	2.2	2.2
<b>Insulation Type:</b>	Foamed-In-Place	Foamed-In-Place
<b>Gasket:</b>	Foamed-In-Place	Foamed-In-Place

SERVICE DOORS	Cooler	Freezer
<b>CONSTRUCTION DETAILS</b>		
<b>In-Fitting Flush Mounted:</b>	Yes	Yes
<b>Overlap</b>	Upon Request	Upon Request
<b>Structural Frame Material:</b>	Steel Frame	Steel Frame
<b>Pre-Hung:</b>	Yes	Yes
<b>Insulation:</b>	Class 1, CFC- and HFC-Free Polyurethane	Class 1, CFC- and HFC-Free Polyurethane
<b>Insulation Density (lbs per ft³):</b>	2.2	2.2
<b>Insulation Type:</b>	Foamed-In-Place	Foamed-In-Place
<b>Gasket Material:</b>	Vinyl (With Magnet)	Vinyl (With Magnet)
<b>Gasket:</b>	Foamed-In-Place	Foamed-In-Place
<b>Heated:</b>	Upon Request	Upon Request
<b>PANEL DIMENSIONS</b>		
<b>Standard Thickness (Inches):</b>	4 ¼	4 ¼
<b>Applications Below -10 ° ;F Thickness (Inches):</b>	N/A	5
<b>Standard Height (Inches):</b>	78	78
<b>Standard Width (Inches):</b>	36	36
<b>Custom Dimensions:</b>	Upon Request	Upon Request
<b>PANEL FINISHES</b>		
<b>Standard:</b>	<ul style="list-style-type: none"> <li>26-Gauge, Acrylic Coated, Embossed, Galvanized Steel</li> </ul>	<ul style="list-style-type: none"> <li>26-Gauge, Acrylic Coated, Embossed, Galvanized Steel</li> </ul>
<b>Stock:</b>	<ul style="list-style-type: none"> <li>26-Gauge, Black, White, Almond or Gray, Stucco-Embossed, Galvanized Steel</li> <li>18- or 20- Gauge, White or Natural, Stucco or Smooth, Aluminum</li> <li>24- or 26- Gauge, White, Smooth, Aluminum</li> <li>22-Gauge, Natural, 304 or 316L, Stainless Steel</li> </ul>	<ul style="list-style-type: none"> <li>26-Gauge, Black, White, Almond or Gray, Stucco-Embossed, Galvanized Steel</li> <li>18- or 20- Gauge, White or Natural, Stucco or Smooth, Aluminum</li> <li>24- or 26- Gauge, White, Smooth, Aluminum</li> <li>22-Gauge, Natural, 304 or 316L, Stainless Steel</li> </ul>
<b>Custom (May Extend Lead Time):</b>	Upon Request	Upon Request
<b>AVAILABLE TYPES</b>		
<b>Service Doors:</b>	Yes	Yes
<b>Specialty Doors:</b>	Upon Request	Upon Request
<b>HARDWARE</b>		
<b>Door Closer:</b>	Hydraulic, Chrome-Plated	Hydraulic, Chrome-Plated
<b>Door Latch:</b>	Key Lock, Brushed-Chrome	Key Lock, Brushed-Chrome
<b>Safety Release:</b>	Yes	Yes
<b>Door Hinges:</b>	Cam-Lift, Spring-Loaded Self-Closing, Brushed-Chrome	Cam-Lift, Spring-Loaded Self-Closing, Brushed-Chrome
<b>Pressure Release Vent:</b>	N/A	Yes
<b>Sweep Gasket:</b>	Double Blade, Rubber	Double Blade, Rubber
<b>Digital Thermometer:</b>	Upon Request	Upon Request
<b>Dial Thermometer:</b>	Yes	Yes
<b>Light Switch:</b>	Yes	Yes
<b>Light Fixture (Bulb Not Included):</b>	Vapor-Proof, Shatter-Proof Fixture	Vapor-Proof, Shatter-Proof Fixture



## REFRIGERATION & ACCESSORIES

## WALK-IN REPLACEMENT DOORS

### POPULAR ACCESSORIES AVAILABLE UPON REQUEST:

- LED Lights
- Fluorescent Lights
- Kick Plate
- Strip Curtain
- Vision Windows
- Shelving/Racking
- Trim/Closure Panel
- Door Drip Cap
- Corner Guard
- Locking Bar
- Bumper Rails
- Membrane Roof Cap
- Reinforced Floor
- Reinforced Wall Backing
- Internal Ramp
- External Ramp
- Alarm System Options

REFRIGERATION	Cooler	Freezer
<b>Manufacturing Partner:</b>	Heatcraft Worldwide Refrigeration	Heatcraft Worldwide Refrigeration
<b>Drop-In:</b>	Upon Request	Upon Request
<b>Remote:</b>	Upon Request	Upon Request

### REPLACEMENT DOOR

### Cooler & Freezer

CONSTRUCTION DETAILS	
<b>Overlap:</b>	Yes
<b>Structural Frame Material:</b>	Wood Frame
<b>Frame Type:</b>	Jamb or Face
<b>Pre-Hung:</b>	Yes
<b>Insulation:</b>	Class 1, CFC- and HFC-Free Polyurethane
<b>Insulation Density (lbs per ft³):</b>	2.2
<b>Insulation Type:</b>	Foamed-In-Place
<b>Gasket:</b>	Vinyl (With Magnet)
<b>Heated:</b>	Upon Request
PANEL DIMENSIONS	
<b>Standard Thickness (Inches):</b>	4 ¼
<b>Standard Height (Inches):</b>	78
<b>Standard Width (Inches):</b>	36
<b>Custom Dimensions:</b>	Upon Request
PANEL FINISHES	
<b>Standard:</b>	<ul style="list-style-type: none"> <li>• 26-Gauge, Acrylic Coated, Embossed, Galvanized Steel</li> </ul>
<b>Stock:</b>	<ul style="list-style-type: none"> <li>• 26-Gauge, Black, White, Almond or Gray, Stucco-Embossed, Galvanized Steel</li> <li>• 18- or 20- Gauge, White or Natural, Stucco or Smooth, Aluminum</li> <li>• 24- or 26- Gauge, White, Smooth, Aluminum</li> <li>• 22-Gauge, Natural, 304 or 316L, Stainless Steel</li> </ul>
<b>Custom (May Extend Lead Time):</b>	Upon Request
AVAILABLE TYPES	
<b>Service Doors:</b>	Yes
<b>Specialty Doors:</b>	Upon Request
HARDWARE	
<b>Door Closer:</b>	Hydraulic, Chrome-Plated
<b>Door Latch:</b>	Key Lock, Brushed-Chrome
<b>Safety Release:</b>	Yes
<b>Door Hinges:</b>	Cam-Lift, Spring-Loaded Self-Closing, Brushed-Chrome
<b>Sweep Gasket:</b>	Double Blade, Rubber
<b>Digital Thermometer:</b>	Upon Request
<b>Dial Thermometer:</b>	Upon Request
<b>Light Switch:</b>	Upon Request
<b>Light Fixture (Bulb Not Included):</b>	Upon Request
<b>Kick Plate:</b>	Upon Request
<b>Vision Windows:</b>	Upon Request
<b>Door Drip Cap:</b>	Upon Request



# CERTIFICATIONS & WARRANTY

# HOW TO BUY

Department of Energy: DOE Compliant

NSF International: NSF Listed

Underwriters Laboratories: UL Classified - Panels

Underwriters Laboratories: UL Listed - Doors

Underwriters Laboratories of Canada: ULC Listed - Panels

Underwriters Laboratories of Canada: ULC Listed - DoorS



Note: Both Walk-In Panels and Walk-In Doors are DOE Compliant.

Note: Surface Burning Characteristics of Building Materials and Fire Test of Interior Finish Material Classified.

Note: Commercial Refrigerators and Freezers Listed.

Note: Surface Burning Characteristics of Building Materials and Assemblies Listed.

Note: Refrigeration Equipment Listed.

Factory Mutual: FM Approved

International Energy Conservation Code - Energy Independence And Security Act: EISA Compliant

State Of Wisconsin Department Of Safety And Professional Services: State Of Wisconsin Approved

State Of Oregon Building Codes Division: State Of Oregon Approved

City Of Houston Building Inspection Division: City Of Houston Certified

City Of Chicago Department Of Buildings: City Of Chicago Compliant



Note: FM Approved units must be requested.

Note: Pressure Release Valves for units being shipped into the City of Chicago must be requested.

California Prop 65 Compliant

California Air Resources Board: CARB Compliant



Note: CARB Complaint units must be requested.

**PANEL WARRANTY**  
**10 YEARS**

**COMPRESSOR WARRANTY**  
**REMOTE REFRIGERATION: 1 YEAR**  
**DROP-IN REFRIGERATION: 2 YEARS**

**LABOR WARRANTY**  
**30 DAYS**

Extended Compressor and Labor Warranties Available

We want to be your trusted partner in temperature-controlled storage solutions and make your buying process as smooth as possible. Therefore, we have several routes to market you can choose from: Purchasing Direct Via Leer, Purchasing Through Our Distributors, or Purchasing Through Our E-Commerce Partners.

## PURCHASING DIRECT VIA LEER



### Leer Walk-In Sales Offices

206 Leer Street  
New Lisbon, WI 53950  
(800) 766-5337

## MANUFACTURERS REP PARTNERSHIPS

Visit [leerinc.com/how-to-buy/how-to-buy-walk-ins/](http://leerinc.com/how-to-buy/how-to-buy-walk-ins/) to locate a Leer Walk-In Representative near you!

## A DEDICATED TEAM OF EMPLOYEE-OWNERS READY TO ASSIST YOU

### Call Technical Support and Customer Service:

(800) 766-5337

#### Email Us:

[sales@leerinc.com](mailto:sales@leerinc.com)

#### Fill out the Contact Us Form:

[leerinc.com/contact-us](http://leerinc.com/contact-us)





## LEER PRODUCTS

## LEER PRODUCTS



### REFRIGERATED REACH-IN STORAGE

For Restaurant, C-Store, and business owners alike looking to maximize their revenue generating space, Leer's Refrigerated Reach-In Storage units offer a versatile solution to their storage needs by offering customized weatherproof units that feature small footprints but large capacities.



### ICE MERCHANTISERS

For ice manufacturers, retail store owners, and special sites alike, Leer is the industry leader in innovation, quality, lead-time and reliability across our lineup of customizable indoor, outdoor, international and specialty Ice Merchandisers.



### REFRIGERATED TRANSPORTS & TRUCK BODIES

Leer's Transports & Truck Bodies utilize the same quality materials and construction as our Merchandisers, but are designed to fit your on-the-go needs be that on a trailer or in the bed of your truck. Temperatures can be optimized as a Cooler, Freezer, or for Ice.



### ICE VENDING MACHINES

Where there's a need for ice isn't always convenient enough for a whole store. For remote locations, and services without 24/7 employees, Leer's Ice Vending Machines offer the most affordable, reliable and simplest solution to Ice Merchandising needs.

