

SESCO

Food Service Equipment



PRODUCT Guide 2024

When you need it
yesterday



Many products able to ship
same day if ordered by noon

* Call for details

Indiana

Call Olivia Mathews
317.408.1140
oliviam@sesco.biz

SESCO
5705 Valley Belt Rd
Independence, OH 44131

* Please contact customer service to check availability
as we strive to maintain proper inventory levels.

Main: 800.222.0558
Fax: 800.251.7717

Panasonic

Quick Ship PRODUCTS



Model	Required Power	Receptical Required	Exterior / Interior	Cavity Dimensions (wxdxh)
1000 Watt OCS				
NE-1025F	120v (13.4A)	NEMA 5-15 R or NEMA 5-20 R	S/S Door, Steel Ext & Int.	13 x 13"x 8 1 16" "
NE-1054F	120v (13.4A)	NEMA 5-15 R or NEMA 5-20 R	S/S Door, Steel Ext & Int.	13 x 13"x 8 1 16" "
NE-1064F	120v (13.4A)	NEMA 5-15 R or NEMA 5-20 R	S/S Ext. & Int.	13 x 13"x 8 1 16" "
1200 Watt Pro I				
NE-12521	120v (17.7A)	NEMA 5-20 R	S/S Ext. & Int.	13" x 12" x 6 7 8"
NE-12523	120v (17.7A)	NEMA 5-20 R	S/S Ext. & Int.	13" x 12" x 6 7 8"
1700 Watt Pro I				
NE-17521	208V (14.3A), 230-240V (13.1A)	NEMA 6-15 or NEMA 6-20 R	S/S Ext. & Int.	13" x 12" x 6 7 8"
NE-17523	208V (14.3A), 230-240V (13.1A)	NEMA 6-15 or NEMA 6-20 R	S/S Ext. & Int.	13" x 12" x 6 7 8"
NE-17723	208V (14.3A), 230-240V (13.1A)	NEMA 6-15 or NEMA 6-20 R	S/S Ext. & Int.	13" x 12" x 6 7 8"
2100 Watt Pro I				
NE-21521	208V (16.6A), 230-240V (15.3A)	NEMA 6-20 R	S/S Ext. & Int.	13" x 12" x 6 7 8"
NE-21523	208V (16.6A), 230-240V (15.3A)	NEMA 6-20 R	S/S Ext. & Int.	13" x 12" x 6 7 8"
SONIC STEAMERS				
2100 Watt				
NE-2180	208V (20.0A), 230-240V (18.0A)	30 Amp, NEMA 6-20 R	S/S Ext. & Int.	21-1/16 x 13" x 9-7/8" "
3200 Watt				
NE-3280	208V (28.0A), 230-240V (25.3A)	30 Amp, NEMA 6-30 R	S/S Ext. & Int.	21-1/16 x 13" x 9-7/8" "
Hi-SPEED OVEN				
Convection, Broil, Microwave Combination				
NE-SCV2NAPR	208V (20.0A), 230-240V (18.0A)	30 Amp, NEMA 6-20 R	S/S Ext. & Int.	10-5/8 "x 13" x 4-5/16"
RICE COOKER				
		Cup / Servings		
SR-GA721L	208V (10.8A)	80-cup 168 Servings	Silver	21" x 19" x 14"
SR-GA541H	120v (15.0A)	60-cup 123 Servings	Silver	16 9/10" x 14 4/6" x 14 1/6"
SR-GA541FH	120v (15.0A)	60-cup 123 Servings	Silver	16 9/10" x 14 4/6" x 14 1/6"
SR-GA421FH	120v (12.9A)	46-cup 94 Servings	White	16 7/8" x 10 1/2" x 11 7/8"
SR-42H2P	120v (12.9A)	46-cup 94 Servings	Silver	16 7/8" x 10 1/2" x 11 7/8"
SR-2363ZW	120v (12.9A)	40-cup 70 Servings	White Stripe Ext	16 9/10" x 14 4/5" x 14 1/5"

NEW!
SONIC CHEF

Panasonic

COMMERCIAL HIGH-SPEED OVEN



Convection
Broil
Microwave

6 - Heating Patterns!



NE-SCV2NAPR

Compact
Stackable

See the Video

SONIC STEAMER

Powered by microwave technology

**Get an energy-saving connectionless steamer -
and for a whole lot less**

No hood, no plumbing, no de-liming



See the Video

Foods The Sonic Steamer Excels in:

- Vegetables
- Seafood
- Rice and Grains
- Pastas
- Thawing frozen soups
- Scrambled Eggs
- Rethermaling all foods
- Fast boost heating

Panasonic



NE-2180
NE-3280

**Retains up to 7X more water-soluble
nutrients in foods than conventional methods**

Instant Steam Convenient Plug-in Saves Energy

COMMERCIAL ELECTRIC RICE COOKERS



See the Video

Designed for quantity and convenience, the Panasonic commercial rice cooker series comes in a choice of capacities from approximately 75 to 168 max 3 oz. portions in 40 minutes or less. All are fully UL and NSF approved for durability and safety certification for commercial use.



EXCLUSIVE FEATURES



FOOD ZONE
Sanitation has never been easier. Unique plastic food zone parts snap in and out and are dishwasher safe.



WATER DISTRIBUTION TUBE
No bottle brushes required. Easily removed and disassembled for cleaning. Dishwasher safe.



DUAL EXHAUST
Groundbreaking technology allows hot-air discharge from the side and/or the top of every unit.



ONE-TOUCH CLEANING
One touch to sanitize, one touch to de-lime. LEDs signal when cleaning is required.



Half Cube 7/8" x 7/8" x 3/8"

Full Size Cube Style also available - Call SESCO



30" Wide Half Size Cube (W)idth x (D)epth x (H)eight inches	Model Number	Ice Production lbs (kg)/24 hr @		Condensing Unit	Voltage Characteristics	Approximate Shipping Weight lbs (kg)	
		70°F Air 50°F Water	90°F Air 70°F Water				
<p>CIM0330 ON B55 24.25 inches depth (764)</p>	CIM0330HA	313	244	Air	115/60/1	145 (65.7)	
	CIM0330HW	316	274	Water	115/60/1	145 (65.7)	
	CIM0430HA	435	320	Air	115/60/1	155 (70.3)	
	CIM0430HW	460	380	Water	115/60/1	155 (70.3)	
	CIM0530HA	561	432	Air	115/60/1	155 (70.3)	
	CIM0530HW	586	533	Water	115/60/1	155 (70.3)	
	CIM0636HA	600	455	Air	208-230/60/1	160 (72.5)	
	CIM0636HW	620	415	Water	208-230/60/1	160 (72.5)	
	High Production 30" Wide 30" W x 24.25"D x 26.9"H						
		CIM0836HA	896	711	Air	208-230/60/1	220 (100)
	CIM1136HA	932	762	Air	208-230/60/1	230 (105)	


22" Wide Half Size Cube (W)idth x (D)epth x (H)eight inches	Model Number	Ice Production lbs (kg)/24 hr @		Condensing Unit	Voltage Characteristics	Approximate Shipping Weight lbs
		70°F Air 50°F Water	90°F Air 70°F Water			
<p>CIM0320 ON B42</p>	CIM0320HA	313	244	Air	115/60/1	150
	CIM0520HA	561	432	Air	115/60/1	165

Limitless
Fit for any space.
Our exclusive, groundbreaking technology is designed to discharge hot air from both the side and top of the unit, making it the ultimate solution for tight spaces regardless of air flow requirements.


Water Filters


Ask us how a water filter can extend a CIM Series cuber evaporator warranty


Half Size Cube Model Dimensions (W)idth x (D)epth x (H)eight inches	Model Number	Ice Production lbs (kg)/24 hr @		Application Bin Storage lbs (kg)	Condensing Unit	Voltage Characteristics	Approximate Shipping Weight lbs (kg)
		70°F (21°C) Air 50°F (10°C) Water	90°F (32°C) Air 70°F (21°C) Water				
	ICEU220HA	238 (108)	175 (79)	70 (32)	Air	115/60/1	160 (73)
	ICEU300HA	309 (140)	205 (92)	97 (44)	Air	115/60/1	206 (93)

	Model Number	Machine Height Standard/ Short Leg (in)**	Ice Production lbs / 24 hr @ 70°F Air/ 50°F Water	Ice Production lbs / 24 hr @ 90°F Air/ 70°F Water	Bin Storage (lbs)	Condensing Unit	Voltage Units	Ship Weight (lbs)
	UCG060A	30.25-32 / 27.375-27.75	63	45	17.5	Air	115/60/1	81.5
	UCG080A	32.25-34 / 29.375-29.75	95	77.8	33	Air	115/60/1	81.5
	UCG100A	36-37.75 / 33.125-33.5	114	91.7	48.5	Air	115/60/1	97
	UCG130A		121	114.3				
	UCG130GA*		121	100.5				

* Gourmet Grande

Nugget Ice Model Dimensions 14 7/8" W x 23 7/8" D x 34 3/8" H	Model Number	Ice Production lbs (kg)/24 hr @		Condensing Unit	Voltage Characteristics	Approximate Shipping Weight lbs (kg)
		70°F (21°C) Air 50°F (10°C) Water	90°F (32°C) Air 70°F (21°C) Water			
	GEMU090	85 (39)	60 (27)	Air	115/60/1	133 (60.5)

Nugget Ice Model Dimensions 21" W x 24" D x 27" H	Model Number	Ice Production lbs (kg)/24 hr @		Condensing Unit	Voltage Characteristics	Approximate Shipping Weight lbs (kg)	
		70°F (21°C) Air 50°F (10°C) Water	90°F (32°C) Air 70°F (21°C) Water				
	GEMO450A	464 (210)	354 (161)	Air	115/60/1	205 (93)	
	GEMO650A	740 (336)	550 (249)	Air	115/60/1	205 (93)	
	GEMO956A	1053 (478)	753 (342)	Air	208-230/60/1	290 (132)	
	KBT24	Bin Kit for (1) GEM or on a 22" bin					10 (5)
	KBT19	Bin Kit for GEM Series on a 30" bin					22 (10)
	KBT23	Bin Kit for (1) GEM Series on a B110					33 (15)
	KBT22	Bin Kit for (2) GEM on a B110 bin					33 (15)

Storage Bins	Model Number	Application Bin Storage lbs (kg)	Bin Dimensions (W)idth x (D)epth x (H)eight inches (mm)	Approximate Shipping Weight lbs (kg)
	B25	242 (110)	30 x 31 x 28 (762 x 787 x 711)	74 (34)
	B40	344 (156)	30 x 31 x 37 1/2 (762 x 787 x 953)	103 (47)
	B42	351 (160)	22 x 31 x 50 (559 x 787 x 1270)	99 (45)
	B55	510 (232)	30 x 31 x 50 (762 x 787 x 1270)	125 (57)
	B110	854 (388)	48 x 31 x 50 (1219 x 787 x 1270)	191 (87)

**SESCO
ROYAL**

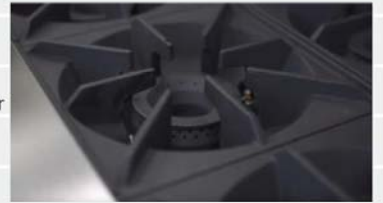


**Quick Ship
PRODUCTS**

RANGES



MODEL NUMBER	Description
RR-4	4 burner gas range with standard oven
RR-6	6 burner gas range with standard oven
RRE-4	4 burner electric range - 208 or 240 volt only
RRE-6	6 burner electric range - 208 or 240 volt only
RR-6C	6 burner gas range with convection oven
RR-6G24	60" gas range - 6 burners, 24" manual griddle
RR-6RG24	60" gas range - 6 burners, 24" raised griddle/broiler
RR-10	60" gas range - 10 burners
RR-4G36	60" gas range - 4 burners, 36" manual griddle



FRYERS



MODEL NUMBER	Description
RFT-50	50 lb gas fryer
RFT-60	60 lb gas fryer
RFT-75	75 lb gas fryer
REEF-35	40 lb high efficiency gas fryer
RCF-25	25 lb countertop gas fryer



Mobility Kits for Ranges, Fryers

RMK-243648	Range - 24", 36" & 48", includes casters (4), 48" gas hose & restrain cable
RMK-6072	Range- 60" and 72", includes casters (6), 48" gas hose & restrain cable
FMK	Fryer - includes casters, 48" gas hose and restrain cable

Casters for Ranges, Fryers

RC-243648	Casters (4) only, 24", 36" and 48" ranges
RC-6072	Casters (6) only, 60" and 72" ranges
FC	Casters only, Gas Fryer

SESCO

5705 Valley Belt Road, Independence, OH 44131
Phone: 800.222.0558









**SESCO
ROYAL**

Quick Ship **PRODUCTS**



Electric

CONVECTION OVENS

MODEL NUMBER	Description
RCOS-1	Single Deck gas convection oven
RECO-1 	Single deck electric convection oven - 208 or 240 volt only
RCOD-1	Single deck extra deep gas conv oven
RECOD-1 	Single deck extra deep electric conv oven - 208 or 240 volt only
RCOS-2	Double Deck gas convection oven
RECO-2 	Double deck electric convection oven - 208 or 240 volt only
RCOD-2	Double deck extra deep gas conv oven
RECOD-2 	Double deck extra deep electric conv oven - 208 or 240 volt only



STOCK POTS, GRIDDLES, BROILERS, CHEESEMELTERS

MODEL NUMBER	Description
RSP-18-24	18" stock pot range
RSB-36	36" gas salamander
RTG-24	24" thermostatic griddle
RTG-36	36" thermostatic griddle
RRB-24	24" radiant charbroiler
RRB-36	36" radiant charbroiler



Mobility Kit for Convection Oven

COCMK-1	Single Conv Oven – includes casters, 48" gas hose and restrain cable
COCMK-2	Double Conv Oven casters, 1 point gas manifold kit, 48" gas hose and restrain cable

Casters for Convection Ovens

COC	Casters only, Single Deck Convection Oven
COC-2	Casters only, Double Deck Convection Oven

SESCO

5705 Valley Belt Road, Independence, OH 44131
Phone: 800.222.0558

Many more Royal products available
Call for details





RF Hunter™

pure oil filtration

HF SERIES



ECCO ONE P

Model	Description
ECCO ONE P	Filter Machine Up To 65 Lbs Oil Capacity
HF80P	Filter Machine Up To 80 Lbs Oil Capacity
HF130P	Filter Machine Up To 130 Lbs Oil Capacity
Filter Paper	
FE02	Filter Envelopes 14 X 15.5
FE09	Filter Envelopes 17.5 X 18.5
Filter Powder	
FP22	Filter Powder Bulk 22 lb. Box
FP22C	Filter Powder Packets 3.2 oz
FP40100	Fryer Boil-Out Puck 4 oz Tablet



RM1424

Model	Description
Pancake Griddles (Low Grease)	
RM1220-8	12"X20" 10 ga 2-burner indoor/outdoor
RM1423-8	14"X23" 7 ga 2-burner rest./outdoor
RM1424	14"X24" 7 ga 2-burner restaurant
RM2323-8	23"X23" 7 ga 4-burner restaurant
RM2424	24"X24" 7 ga 4-burner restaurant
Add-On Griddles (High Grease)	
MC12-8	12"X24"X1.5" deep 7 ga 2-burner commercial griddle w/ grease tray
MC24-8	24"X24"X1.5" deep 7 ga 4-burner commercial griddle w/ grease tray
Add-On Broilers	
MB12-8	2-burner commercial w/ grease tray
MB24-8	4-burner commercial w/ grease tray



MC12



MB12

Quick Ship PRODUCTS



Connoisseur
825 Pkgs

C825C11Q-B1GB1A
Includes (2) 75 oz FourSide™ jars
C825C11Q-B1GB1D
Includes (2) 90 oz WildSide™ jars



Stealth
885 Pkgs
World's Quietest
Commercial Blender

S885C2901-B1GB1A
Includes (2) 75 oz FourSide™ jars
S885C2901-B1GB1D
Includes (2) 90 oz WildSide™ jars

STEALTH NITRO X



SNBS2C2901-B1K

Includes (2) Micronizers & Stands 41-605-03
(1) set of adapter rings 12, 16, 24, 32 oz

World's Quietest
Commercial Blender

No Waste - By the Cup
Blending
Stealth Nitro - by Blendtec



Four Side



Wild Side



JRE-610



JRE-612



Hard Lid



Soft Lid

ACCESSORIES

40-609-60	(FourSide-V) FourSide™ Jar, 75 oz. capacity jar with measurements up to 32 oz., includes: black vented Gripper™ lid, small tuned wingtip blade, jar markings in oz., ml. and cup indicators, Eastman Tritan™ copolyester construction, SPA-free, clear
40-609-61	(FourSide-S) FourSide™ Jar, 75 oz. capacity jar with measurements up to 32 oz., includes: black soft lid, small tuned wingtip blade, jar markings in oz., ml. and cup indicators (for use ONLY within sound enclosure), Eastman Tritan™ copolyester construction, SPA-free, clear
40-609-62	(FourSide-H) FourSide™ Jar, 75 oz. capacity jar with measurements up to 32 oz., includes: black hard lid, small tuned wingtip blade, jar markings in oz., ml. and cup indicators (for use ONLY within sound enclosure), Eastman Tritan™ copolyester construction, SPA-free, clear
40-630-61	(WildSide-S) WildSide™ Jar, 90 oz. capacity jar with measurements up to 44 oz. includes black soft lid, large tuned wingtip blade, jar markings in oz., ml. and cup indicators (for use ONLY within sound enclosure), Eastman Tritan™ copolyester construction, SPA-free, clear
40-630-62	(WildSide-H) WildSide™ Jar, 90 oz. capacity jar with measurements up to 44oz., includes: black hard lid, large tuned wingtip blade, jar markings in oz., ml. and cup indicators (for use ONLY within sound enclosure), Eastman Tritan™ copolyester construction, BPA-free, clear
JRE-610	(RR) Rapid Rinser™ Sprayer ONLY, includes: 6' flexible nylon-reinforced tubing with 3/8" compression fitting for water hook-up (minimum 60psi recommended)
JRE-612	(RRS) Rapid Rinser™ Station Complete Unit includes: Rapid Rinser™ sprayer & base, 6' flexible nylon-reinforced tubing with 3/8" compression fitting for water hook-up (minimum 30psi recommended), stainless steel nozzle, 120° spray nozzle coverage
40-209-01-SRV	(HardLid-BL) Hard Lid, built to produce an air tight seal, for smoothies, frozen drinks, slushes, etc. to be used on jars within sound enclosures, black, (fits both Wildside+ and Fourside jars), (10 per pack)
40-210-02-SRV	Soft Lid, built to produce an air tight seal, for smoothies, frozen drinks, slushes, etc. to be used on jars within sound enclosures, black, (fits both Wildside+ and Fourside jars), (10 per pack)

Kelvinator 

COMMERCIAL



3.0



REFRIGERATORS

FREEZERS

Refrigerators



KCHRI25RIDRE



KCHRI27R1DRE



KCHRI27R2HDR



KCHRI54R2DRE

Upright Reach in Refrigerators

PNC	model	description	unit WxHxD	shipping weight
738251	KCHRI25RIDRE	25 cu ft. Single Door Reach In Refrigerator, Back Room Application	30.6"x77.6"x28.8"	295 lb
738241	KCHRI27R1DRE	1-door reach-in refrigerator, stainless steel, 27 cubic feet, R290 refrigerant gas, +33/+41°F - Energy star	26,8"x82,3"x32,7"	306 lb
738280	KCHRI27R2HDR	2-half door reach-in refrigerator, stainless steel, 27 cubic feet, R290 refrigerant gas, +33/+41°F	26,8"x82,3"x31,9"	315 lb
738242	KCHRI54R2DRE	2-door reach-in refrigerator, stainless steel, 54 cubic feet, R290 refrigerant gas, +33/+41°F - Energy Star	53,9"x82,3"x32,7"	489 lb



KCHRI54R4HDR



KCHRI81R3DR



KCHRI27R1GDR



KCHRI54R2GDR

Upright Reach in Refrigerators

PNC	model	description	unit WxHxD	shipping weight
738282	KCHRI54R4HDR	4-half door reach-in refrigerator, stainless steel, 54 cubic feet, R290 refrigerant gas, +33/+41°F	53,9"x82,3"x31,9"	525 lb
738243	KCHRI81R3DR	3-door reach-in refrigerator, stainless steel, 81 cubic feet, R290 refrigerant gas, +33/+41°F	81"x82,3"x32,7"	668 lb
738278	KCHRI27R1GDR	1-glass door reach-in refrigerator, stainless steel, 27 cubic feet, R290 refrigerant gas, +33/+41°F - Energy star	26,6"x82,3"x31,9"	366 lb
738281	KCHRI54R2GDR	2-glass door reach-in refrigerator, stainless steel, 54 cubic feet, R290 refrigerant gas, +33/+41°F - Energy Star	53,9"x82,3"x31,9"	562 lb



KCHGM26R



KCHGM12R



KCHGM48R



KCHGM72R

Merchandiser Refrigerators

PNC	model	description	unit WxHxD	shipping weight
738248	KCHGM26R	1-glass door merchandiser refrigerator, black, 26 cubic feet, R290 refrigerant gas, +33/+41°F	28,3"x79,5"x33,9"	342 lb
738247	KCHGM12R	1-glass door merchandiser refrigerator, black, 12 cubic feet, R290 refrigerant gas, +33/+41°F	25"x61,8"x26"	254 lb
738249	KCHGM48R	2-glass door merchandiser refrigerator, black, 48 cubic feet, R290 refrigerant gas, +33/+41°F	54"x79,5"x31,9"	540 lb
738308	KCHGM72R	3-glass door merchandiser refrigerator, black, 72 cubic feet, R290 refrigerant gas, +33/+41°F	81"x79,5"x31,9"	732 lb



KCHUC27R



KCHUC48R



KCHUC60R



KCHUC72R



KCHUC27.2DR

Undercounter Refrigerators

PNC	model	description	unit WxHxD	shipping weight
738263	KCHUC27R	1-door undercounter refrigerator, 27", R600a refrigerant gas, 33/+41°F, stainless steel	27,8"x35,5"x29,9"	185 lb
738264	KCHUC48R	2-door undercounter refrigerator, 48", R600a refrigerant gas, 33/+41°F, stainless steel	48,2"x35,5"x29,9"	278 lb
738291	KCHUC60R	2-door undercounter refrigerator, 60", R600a refrigerant gas, 33/+41°F, stainless steel	61,3"x35,5"x29,9"	313 lb
738292	KCHUC72R	3-door undercounter refrigerator, 72", R600a refrigerant gas, 33/+41°F, stainless steel	71,5"x35,5"x29,9"	368 lb
738290	KCHUC27.2DR	2-drawer undercounter refrigerator, 27", R600a refrigerant gas, 33/+41°F, stainless steel	27,6"x35,5"x29,9"	185 lb

Refrigerators



KCHUCWT27R



KCHUCWT48R



KCHUCWT60R



KCHUCWT72R

Undercounter Refrigerators with worktops

PNC	model	description	unit WxHxD	shipping weight
738299	KCHUCWT27R	1-door undercounter refrigerators with worktop, 27", R600a refrigerant gas, 33/+41°F, stainless steel	27,8"x39,4"x29,9"	190 lb
738300	KCHUCWT48R	2-door undercounter refrigerators with worktop, 48", R600a refrigerant gas, 33/+41°F, stainless steel	48,2"x39,4"x29,9"	284 lb
738301	KCHUCWT60R	2-door undercounter refrigerators with worktop, 60", R600a refrigerant gas, 33/+41°F, stainless steel	61,3"x39,4"x29,9"	320 lb
738302	KCHUCWT72R	3-door undercounter refrigerators with worktop, 72", R600a refrigerant gas, 33/+41°F, stainless steel	71,5"x39,4"x29,9"	379 lb



KCHBC36



KCHBC50



KCHBC65



KCHBC95

Horizontal Bottle Coolers

PNC	model	description	unit WxHxD	shipping weight
738294	KCHBC36	1-door bottle cooler with slide top, 36", R600a refrigerant gas, +33/+41°C, black	36,8"x35"x27"	212 lb
738267	KCHBC50	2-door bottle cooler with slide top, 50", R600a refrigerant gas, +33/+41°C, black	49,4"x35"x27"	298 lb
738268	KCHBC65	2-door bottle cooler with slide top, 65", R600a refrigerant gas, +33/+41°C, black	64,3"x35"x27"	331 lb
738293	KCHBC95	3-door bottle cooler with slide top, 95", R600a refrigerant gas, +33/+41°C, black	95,3"x35"x27"	439 lb



KCHMC34



KCHMC49



KCHMC58

Milk Coolers

PNC	model	description	unit WxHxD	shipping weight
738275	KCHMC34	1-door school milk crate cooler, 34", R290 refrigerant gas, +33/+41°C	34"x42"x30,6"	225 lb
738276	KCHMC49	1-door school milk crate cooler, 48", R290 refrigerant gas, +33/+41°C	49"x42"x30,6"	277 lb
738277	KCHMC58	1-door school milk crate cooler, 60", R290 refrigerant gas, +33/+41°C	58,1"x42"x30,6"	300 lb



KCHBB48S



KCHBB60S



KCHBB72S



KCHBB48G

Back Bar Refrigerators

PNC	model	description	unit WxHxD	shipping weight
738269	KCHBB48S	2-door back bar refrigerator with black solid door, 48", R290 refrigerant gas, +33/+41°C	49,1"x36,3"x24,4"	265 lb
738270	KCHBB60S	2-door back bar refrigerator with black solid door, 60", R290 refrigerant gas, +33/+41°C	61,1"x36,3"x24,4"	309 lb
738271	KCHBB72S	3-door back bar refrigerator with black solid door, 72", R290 refrigerant gas, +33/+41°C	73,1"x36,3"x24,4"	346 lb
738272	KCHBB48G	2-door back bar refrigerator with glass door, 48", R290 refrigerant gas, +33/+41°C	49,1"x36,3"x24,4"	306 lb

Refrigerators



KCHBB60G



KCHBB72G



KCHBB48SS



KCHBB60SS



KCHBB72SS

Back Bar Refrigerators

PNC	model	description	unit WxHxD	shipping weight
738273	KCHBB60G	2-door back bar refrigerator with glass door, 60", R290 refrigerant gas, +33/+41°C	61,1"x36,3"x24,4"	317 lb
738274	KCHBB72G	3-door back bar refrigerator with glass door, 72", R290 refrigerant gas, +33/+41°C	73,1"x36,3"x24,4"	417 lb
738305	KCHBB48SS	2-door back bar refrigerator with stainless steel solid door, 48", R290 refrigerant gas, +33/+41°C	49,1"x36,3"x24,4"	273 lb
738306	KCHBB60SS	2-door back bar refrigerator with stainless steel solid door, 60", R290 refrigerant gas, +33/+41°C	61,1"x36,3"x24,4"	320 lb
738307	KCHBB72SS	3-door back bar refrigerator with stainless steel solid door, 72", R290 refrigerant gas, +33/+41°C	73,1"x36,3"x24,4"	359 lb



KCHBBD1D1T



KCHBBD2D1T



KCHBBD2D2T



KCHBBD3D2T

Back Bar Refrigerators

PNC	model	description	unit WxHxD	shipping weight
738295	KCHBBD1D1T	1-door back bar beer dispenser refrigerator with 1 beer columns, black solid door, 25", R290 refrigerant gas, +33/+41°C	24"x29,9"x33,9"	165 lb
738296	KCHBBD2D1T	2-door back bar beer dispenser refrigerator with 1 beer columns, black solid door, 48", R290 refrigerant gas, +33/+41°C	49"x24,5"x36,3"	282 lb
738297	KCHBBD2D2T	2-door back bar beer dispenser refrigerator with 2 beer columns, black solid door, 42", R290 refrigerant gas, +33/+41°C	49"x24,5"x36,3"	287 lb
738298	KCHBBD3D2T	3-door back bar beer dispenser refrigerator with 2 beer columns, black solid door, 72", R290 refrigerant gas, +33/+41°C	73"x24,5"x36,3"	392 lb



KCHCB48R



KCHCB60R



KCHCB72R

Chef Bases

PNC	model	description	unit WxHxD	shipping weight
738313	KCHCB48R	2-drawer chef refrigerated base, 48", R290 refrigerant gas, +33/+41°C, stainless steel	50"x31,9"x26"	260 lb
738311	KCHCB60R	2-drawer chef refrigerated base, 60", R290 refrigerant gas, +33/+41°C, stainless steel	62"x31,9"x26"	322 lb
738312	KCHCB72R	4-drawer chef refrigerated base, 72", R290 refrigerant gas, +33/+41°C, stainless steel	74"x31,9"x26"	362 lb

Refrigerators



KCHST27.8



KCHST48.12



KCHST60.16



KCHST70.18

Sandwich/Salad Preparation Tables

PNC	model	description	unit WxHxD	shipping weight
738255	KCHST27.8	1-door sandwich/salad preparation table for 6 GN 1/6+2 GN 1/9 containers, 27", R290 refrigerant gas, +33/+41°F, stainless steel	28,9"x43,3"x29,9"	236 lb
738256	KCHST48.12	2-door sandwich/salad preparation table for 12 GN 1/6 containers, 48", R290 refrigerant gas, +33/+41°F, stainless steel	48,3"x43,3"x29,9"	335 lb
738257	KCHST60.16	2-door sandwich/salad preparation table for 16 GN 1/6 containers, 60", R290 refrigerant gas, +33/+41°F, stainless steel	61,3"x43,3"x29,9"	320 lb
738258	KCHST70.18	3-door sandwich/salad preparation table for 18 GN 1/6 containers, 70", R290 refrigerant gas, +33/+41°F, stainless steel	71,7"x43,3"x29,9"	419 lb



KCHMT29.12



KCHMT48.18



KCHMT60.24



KCHMT70.30

Mega Top Tables

PNC	model	description	unit WxHxD	shipping weight
738259	KCHMT29.12	1-door mega top preparation table for 9 GN 1/6+3 GN 1/9 containers, 29", R290 refrigerant gas, +33/+41°F, stainless steel	28,9"x43,3"x31,9"	231 lb
738260	KCHMT48.18	2-door mega top preparation table for 18 GN 1/6 containers, 48", R290 refrigerant gas, +33/+41°F, stainless steel	48,3"x43,3"x31,9"	320 lb
738261	KCHMT60.24	2-door mega top preparation table for 24 GN 1/6 containers, 60", R290 refrigerant gas, +33/+41°F, stainless steel	61,3"x43,3"x31,9"	364 lb
738262	KCHMT70.30	3-door mega top preparation table for 30 GN 1/6 containers, 70", R290 refrigerant gas, +33/+41°F, stainless steel	71,7"x43,3"x31,9"	408 lb



KCHMT29.12.2D



KCHMT48.18.2D



KCHMT60.24.2D

Mega Top Tables

PNC	model	description	unit WxHxD	shipping weight
738286	KCHMT29.12.2D	2-drawer mega top preparation table for 9 GN 1/6+3 GN 1/9 containers, 29", R290 refrigerant gas, +33/+41°F, stainless steel	28,9"x43,3"x31,9"	231 lb
738287	KCHMT48.18.2D	4 drawer mega top preparation table for 18 GN 1/6 containers, 48", R290 refrigerant gas, +33/+41°F, stainless steel	48,3"x43,3"x31,9"	320 lb
738288	KCHMT60.24.2D	4 drawer mega top preparation table for 24 GN 1/6 containers, 60", R290 refrigerant gas, +33/+41°F, stainless steel	61,3"x43,3"x31,9"	364 lb



KCHPT50.6



KCHPT72.9



KCHPT92.12

Pizza Preparation Tables

PNC	model	description	unit WxHxD	shipping weight
738252	KCHPT50.6	1-door pizza preparation table, 50", R290 refrigerant gas, +33/+41°F, stainless steel	47,4"x41,3"x32,3"	311 lb
738253	KCHPT72.9	2-door pizza preparation table, 72", R290 refrigerant gas, +33/+41°F, stainless steel	70,8"x41,3"x32,3"	434 lb
738254	KCHPT92.12	3 door pizza preparation table, 92", R290 refrigerant gas, +33/+41°F, stainless steel	94,2"x41,3"x32,3"	564 lb



KCHRI25RIDFE



KCHRI27R1DFE



KCHRI27R2HDF



KCHRI54R2DFE



KCHRI81R3DF

Upright Reach in Freezers

PNC	model	description	unit WxHxD	shipping weight
738279	KCHRI25RIDFE	25 cu ft. Single Door reach in freezer, Back Room Application	30.6"x77.6"x28.8"	275 lb
738244	KCHRI27R1DFE	1-door reach-in freezer, stainless steel, 27 cubic feet, R290 refrigerant gas, -9°F - Energy Star	26,8"x82,3"x32,7"	326 lb
738285	KCHRI27R2HDF	2-half door reach-in freezer, stainless steel, 27 cubic feet, R290 refrigerant gas, -9°F	26,8"x82,3"x31,9"	337 lb
738245	KCHRI54R2DFE	2-door reach-in freezer, stainless steel, 54 cubic feet, R290 refrigerant gas, -9°F - Energy Star	53,9"x82,3"x32,7"	498 lb
738246	KCHRI81R3DF	3-door reach-in freezer, stainless steel, 81 cubic feet, R290 refrigerant gas, -9°F	81"x82,3"x32,7"	776 lb



KCHGM26F



KCHGM48F



KCHGM72F

Merchandiser Reach in Freezers

PNC	model	description	unit WxHxD	shipping weight
738250	KCHGM26F	1-glass door merchandiser freezer, black, 26 cubic feet, R290 refrigerant gas, -9°F	28,3"x79,5"x33,9"	353 lb
738309	KCHGM48F	2-glass door merchandiser freezer, black, 48 cubic feet, R290 refrigerant gas, -9°F	54"x79,5"x31,9"	564 lb
738310	KCHGM72F	3-glass door merchandiser freezer, black, 72 cubic feet, R404a refrigerant gas, -9°F	81"x79,5"x31,9"	820 lb



KCHUC27F



KCHUC48F

Undercounter Freezers

PNC	model	description	unit WxHxD
738265	KCHUC27F	1-door undercounter freezer, 27", R290 refrigerant gas, -9°F, stainless steel	32"x31"x76"
738266	KCHUC48F	2-door undercounter freezer, 48", R290 refrigerant gas, -9°F, stainless steel	48,2"x35,5"x29,9"



KCHUCWT27F



KCHUCWT48F

Undercounter Freezers with worktop

PNC	model	description	unit WxHxD
738303	KCHUCWT27F	1-door undercounter freezer with worktop, 27", R290 refrigerant gas, -9°F, stainless steel	27,8"x39,4"x29,9"
738304	KCHUCWT48F	2-door undercounter freezer with worktop, 48", R290 refrigerant gas, -9°F, stainless steel	48,2"x39,4"x29,9"

*** Chest Freezers**
1 Year Parts and Labor - 5 Year Compressor warranty



KCCF073WS



KCCF140WH



KCCF170WH



KCCF210WH

Chest Freezers Solid Lid

PNC	model	description	unit WxHxD	shipping weight
738089	KCCF073WS	7 cu. ft. Solid Lid Chest Freezer, 1 Wire Basket. 1 year parts & labor / 5 year compressor warranty.	38"x22"x33"	101 lb
738230	KCCF140WH	14 cu. ft. Solid Lid Chest Freezer, 1 Wire Basket. 1 year parts & labor / 5 year compressor warranty.	51.75"x29.3"x36"	187 lb
738231	KCCF170WH	17 cu. ft. Solid Lid Chest Freezer, 1 Wire Basket. 1 year parts & labor / 5 year compressor warranty.	59.5"x29.3"x36.5"	205 lb
738232	KCCF210WH	21 cu. ft. Solid Lid Chest Freezer, 1 Wire Basket. 1 year parts & labor / 5 year compressor warranty.	71"x29.3"x36"	240 lb

*** Novelty Glass Lid Chest Freezers**
1 Year Parts and Labor - 5 Year Compressor warranty



KCNF073WS



KCNF140WH



KCNF170WH

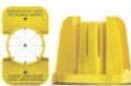
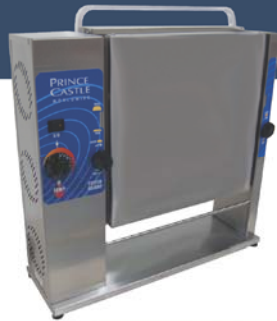
Chest Freezers Glass Lid

PNC	model	description	unit WxHxD	shipping weight
738090	KCNF073WS	7 cu. ft. Glass Lid Chest Freezer, 1 Wire Basket. 1 year parts & labor / 5 year compressor warranty.	38"x20.75"x33"	115 lb
738233	KCNF140WH	14 cu. ft. Glass Lid Chest Freezer, 1 Wire Basket. 1 year parts & labor / 5 year compressor warranty.	59.5"x27.3"x35"	194 lb
738234	KCNF170WH	18 cu. ft. Glass Lid Chest Freezer, 1 Wire Basket. 1 year parts & labor / 5 year compressor warranty.	71"x27.3"x35"	243 lb



MODEL	DESCRIPTION
MILK DISPENSERS	
SKMAJ1-ESUS4	Milk Dispenser 1 valve, with crate
SKMA2-ESUS4	Milk Dispenser 2 valve, with crates
SKMAJ3-ESUS4	Milk Dispenser 3 valve, with crates
DISPLAY CASE	
SKRM48-EGUS1	Display Case Mirrored Back
ICE CREAM UNITS	
SKRNB27-ESUS2	Fountainette W/O Pumps & Jars
SKEFT15-ELUS1	Ice Cream Freezer Two Facing
LETTUCE	
SKDL25-ESUS2	Lettuce Crisper/Dispenser
PREP TABLES	
SKPS8A-ELUS1	Silver King Counter Top Prep Table - Pan Rail (8) 1/6 pan capacity
SKPS12A-ELUS1	Silver King Counter Top Prep Table - Pan Rail (12) 1/6 pan capacity
UNDERCOUNTER REFRIGERATORS	
SKER48-SD-1-BK1	48" Undercounter Refrigerator
SKR27A/C10	27" Undercounter Refrigerator

Contact SESCO for Silver King solutions including:
 Chef Base Solutions, Dairy Dispensers, Undercounters, Drop In Freezers,
 Mobile Freezers, Prep Tables, and Shelf Refrigerators



MODEL	DESCRIPTION
TOASTING	
297-T20	Toaster Slim Line Bun-120V
TIMERS	
740-T2	Timer Single Func on 2 Ch
740-T4	Timer Single Func on 4 Ch
740-T8	Timer Single Func on 8 Ch
740-T12	Timer Single Func on 12 Ch
HOLDING	
DHB-P1A	Dedicated Holding Bin, Countertop
541-723E4S	Kit, Pan Cover (Pkg Of 4)
MODULAR HOLDING	
MHB100MB-NA	Main Base, Modular, 115VAC
MHB100HM1-SS	Single Sided Holding Module 120V
MHB100EB	Expansion Base, Modular
MHB100HM1	Holding Module, 110V
SABER KING	
980-000-00	Saber King Chassis
980-000-10A	Saber King Tomato Blade Pusher Set 3/16 Inch
980-000-20A	Saber King Onion Blade Pusher Set 3/16 Inch
980-000-33A	Saber King Lettuce Blade Pusher Set 1 x 2 Inch
TOMATO SABER	
943-A	Tomato Saber, 3/16in (Std Line)
BAGEL SABER	
970-A	Bagel Saber
CITRUS SABER	
CW-6	Citrus Saber -Yellow (8 Sec on)
DISPENSING	
136-1	Dispenser Bottles (Case of 9)
580-NMCC	Sauce Dispenser 1/3 Oz Red
581-NMCC	Sauce Dispenser White 1/2 Oz
582-NMCC	Sauce Dispenser Black 2/3 Oz
583-NMCC	Sauce Dispenser Green 1 Oz



DISHWASHERS
by ELECTROLUX



No Hot Water Line Required
No Pressure Boost Required

Undercounter Dishwashers

Description	Model
<p>Undercounter Dishwasher and Glasswasher, Atmospheric boiler, Energy Star 2.0, 30 racks/hour - 208V/1N/60Hz</p> <p>6.85 ElekW 208 V 1 60 Hz WxDxH 23 5/8"x 26 1/16"x 32 1/4" in lb 165 ft³ 17.68</p>	VLAI1G8
<p>Undercounter Dishwasher and Glasswasher, Atmospheric boiler, Energy Star 2.0, 30 racks/hour - 240V/1N/60Hz</p> <p>6.85 ElekW 240 V 1 60 Hz WxDxH 23 5/8"x 26 1/16"x 32 1/4" in lb 174 ft³ 17.68</p>	VLAI1G4



Hood Type Dishwashers

Description	Model
<p>Hood type insulated dishwasher with double skin hood, detergent and rinse aid dispenser, 63 racks/h, 208V/ 1ph/ 60Hz</p> <p>9.90 ElekW 208 V 1 60 Hz WxDxH 29 5/8"x 29 3/4"x 61 11/16" in lb 304 ft³ 43.27</p>	VDH63-1
<p>Hood type insulated dishwasher with double skin hood, detergent and rinse aid dispenser, 63 racks/h, 208V/ 3ph/ 60Hz</p> <p>12.90 ElekW 208 V 3 60 Hz WxDxH 29 5/8"x 29 3/4"x 61 11/16" in lb 311 ft³ 43.27</p>	VDH63



Ask SESCO today about Veetsan
The best value in dishwashing!



Quick Ship **PRODUCTS**



401



522

Soft Serve/ Yogurt Machines *		
401	208V/60/1	five 4 oz servings per minute, 20 qt capacity
407	115V/60/1	two 4 oz servings per minute, 7 qt capacity
DF200	115V/60/1	two 3 oz servings per minute, 7 qt capacity
Twist Soft Serve/ Yogurt Machines *		
501	208V/60/1	four 4 oz servings per minute per side 11 qt capacity per side - Countertop model
522	208v/60/1*	seven 4 oz servings per minute per side 17 qt capacity per side - Floor model
* Two separate circuits required.		



Frozen Beverage Machines *		
704	208V/60/1	28 gallons per hour, 35 qt capacity
707	115V/60/1	8 gallons per hour, 20 qt capacity



704



608S



Smoothie Machine *		
608S	115V/60/1	three 12 oz servings per minute, 20 qt capacity
Flurry/ Shake Mixture		
Cyclone	115V	High speed Compact mixer



ACCUFREEZE™
TECHNOLOGY

Call your **SESCO** Territory Manager for a professional consultation!

SECO SELECT

TEST OUR METAL™

SH14UA

- Fully insulated
- Patented Armor heating for quality food holding
- Holds 18" X 26" or 14" x 18 Trays & 12" x 20" Pans



Road Warrior



Contact SESCO for SECO Select solutions including Custom Serving Lines, Breakfast Carts, and much more...



QuickShip
32 sizes of walk-Ins
in 48 hours



Restaurant Coolers

Bakery & Pizza

Brewery - Walk ins

Beer Caves

Warehouse Solutions

Schools / Universities

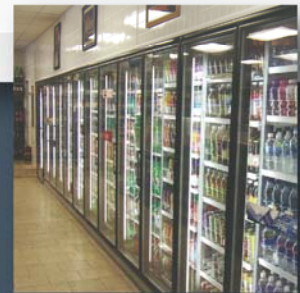
Restaurant Coolers

Supermarket

Convenience Stores

Labs - Medical Holding

Premium Walk-Ins
In all Sizes



All custom sizes available.

Voted # 1
By Installers For
Ease Of Installation

G-2 QuickShip

- 32 sizes of quick ship walk-ins available to ship within 2 days.
- High quality, heavy duty foamed in place construction that meets all new Dept of Energy guidelines
- Heavy duty welded 12 gauge steel door for strength and rigidity
- G-10 QuickShip

More Choices...ask how
Leer Quick Ship is the most flexible in the Industry.

Add other options such as floor, ramps, membrane roof, self contained drop-in refrigeration - for most units.
The box still ships quick - in only 10 days!





Stainless design.
Stellar performance.
Superior value.



Arctic Air Refrigeration Products

Ask SESCO today for how Arctic Air products can help your team

Modular[®] Foodservice Dispensers



Simpli-Flex Cup

1015023
SF2000 Cup Dispenser
23"x5"

Simpli-Flex Cone

1003846
SF1002 (1905842 gasket)
Cone Dispenser 24"x 4"

1003848
SF1002P w/ plastic tube
(1905842 gasket)
Cone Dispenser 31"x 4"

1003850
SF1002P w/ plastic tube
(1905842 gasket)
Cone Dispenser 19"x 31.13"

1007710
SF1002P w/ plastic tube
(1905842 gasket)
Cone Dispenser 31"x3.13"



Z-STAND 1008-30Z

1003865
for 3 cup/lid disp



Napkin

In-Counter Dispenser
1003971
6 1/2"D x 10 1/2"H x 8 1/4"W



Simpli-Flex Cup Dispenser

In-Counter / Cabinet Mount
1007699
CSF1003 for extra small / portion cups
24"L x 3" Dia

1015201
CSF1005 for large cups
24"L x 5" Dia



Simpli-Flex Cup Dispenser

Wall / Stand Mount
1007516
SF1003 for extra small / portion cups
16"L x 3 1/8" Dia



Countertop Adjustable Lid Dispenser

1004056
19" Wide 4 dividers

A NEW GENERATION IN STEAMING!



Boilerless 6 pan and 12 pan

Steam Generator



Quick Change Steam Generator 10 and 6 Pan Cabinets

Generators can be
changed in minutes

- * #1 Rated Commercial Steamer
in Speed and Efficiency
- * Energy Star Approved
- * Highest Production
Fastest Recovery in the Industry



Boilerless-12 Pan



Blue Flame

Product of the Year Award Winner



For more information
Contact SESCO today

Foodservice Products Group, Inc.
Alegacy[®]



Contact SESCO for more details...
and many more smallware solutions!

BakeMax

Bringing Solutions since 1966

Think Quality - Think Value - Think Service - Think BakeMax



Pizza Warmer
Display Cases



Mixers



Single Pass
& Double Pass
Sheeters



Manual and Automatic
Pizza / Tortilla Presses



Deck Oven
with Proofer



Grinders

Slicers



Conveyor Toasters
& Conveyor Bakers



Heated Display Cases
& Refrigerated Display Cases



Global Refrigeration, Inc.



**MADE
IN THE
USA**

High Quality Ice Cream Cases
and Hardening Cabinets

Contact SESCO today for information
on Global Refrigeration Products



USA & GLOBAL
MANUFACTURING



Innovation. Experience. Quality.
Contact SESCO for information on
Winholt products and stainless steel fabrication



GELATO / ICE CREAM DISPLAYS



PASTRY & BAKERY DISPLAYS



CHOCOLATE DISPLAYS



PANINI DISPLAYS



HOT & BAIN MARIE DISPLAYS



PREPARED FOOD DISPLAYS



GRAB AND GO DISPLAYS



MULTIDECKS



SUPERMARKET AND GROCERY



CAFETERIA DISPLAYS



MEAT FISH & CHEESE
DISPLAYS



DELI DISPLAYS



MEAT AGING



WINE CASES



UPRIGHT GLASS DOOR
FREEZERS & REFRIGERATORS



The Control Freak®

Induction Cooking System



Class-Leading Design
Masterfully Replicates your culinary creations



The HydroPro™ Plus

Commercial Sous Vide Immersion Circulator
with HACCP support

The industry's most precise
time-to-temperature and pasteurization control



Contact SESCO today for information on
Breville Commercial Products

the Juice Fountain® XL Pro

Commercial Centrifugal Juicer



the Super Q™ Pro

Commercial Super Blender



The Smoking Gun® Pro

Commercial Hand-held Smoke Infuser

The MX2 Infuser

Commercial Chamber Vacuum Sealer



Contact SESCO today for information on
Breville Commercial Products