

# Spare parts catalogue for standard and special containers in stainless steel



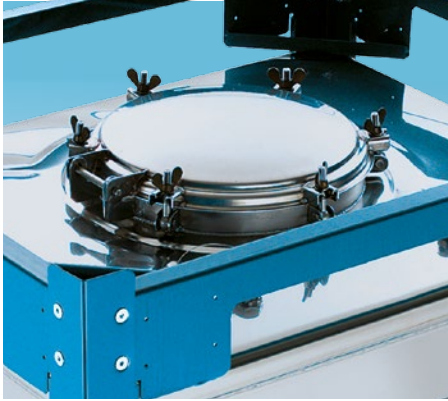
# SCHÄFER Container Systems – the container specialists



<b>I. Top section accessories</b>	<b>3</b>	<b>II. Outlet accessories</b>	<b>9</b>	<b>III. Contacts</b>	<b>14</b>
Screw covers	3	Ball valve	9	Individual consultation	14
Screw cover accessories	3-4	Ball valve, 3-parted	9	Request form	15
Clamping ring covers	5	Ball valve accessories	9		
Accessories for clamping ring cover	5-6	Tanker couplings	10		
Cover gaskets	6	Camlock couplings	11-12		
Connections and valves	7	Camlock coupling accessories	11		
Accessories for connections and valves	7-8	Butterfly valve	13		
		Butterfly valve accessories	13		
		Disc valve	13		

# Screw cover

## Screw cover



### Stainless steel screw cover for IBC manhole

For suitable cover gaskets see page 6

Material	Art. no.	Art. no.
<b>Diameter</b>	<b>DN 400</b>	<b>DN 457</b>
1.4301 IIIc	42657498	42654960
1.4301 III d	42651550	42651880
1.4404 IIIc	42655488	42658688

## Screw cover accessories



### Eye bolt

Material: 1.4301 (AISI 304) (stainless steel)  
Thread length: 50 mm

Dimensions	Art. no.
M12 x 80	31652477



### Wing nuts

Size: M12

Material	Art. no.
Brass	31652476
Stainless steel	31650164



## I. Top section accessories

# Screw cover

### Screw cover accessories



#### Bolts

Material: 1.4301 (AISI 304) (stainless steel)

Type	Dimensions	Art. no.
long	12 h 11 x 120 mm	<b>31652466</b>
short	12 h 11 x 28 mm	<b>31652478</b>



#### Washers

Material: 1.4301 (AISI 304) (stainless steel)

Suitable for all M12 threads

Size	Art. no.
A 13	<b>31652475</b>

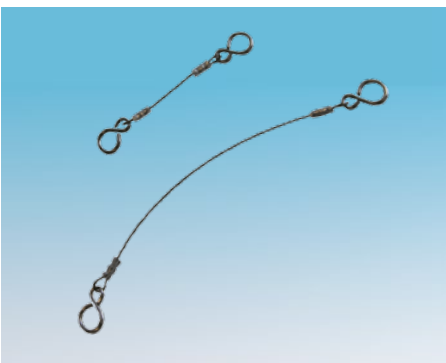


#### Safety rings

Material: 1.4301 (AISI 304) (stainless steel)

For 12 x 1 mm shafts

Dimensions	Art. no.
12 x 1 mm	<b>31652485</b>



#### Wire rope with s-hook

Material: 1.4301 (AISI 304) (stainless steel)

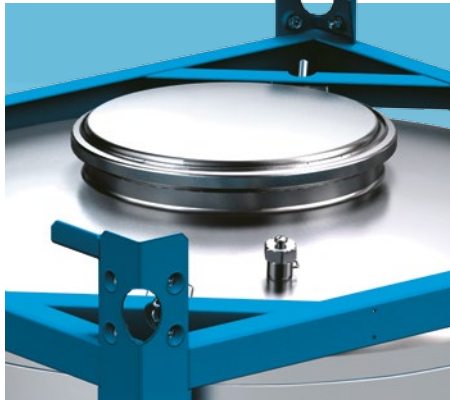
Delivery comprises: 1 item

Type	Size	Art. no.
long	300 mm*	<b>31652254</b>
short	150 mm*	<b>31652529</b>

\* Different lengths available on request

# Clamping ring covers

## Clamping ring covers



### Stainless steel clamping ring covers for IBC manhole

For suitable cover gaskets see Page 6

Material	Art. no.	Art. no.
<b>Diameter</b>	<b>DN 400</b>	<b>DN 457</b>
1.4301 IIIc (AISI 304)	42655710	42652012
1.4301 III d (AISI 304)	42655453	42650034
1.4404 IIIc (AISI 316L)	42653571	42650397
1.4571 IIIc (AISI 316Ti)	42654897	42655518

## Clamping ring cover accessories



### Clamping ring

Description	Art. no.	Art. no.
<b>Diameter</b>	<b>DN 400</b>	<b>DN 457</b>
Clamping ring with hand lever	42650391	42661036
Clamping ring with locking screw	-	42654475

### Threaded spindle

Material: 1.4301 (AISI 304) (stainless steel)

Size	Art. no.
M12	31651878

### Counter bearing

Material: brass

Size	Art. no.
M12	31652394

### Nuts

Material: brass

Description	Size	Art. no.
Round nuts	M12	31650055
Hexagonal nuts	M12	31652553

### Dowel pin

Material: 1.4301 (AISI 304) (stainless steel)

Size	Art. no.
4 x 20 mm	31650178



### Washers

Material: 1.4301 (AISI 304) (stainless steel)  
Suitable for all M12 threads

Size	Art. no.
A 13	31652475

# Cover gaskets



## Cover gaskets

Available in a range of different materials.

\*PTFE 19 mm only for screw covers

Material	Art. no.	Art. no.
<b>Diameter</b>	<b>DN 400</b>	<b>DN 457</b>
EPDM, black	<b>31652488</b>	<b>31650124</b>
EPDM, grey (FDA)	<b>31651494</b>	<b>31652196</b>
NBR, black	<b>31650127</b>	<b>31650122</b>
NBR, blue (FDA)	<b>31652271</b>	<b>31650123</b>
Viton, red/brown (FDA)	<b>31650118</b>	<b>31650125</b>
PTFE 19 mm* (FDA) (Neoprene with PTFE encapsulation)	<b>31650360</b>	<b>31652415</b>
Silicone, transparent (FDA)	<b>31650128</b>	<b>31650126</b>
Cell-PE, white	<b>31652235</b>	<b>31650180</b>



# Connections and valves

## Connections and valves



### Overpressure / vacuum valve 1"

#### External thread

Material: stainless steel, gasket made of Viton, EPDM or Kalrez

Set pressure	Art. no.
-0.05/+0.34 bar (1.4404, Viton) (AISI 316L, Viton)	<b>31652542</b>
-0.05/+0.34 bar (1.4404, EPDM) (AISI 316L, EPDM)	<b>31650478</b>
-0.05/+0.34 bar (1.4404, Kalrez) (AISI 316L, Kalrez)	<b>31651006</b>



### Overpressure / vacuum valve 1¼"

#### External thread

Material: 1.4301 (AISI 304) (stainless steel), gasket made of Viton

Set pressure	Art. no.
-0.05/+0.34 bar (1.4301) (AISI 304)	<b>31650099</b>



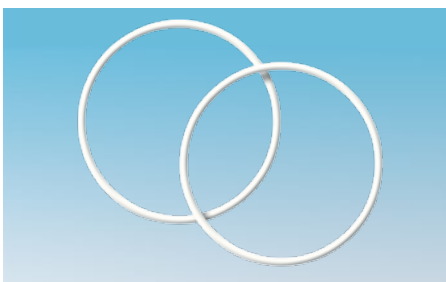
### Overpressure valve ( safety valve)

Material: 1.4301/1.4404 (AISI 304 / 316L) (stainless steel), gasket made of Viton, EPDM or Kalrez

Set pressure	Art. no.
0.4 bar (1.4301, Viton) (AISI 304, Viton)	<b>31652564</b>
0.4 bar (1.4301, Kalrez) (AISI 304, Kalrez)	<b>31652998</b>
0.4 bar (1.4404, Viton) (AISI 316L, Kalrez)	<b>31652926</b>
0.4 bar (1.4404, EPDM) (AISI 316L, Kalrez)	<b>31652057</b>

**More valve types available on request**

## Accessories for connections and valves



### Gasket for valve seat 1"

Material: PTFE  
(for Overpressure / vacuum valve and Overpressure valve ( safety valve))

Size	Art. no.
1"	<b>31652541</b>
1¼"	<b>31651557</b>

# Connections and valves

## Accessories for connections and valves



**Tri-Sure plug made of V4A  
(without gasket)**

Material: stainless steel

Size	Art. no.
2"	31650012

**PTFE gasket for Tri-Sure plug**

Size	Art. no.
2"	31651879



**Closure cap (incl. gasket)**

Material: stainless steel, PTFE gasket

Size	Material	Art. no.
1"	1.4408 (AISI 316)	31652490
2"	1.4408 (AISI 316)	31652336
3"	1.4301 (AISI 304)	31650682



**Gasket for closure cap**

Material: PTFE

Size	Art. no.
1"	31650019
2"	31652443
3"	on request



**Blind nut**

Material: stainless steel 1.4404 (AISI 316L),  
PTFE gasket

**More blind nuts available on request**

Diameter	Art. no.
DN 25	31651552
DN 40	31651704
DN 50	31650377
DN 80	31651551



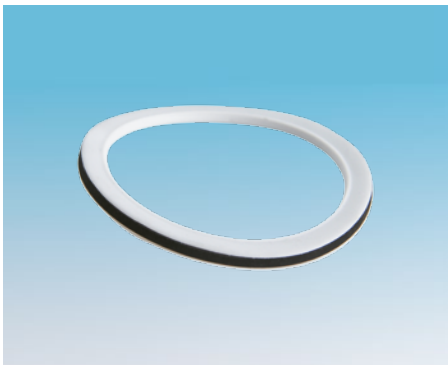
# Outlet accessories



### Ball valve

Material: stainless steel (AISI 316)

Size	Art. no.
1"	31650252
2"	31652544
3"	31653244



### Container flange gasket

Material: Perbunan with PTFE encapsulation

Size	Art. no.
3"	31652547

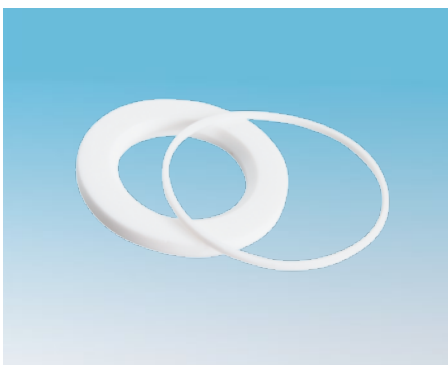


### Ball valve, 3-parted

Material: stainless steel (AISI 316)  
Type: weld ends on both sides

Size	Art. no.
1"	31650746
2"	31650345
3"	31650734

More ball valves available on request



### Sealing kit for 3-parted ball valve

Material: PTFE

Size	Art. no.
1"	on request
2"	31650469
3"	on request

# Tanker couplings



**Tanker coupling, type MK-VB incl. gasket**

Material: either stainless steel or brass

Type	Art. no.	Art. no.
	Stainless steel	Brass
MK 50	31652560	31650260
VB 50	31652559	31650261
MK 80	31650678	31650263
VB 80	31650791	31652253



**Tanker coupling gasket, type MK-VB**

**Coupling gasket**

Type	Material	Art. no.
MK 50	Viton	31652635
MK 50	Hypalon	31650104
MK 80	Viton	31650910
MK 80	Hypalon	31650103

**Thread gasket**

Type	Material	Art. no.
MK 50	PTFE	31650010
MK 50	NBR	31652085
MK 80	PTFE	31650005
MK 80	NBR	31652087



**Tanker coupling, type MB-VK**

Material: either stainless steel or brass

Type	Art. no.	Art. no.
	Stainless steel	Brass
MB 50	31652367	31652360
VK 50	31652364	31652365
MB 80	31650998	31652276
VK 80	31652650	31652274

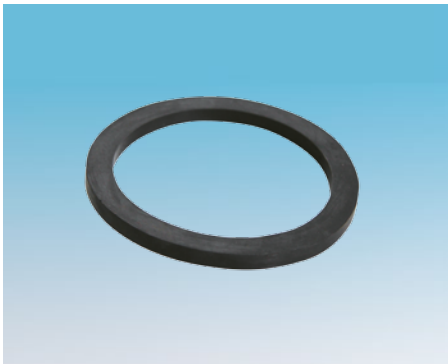
# Camlock couplings



### Camlock coupling, type 634 B

Material: either stainless steel or aluminium

Size	Art. no.	Art. no.
	<b>Stainless steel</b>	<b>Aluminium</b>
1"	31651885	31651883
2"	31650792	31650211
3"	31650154	31650155



### Gasket for Camlock coupling, type 634 B

Material: EPDM

Size	Art. no.
2"	31650937
3"	31653007



### Retaining clip for camlock coupling

Material: stainless steel

Type	Art. no.
Retaining clip	31651031

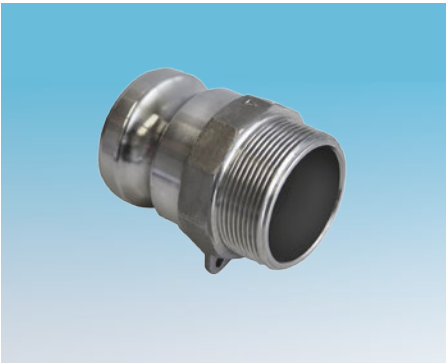
# Camlock couplings



**Camlock coupling, type 633 A  
(internal thread)**

Material: stainless steel

Size	Art. no.
1"	31651884
2"	31652387
3"	31651463



**Camlock coupling, type 633 F  
(external thread)**

Material: stainless steel

Size	Art. no.
1"	31652925
2"	31650015
3"	31650708

# Butterfly valve



## Butterfly valve

Material: housing – aluminium,  
shaft and disc – stainless steel (1.4301)  
(AISI 304)

Type	Gasket	Art. no.
BE 50	PTFE	<b>31650259</b>
BE 80	PTFE	<b>31650356</b>
BE 250	NBR	<b>31650373</b>
BE 250	EPDM	<b>31651833</b>

## Butterfly valve accessories



## Hand lever for BE

Size	Art. no.
BE 80	<b>31650130</b>
BE 250	<b>31652934</b>



## Collar gasket, type BE 80

Material: PTFE

Type	Art. no.
BE 80	<b>31651293</b>



## Disc valve

Material: 1.4301/1.4404 (AISI 304 / 316L)  
(stainless steel)

\* available with customer-specific  
gasket on request

Diameter	Art. no.
DN 25	–*
DN 40	–*
DN 50	–*
DN 80	–*

# Individual consulting

## Service Centre / Spare parts inquiries

### Julia Claßen

Telefon +49 (0) 2735/787-508

PC-Fax +49 (0) 2735/787-1508

E-Mail: [jclassen@schaefer-container-systems.de](mailto:jclassen@schaefer-container-systems.de)

### Marco Helmke

Telefon +49 (0) 2735/787-576

PC-Fax +49 (0) 2735/787-1576

E-Mail: [mhelmke@schaefer-container-systems.de](mailto:mhelmke@schaefer-container-systems.de)

## More information?

You can find the latest product information and much more besides in our current main catalogue which you can download or order at :

[www.schaefer-container-systems.com](http://www.schaefer-container-systems.com)

Your specialists for standard and special containers in stainless steel



[www.schaefer-container-systems.com](http://www.schaefer-container-systems.com)





# Just fax your inquiry!

## +49 (0) 2735/787-580

SCHÄFER WERKE GMBH  
Pfannenbergstraße 1 · D-57290 Neunkirchen  
Telefon +49 (0) 2735/787-508  
Telefax +49 (0) 2735/787-580  
E-mail: [ibc@schaefer-container-systems.de](mailto:ibc@schaefer-container-systems.de)

Production:  
SCHÄFER Sudex s.r.o.  
Podolí 5 · CZ-58401 Ledec nad Sázavou

Address	Delivery address (if different)
Company	Company
Name, recipient	Name, recipient
Address/house no.	Address/house no.
Post code/City or town	Post code/City or town
Tel.	Tel.
Fax	Fax
E-mail	E-mail
Date / signature	

Art.-no.	Description	Quantity

# Our production locations



Head office and production site at Neunkirchen (D)



Plant Betzdorf (D)



Plant Ledec nad Sázavou (CZ)

SCHAFFER Container Systems, the specialist for standard and special containers in stainless steel, is part of the internationally successful SCHAFFER WERKE.

This owner-led enterprise is headquartered in Neunkirchen in Germany's Siegerland region. The work of all SCHAFFER WERKE divisions – SCHAFFER Container Systems, SCHAFFER IT-Systems, SCHAFFER Industrial Solutions, SCHAFFER Interior Systems, SCHAFFER Perforated Metal, EMW Steel Service Centre – is based on high quality fine steel sheet. The processing of this material is one of the core competencies of this enterprise.

