

TABLET  
VALVE



CORA®



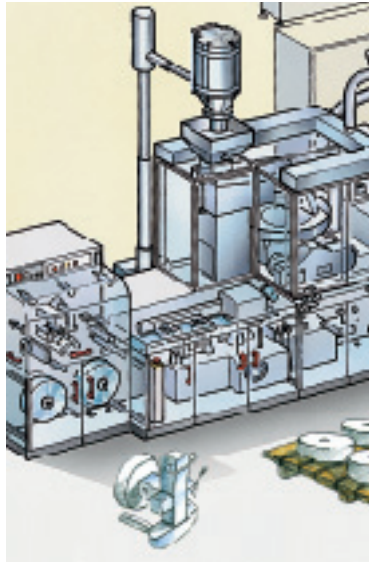




# TABLET VALVE

The **Tablet Valve** uses the same principle as the highly successful Sole Valve used in hundreds of pharmaceutical plants world wide.

The **Tablet Valve** is ideal for handling capsules, pills,

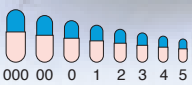


tablets, rubber and silicone caps.

The **Tablet Valve** has been also designed to give quick and total disassembling and easy cleaning without using any tools.

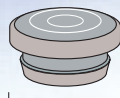


**Tablet Valve** set on a PVC drum and inverted by a Steri Lift over a wrapping machine.



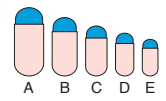
000 00 0 1 2 3 4 5

Capsules



13 - 32

Vial caps - Syringe components

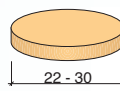


Supro capsules



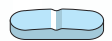
4 - 17

Swallowing tablets



22 - 30

Effervescent tablets



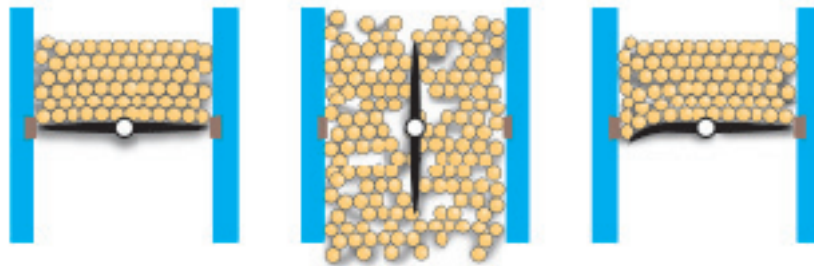
Oblong pills

# TABLET VALVE



The **Tablet Valve** vane is silicone coated and its outer surface is flexible. This allows opening/closing of the valve without damaging the product.

The silicone is of medical grade material based on the standards of Pharmacopoeia FDA 21 CFR 177.2600.



Product is held without any damage and can continue its flow as required.



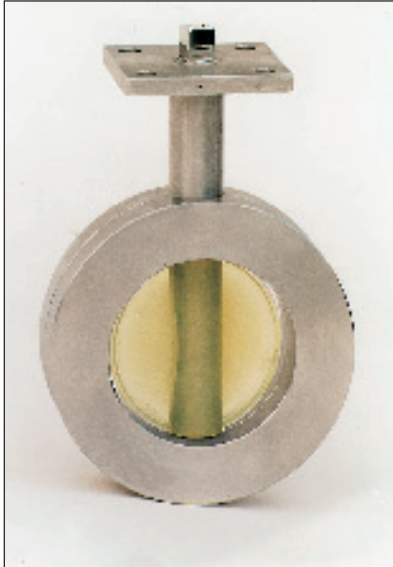
The charging unit is composed of an asymmetric cone and a **Tablet Valve**. The discharging unit is composed of a silicone cap (Sil Cap) and two Sole Valves automatically operated by pneumatic actuators.



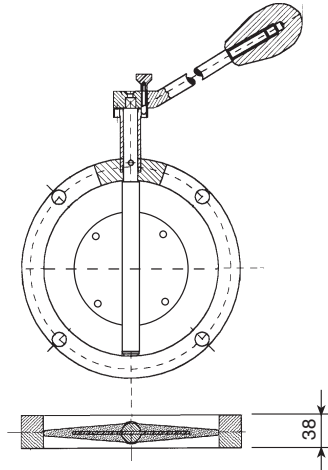
The **Tablet Valve** RCRC with pneumatic actuator, solenoid valve NAMUR and limit switches.

# Special series examples

## Series "H" (heavy duty)



Type WW



### Tablet Valve heavy "H" Series stainless steel - silicone

(available in all body types)  
Body from block.

Suitable for:

- flow control of very hard pills and granules
- flow regulation of hard, small tablets

The stainless steel half bodies have no gasket.

Actuation: by handle or pneumatic actuator.

### Tablet Valve "K" Series plastic-silicone

(available in all body types)

Intended to be used when the stainless steel body is not requested or can not be utilized.

Suitable to be installed on plastic containers and BINS (PVC).  
Stainless steel vane can be used with plastic half bodies.  
Available without gasket, on request.

Actuation: by handle or pneumatic actuator.

## Series "K" (plastic)



Type RCRC

## Series "E" (economic)



Type U

### Tablet Valve "E" Series economic stainless steel-silicone

(available only in a model Type U)

Very light, formed from stainless steel tube of AISI 316 (DIN 1.4401), low cost.

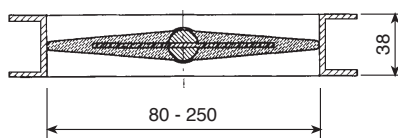
Suitable to:

- control the flow of granules, empty capsule, pills, tablets.
- in the ducting, regulate air-conditioning, (white and sterile rooms).
- regulate very hot air in the conduct of drying tunnel ducting.

Quick release through special «CLAMP» or welded on the piping.

The stainless steel body has no gasket.

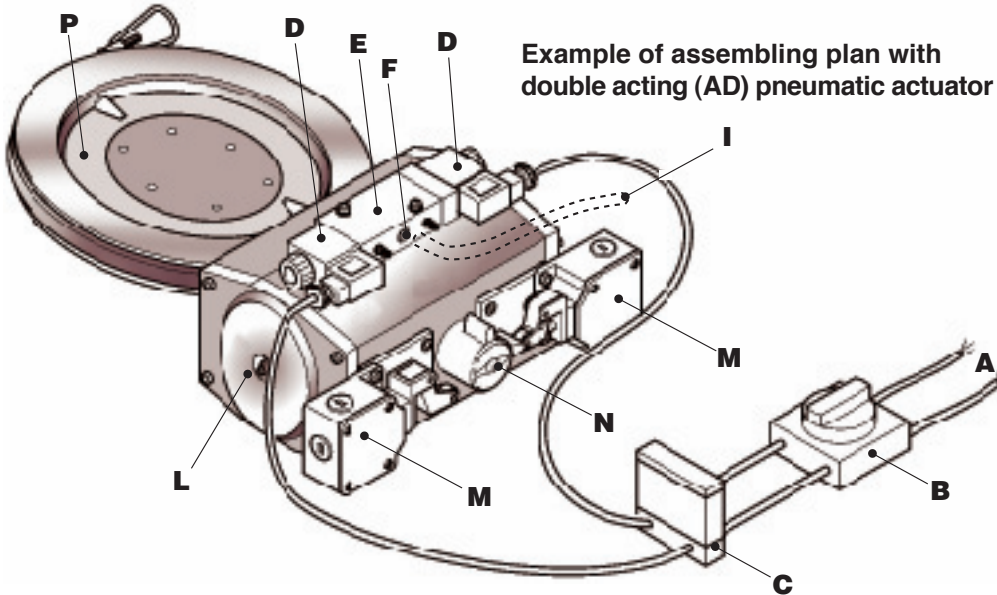
Actuation: only with handle.



These series are available in diameters from 80 to 250 with the same overall dimensions as the standard models and Sole Valve

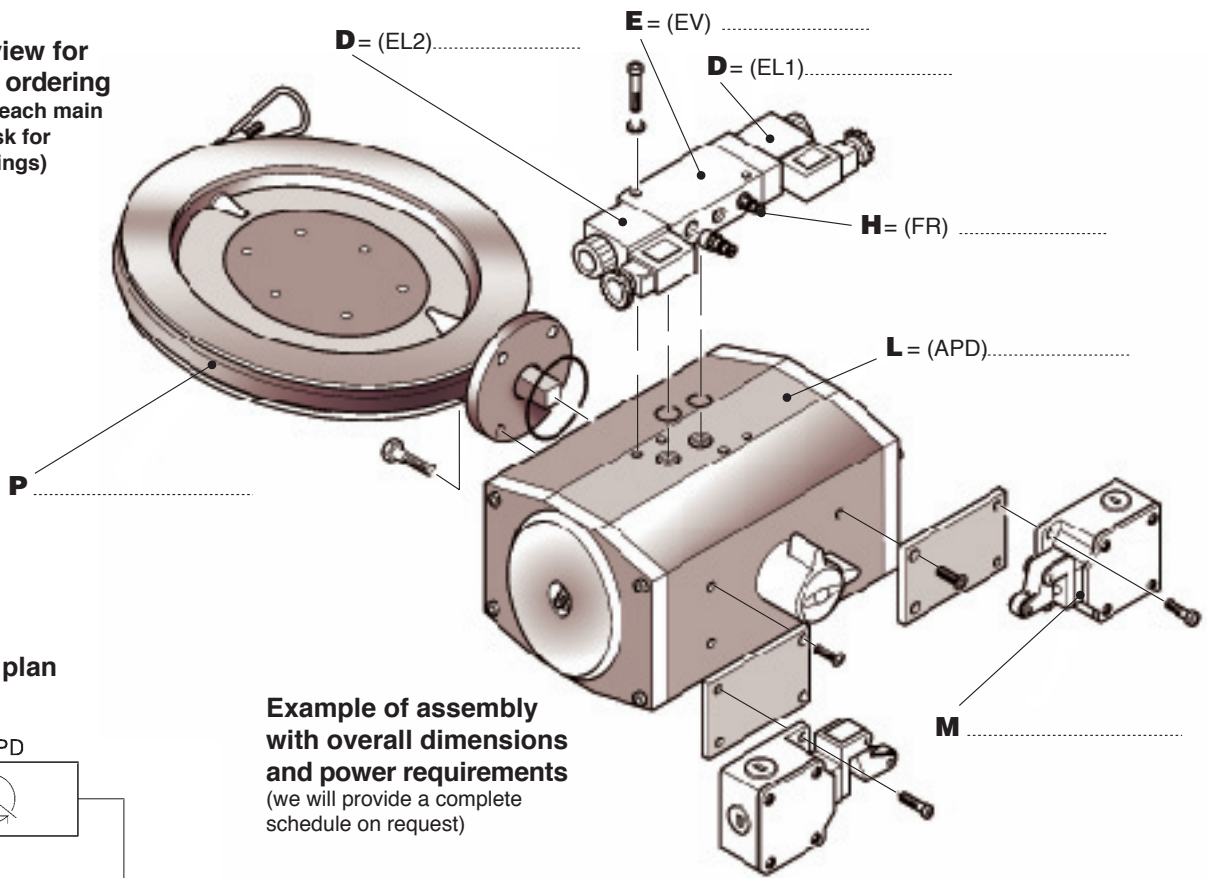


# Technical enclosures examples

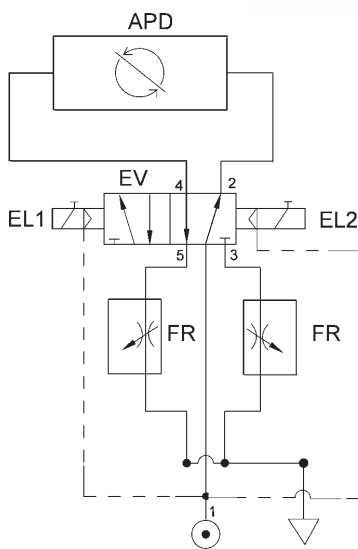


Pos.	Item
<b>A</b>	Electric supply
<b>B</b>	Selector switch
<b>C</b>	Relay
<b>D</b>	Solenoid
<b>E</b>	5/3 ways Solenoid Valve
<b>F</b>	Inlet air 2 - 6 bar (30 - 87 psi)
<b>G</b>	Air exhaust
<b>H</b>	Flow controllers
<b>I</b>	Air supply pipe
<b>L</b>	AD actuator 90°
<b>M</b>	Limit switch
<b>N</b>	Position cam On/Off
<b>P</b>	Tablet Valve
<b>Q</b>	Movement adjusting On/Off screw
<b>R</b>	Electric cablepress
<b>S</b>	Electric connector

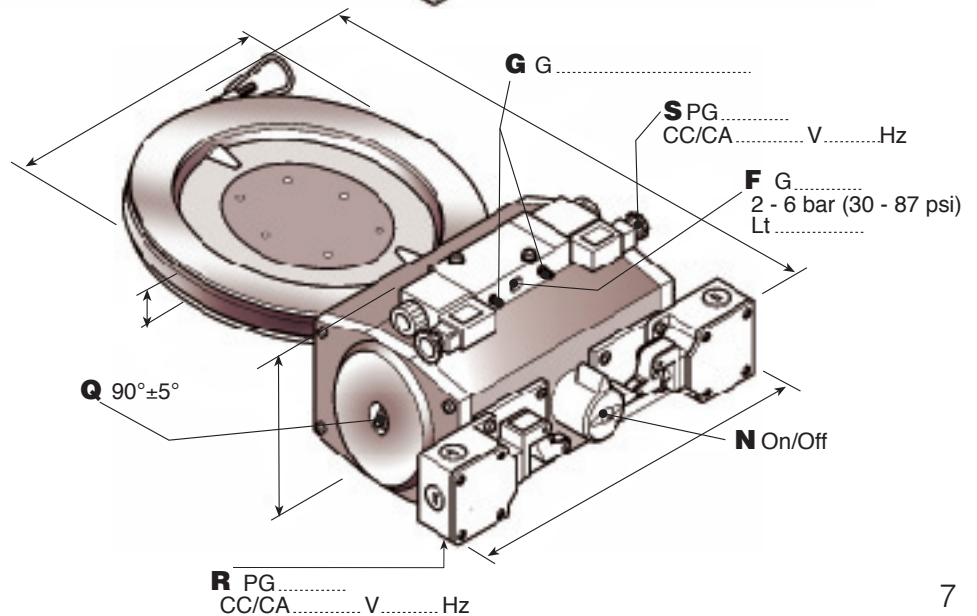
Exploded view for spare parts ordering (for spare for each main component ask for detailed drawings)



## Pneumatic plan

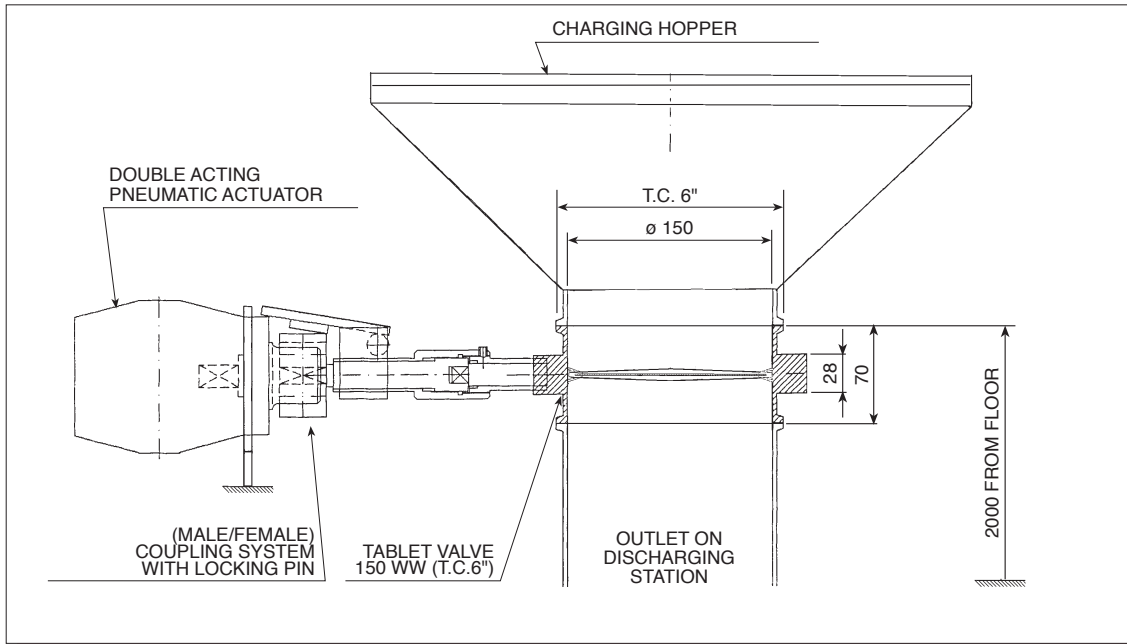
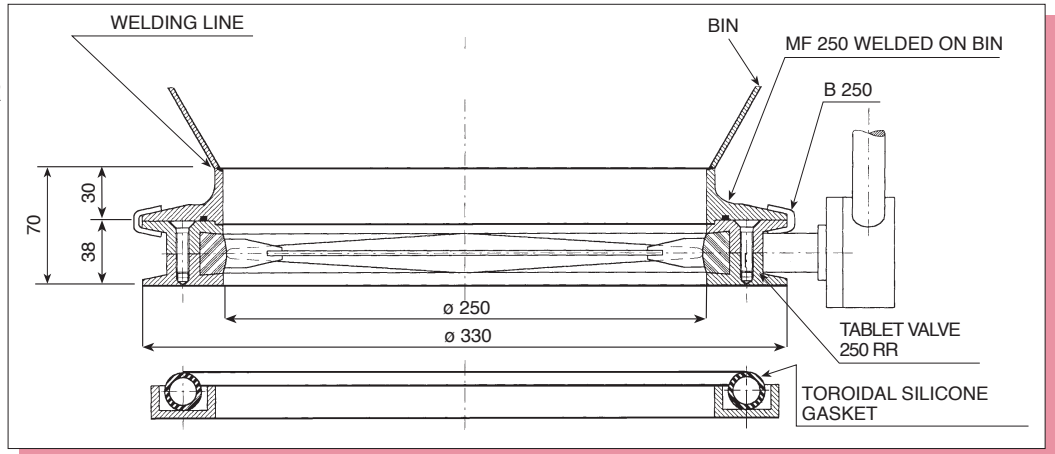


Example of assembly with overall dimensions and power requirements (we will provide a complete schedule on request)



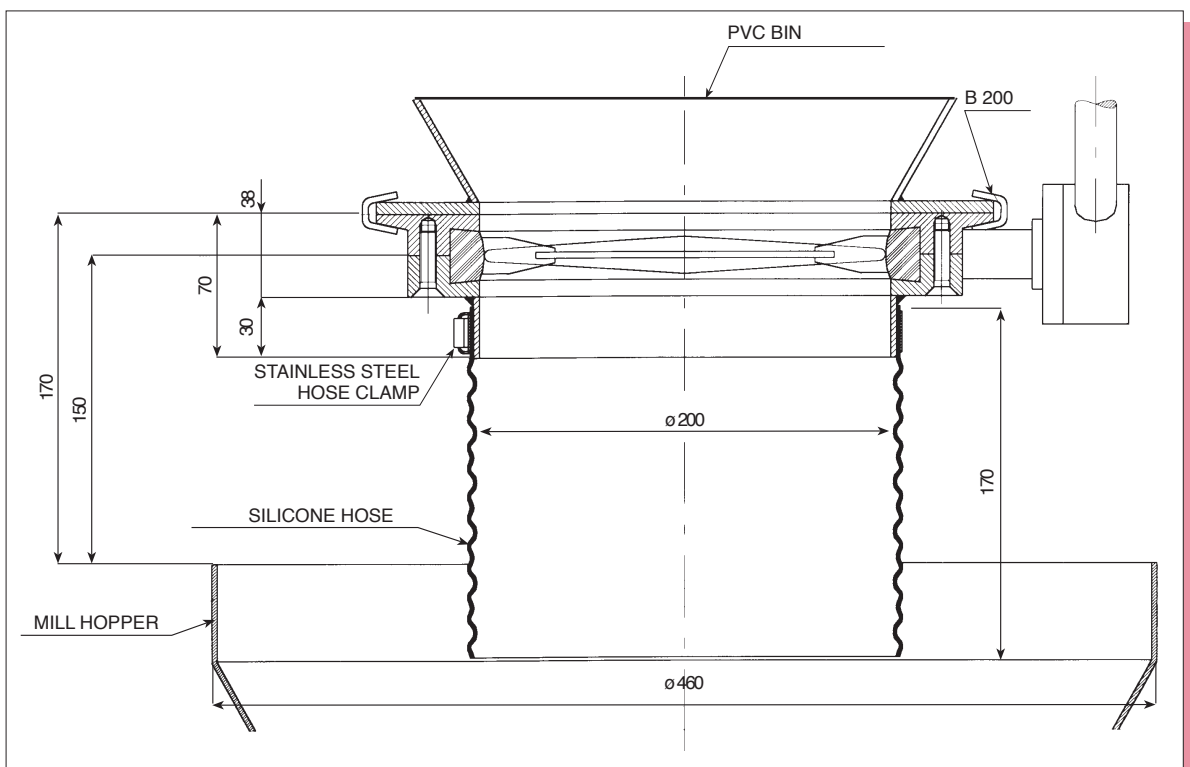
# Applications examples

**Tablet Valve 250 RR**  
with MF 250 welded on  
BIN and «CLAMP»



**Tablet Valve 150 WW (T.C. 6'')**  
below the hopper. Double acting  
pneumatic actuator with (male/female)  
coupling system. The female  
halfsystem is fixed  
on the discharging  
station, the male  
halfsystem is fixed  
on the valve.

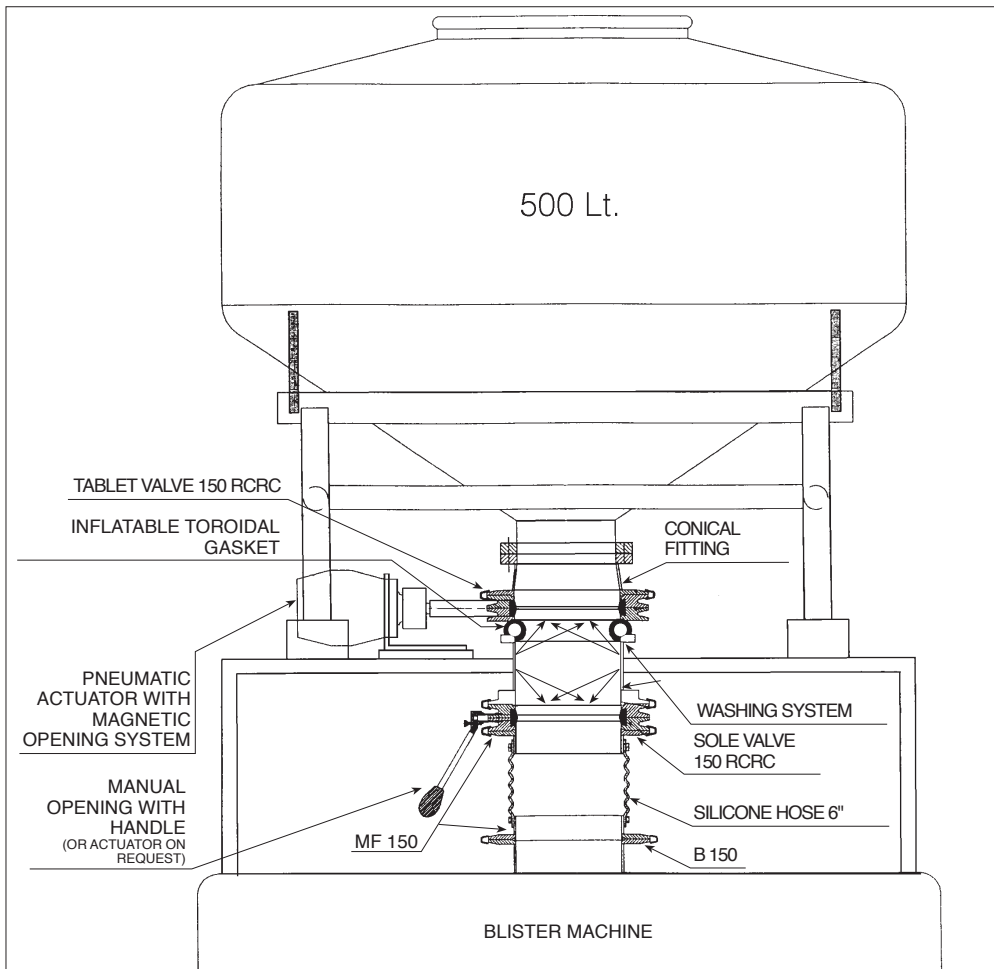
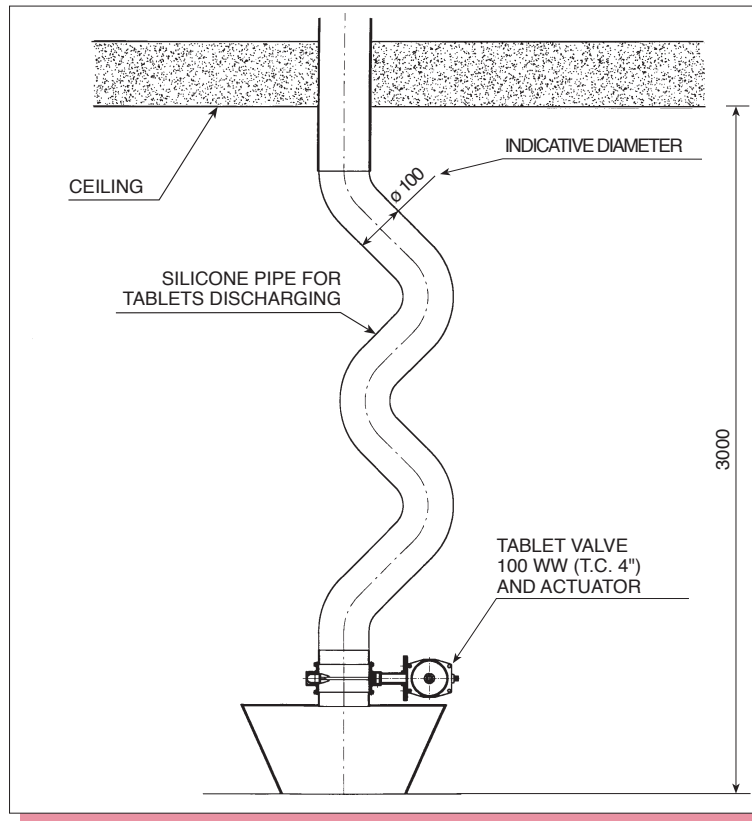
**Tablet Valve 200 WR.**  
Held by quick  
release  
«CLAMP» to  
PVC BIN.  
Outlet formed  
using large  
diameter  
silicone hose  
fixed to a mill  
hopper.





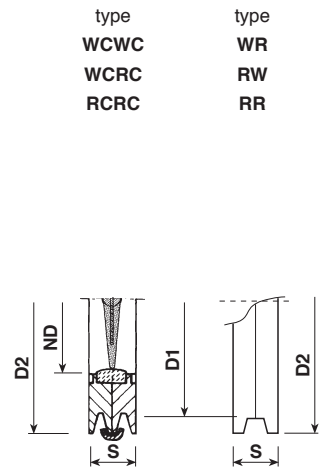
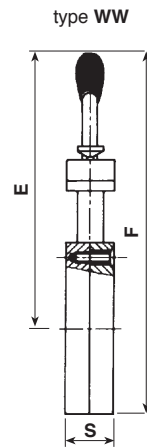
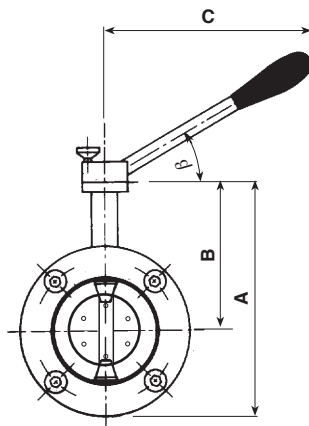
# Feeding systems examples

**ZIG-ZAG** silicone transparent pipe conduit fit for vertical tablets transfer from one floor to another. The speed of descent is controlled which avoids the tablets becoming chipped or cracked. The quick released **Tablet Valve 100 WW (T.C. 4")** controls the flow below the pipe.



BIN for tablets complete with discharging system above a blister machine. It's composed of a **Tablet Valve 150 RCRC** operated by a pneumatic actuator fixed on the discharging station and linked with magnetic coupling to the valve. The entry to the receiving hopper is protected using a 150 RCRC antidust Sole Valve. Environmental contamination is prevented after discharge by using air purge or nitrogen "washing system".

# Actuations, dimensions and features



type  
WCWC  
WCRC  
RCRC

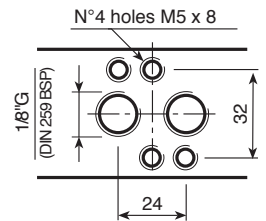
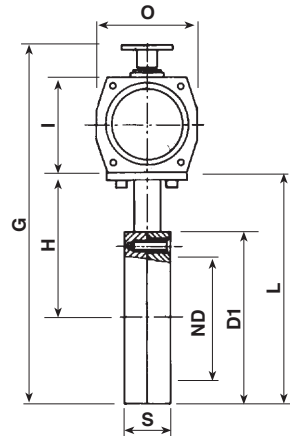
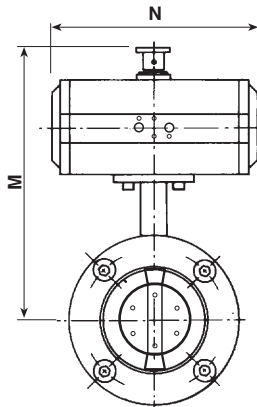
type  
WR  
RW  
RR

## — Handle

On/Off or multiposition stainless steel handle with bakelite knob (silicone on request).

If requested can be supplied:

- 45° handle (L45)
- quick release sanitary handle (LQR)
- security removable handle (LES)



## — Pneumatic actuator

Rotary pneumatic double (**AD**) or simple (**RS**) effect actuator anodised aluminium ISO 5211. Air control 2 - 6 bar (30 - 87 psi).

**Air consumption**, at the pressure of 5.6 bar (80 psi): **0.1 litres**.

If requested it can be equipped with:

- **stainless steel** actuator
- NAMUR mono or bistable solenoid valve 3/2, 5/2 and 5/3 - standard and EEx - rated (explosion-proof)
- proximity, pneumatic, electrical limit switches
- pneumatic rotary positioner for partial opening

ND	D1	D2	S	A	B	C	$\beta$	E	F	G	H	I	L	M	N	O
	130	160	38	185	120	280	30°	290	355	317	120	100	185	252	162	85
	150	180	38	205	130	280	30°	300	375	337	130	100	205	262	162	85
	200	230	38	255	155	280	30°	325	425	387	155	100	255	287	162	85
	250	280	38	305	180	280	30°	350	475	437	180	100	305	312	162	85
	300	330	38	355	205	280	30°	375	525	485	205	100	355	335	162	85

Dimension and technical details are subjected to variations without notice.  
The measurement for **A, F, G** and **L** related to **D1**; dimensions for **D2** add **15 mm** to **D1**.

## Features

- Stainless steel silicone coated vane with AISI 316 (DIN 1.4401) body, silicone seal (on request vane coating and seal in others elastomers too)
- Satin finished body (mirror polished on request)
- No seal type O-Ring (OR) on the shafts
- Easy to disassemble, inspect, clean, particularly the quick release series with «CLAMP»
- Very light and compact
- Materials: stainless steel, silicone seal and vane
- Manufactured according to G.M.P. norms

- Allows the handling of capsules, tablets, pills, rubber and silicone caps, without any damage to the product
- Interchangeable with SOLE VALVE and ROTARY VALVE (except type U)
- Sterilisable also by autoclaving

## Applications

- It can be installed on containers for capsules, tablets, pills, rubber and silicone caps.
- For the handling of any fragile or delicate products

# Assembling, types and weights

Model	Valve in section	Type
Wafer - Q. clean + welded spigot		WCWC +S
Wafer + welded spigot		WW +S
Wafer - Q. release + mounting flange + «CLAMP» band		WR + MF + B
Wafer - Q. clean - Q. release + mounting flange + «CLAMP» band		WCRC + MF + B
Wafer + two clamping flanges		WW + 2F
Wafer with clearance holes + two clamping flanges		WW + FP
Wafer with dead holes + support flange		WW + FVC
Wafer with clearance holes + support flange		WW + FVP

Tablet Valve: Applications Table

----- Limit of our supply

For the exploded view and the order example see SOLE VALVE catalogue

ND	ACTUATOR AD / RS	VALVE BODY-WEIGHT IN KG					
		WW	WR RW	RR	WCWC	WCRC	RCRC
80	3 AD / RS	3	3	3.2	3.5	3.6	4
100	3 AD / RS	3.5	3.7	3.9	4.3	4.6	5
150	3 AD / RS	4.8	5.1	5.4	5.8	6.1	6.6
200	3 AD / RS	6.6	6.9	7.1	7.8	8.2	8.7
250 L	3 AD / RS	7.6	7.9	8.2	8.9	9.4	10

ACTUATOR WEIGHT type 3 AD: 2.3 kg; type 3 RS: 2.6 kg

Model	Valve in section	Type
Wafer		W
Quick release		R
Wafer, Quick clean		WC
Quick clean, quick release		RC
Wafer		WW
Wafer - Q. release screws on W side		WR
Wafer - Q. release screws on R side		RW
Q. release - Q. release		RR
Wafer - Q. clean (without screws)		WCWC
Wafer - Q. clean - Q. release		WCRC
Q. release - Q. clean		RCRC
Hand lever with locking pin		L
Double or simple acting pneumatic actuator		AD / RS
«CLAMP» band		B
Mounting flange Mounting flange		MF *
Blanking plate		P
Spigot welded on the valve		S *
Hopper and spigot welded on the valve		TS

Ancillaries

\* Standard measurement: welded spigot S 3 mm thickness, Mounting flange MF spigot thickness 5 mm, both of height 30 mm



The MF mounting flange can be supplied with male end MF/M if connected with valves or female end MF/F for other requirements. It exists also MF/M + OR and MF/F + OR; the same for P blanking plates P/M, P/F, P/M + OR, P/F + OR. OR are of silicon, if requested of other elastomers.





**CO.RA. s.r.l. - I - 55010 SPIANATE - Altopascio (Lucca) - Italy - Loc. Chiappini, 51**  
Tel. ++ 39 583 20 5 90 r.a. - Fax ++ 39 583 20 4 81  
email: [info@coraitaly.net](mailto:info@coraitaly.net) - website: <http://www.coraitaly.net>