

Unique Sanitary Flexible Connection Systems

Servolift Offers a wide range of Flexible Compensators for all sanitary powder applications



Flexible Solutions for you**Conical FlexiDucts**

Conical Flexiducts are a range of flexible connectors developed to make the joining of dissimilar sized pipes simple. The ends are moulded to allow them to be used in place of the basket of standard quick couplings. Ideal for absorbing vibration and also allow manipulation to dislodge any bridges that form at the restriction.

Materials: Virgin translucent silicone rubber compliant to CFR(FDA) standard 177.2600 and USP class VI. Moulded in a class 100,000 clean room. (Certificate supplied with each duct)

Method of use: Ducts are clamped to adjacent flanges using standard clamps and a specially designed clamping ring (See Fig. 1). The clamping ring is removable.

Crevice Free Transition: When used with standard BS4825-3 ferrules there is a crevice free smooth transition from steel to duct leaving no gaps for powder retention to aid CIP cleaning.

Vibration: Absorbs vibrations and ideal for feeding vibrating equipment.

Weighing: Due to their flexibility the ducts are ideal for feeding applications to weighing systems.

Plain Ended Tubes: The Flexiducts are made so that they can be used with plain ended tubes by using a band clamp to secure it to the tube. The formed end of the Flexiduct can be removed if appropriate.

Pressure Rating: Flexiducts are designed to be used at atmospheric pressure.

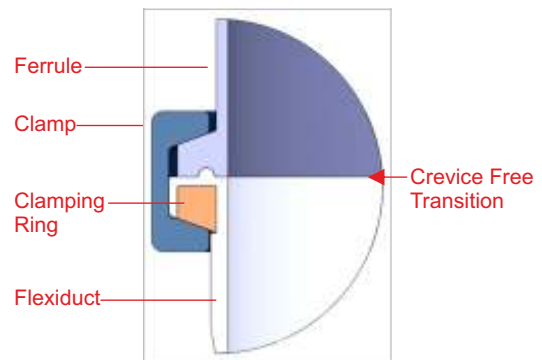


Fig. 1 Quick release clamp

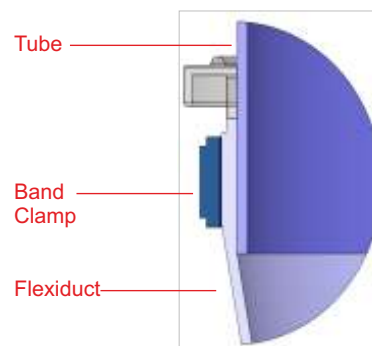
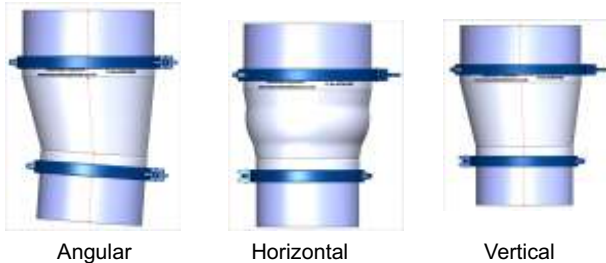


Fig.2 Band clamp fixing for plain ended tubing

Application**Misalignments easily tolerated**

Angular

Horizontal

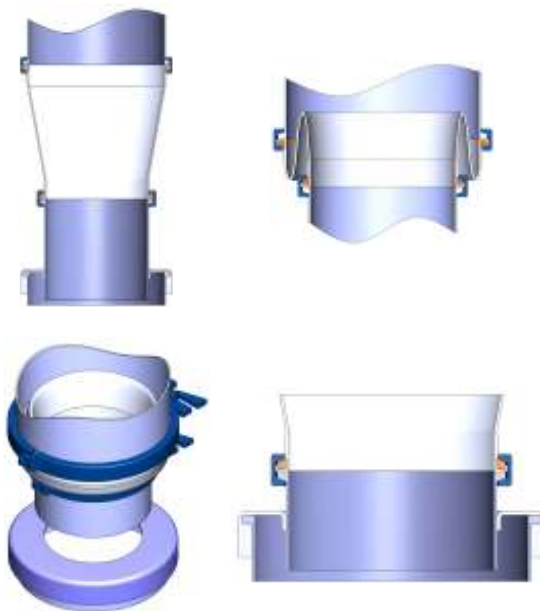
Vertical

Bridge Breaking**Misalignment**

The flexibility of the Flexiduct allows connections between misaligned items.

Bridge breaking

Conical Flexiducts allow bridging problems to be designed out. Restrictions in pipe diameter tend to be where bridges will form. The flexibility of the Flexiduct allows the bridge to be broken using external manual or mechanical manipulation.

Involution**Involution**

The Flexiduct can be pushed in on itself to allow simple connections to be made between a fixed height outlet and inlet to another vessel e.g. discharging from a blender or mill into a mobile vessel. Create a simple effective dust tight system when used in conjunction with one of our dust cap seals (see dust cap seals data sheet).

Components

Ducts are clamped to adjacent flanges using standard clamps and a specifically designed clamping ring.

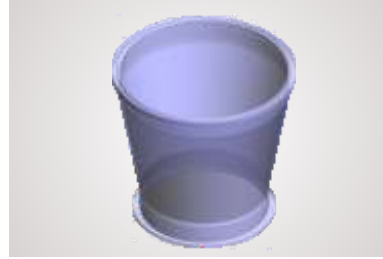
For non-flanged pipes the Flexiduct can be attached using a standard band clamp.

Ferrules: The ducts are designed to work with ferrules to standard BS4825 -Part 3. These correspond to the USA inch sizes also. A ferrule will be required for the equipment to each side of the duct. Please consult us for use with other ferrule types.

Clamping Rings: Made from grade 316 stainless steel the clamping ring is used behind the duct edge to provide the clamping surface.

QR Clamps: Standard Clamps - Single pin in grade 304 stainless steel.

Band Clamps: Made from grade 304 stainless steel and incorporating an over-center latch that can be locked in the closed position.



Conical Flexiduct



Clamping Rings



Ferrules



QR Clamps



Band Clamps

		Diameter 1						
		300	250	200	150	100	75	
Diameter 2	250	Part No.	31790					
		Length	200					
	200	Part No.	31789	31793				
		Length	350	210				
	150	Part No.	31788	32701	34084			
		Length	350	350	200			
	100	Part No.			31794	31795		
		Length			300	205		
	75	Part No.					34437	
		Length					130	
	Clamp part No.		F004586	F004585	F004584	F004583	F003427	F003426
	Ferrule part No.		F000044	F000043	F000041	F000039	F000031	F000027
Ferrule Height		28mm	28mm	28mm	21mm	21mm	21mm	
Clamp Ring Part No.		32502	32501	32500	32499	32503	34438	
Band Clamp Part No.		F003311	F003310	F003309	F003308	F003307	F005964	