



RTTC 80150 SERIES II

Rough Terrain Crane 150-ton (135.0 mt)

- 42.3 ft – 195.3 ft (12.9 – 59.5m) six section formed full power latching boom with no charted capacity deductions for telescoping loads
- Five boom extend modes provide superior capacities: EM1-EM5
- Optional 31 ft – 55 ft (9.4 – 16.8m) two piece, bi-fold, on board lattice attachment with 2°, 15°, 30°, and 45° manual offsets
- Optional 10-31-55 ft (3.0-9.4-16.8m) three piece, bi-fold, on board lattice attachment with 2°, 15°, 30°, 45° manual offsets, and 2° through 45° hydraulic offsets
- Optional three 18 ft (5.5m) lattice fly extensions with 55 ft (16.8m) provide a total attachment length of 109 ft (33.2m)
- 311 ft (94.8m) maximum tip height
- No deducts for stowed attachments
- 22,510 lbs (100.13 kN) maximum winch line pull
- 405 fpm (123.4 m/min) maximum winch line speed
- Electronic joystick controllers
- 6x2 and 6x6 drive with 23.5R25 tires
- Four steering modes: independent front, combination, crab, and independent rear
- Hydrostatic drive
- Fully independent double “A” arm hydraulic suspension

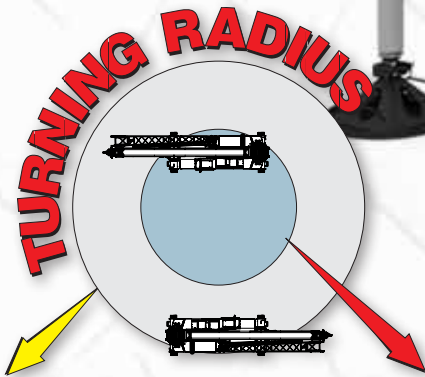


RTTC 80150 **SERIES II**

Rough Terrain Crane 150-ton (135.0 mt)

The industry's most innovative solution to big rough terrain crane maneuverability and transportability!

- Revolutionary hydrostatic drive on a six-wheeled carrier for the ultimate in job site mobility
- Unprecedented transportability
- Maneuverability redefined over 45 tons (40.8 mt) of on-tire capacity



2 wheel steer
<42' (12.8 m)

6 wheel steer
<22' (6.7 m)

Because of the innovative 6x6x6 hydrostatic drive/steer on each wheel, the turning radius of the 30' 2" (9.2 m) long carrier is a remarkable 21' 10" (6.66 m).



Tilting cab 20°
Complete lighting package

Flat deck design and non-slip surface strips on deck

Stowable pontoons

Repositionable ladders on front and back

Link-Belt

Folding viewing mirror for travel

Folding guard rails & work platform

Removable auxiliary winch with hydraulic disconnects

Partial counterweight and no counterweight charts

Catwalks on both sides of upper

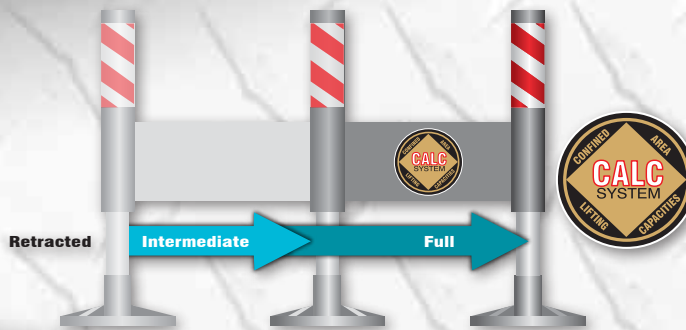
23.5R25 radial tires

Pullout Cabwalk™

Revolutionary hydrostatic drive on a 6-wheel carrier

Not only is this crane easy to get from jobsite to jobsite, it also has extraordinary creep control and jobsite maneuverability, thanks to its hydrostatic powered motors in each wheel. The smaller tires give it an overall height that is ideal for hauling, along with its' individual six-wheel hydrostatic drive, there is no crane in the world, any size, that can come close to the job site maneuverability and performance of the RTC-80150 Series II.

On the job, the RTC-80150 Series II has outstanding on-tire capacity coupled with its long reach, maneuverability, incredible gradeability and low height make it truly an ideal solution for industrial sites.



The Confined Area Lifting Capacities (CALC) system provides three outrigger positions:

- full retraction
- intermediate extension
- full extension

Outrigger pins eliminate guesswork by automatically positioning outriggers at midpoint position.

Six wheel "crab"





Powerful hydraulics

- Removable auxiliary (rear) winch has hydraulic quick disconnects
- For greater productivity and control, multiple pump hydraulic circuit allows simultaneous function
- Piston winch motor provides smooth and precise hoisting
- Main and available auxiliary winch are equally matched in size and performance
- Provisions for the future installation of the auxiliary winch are standard



Operator cab features

- Extra large windows throughout for excellent visibility
- Excellent ventilation via a large sliding door, side and rear windows, and hinged roof window
- 6-way adjustable power tilting seat
- Single or dual axis, electronic operated controller mounted on armrest for outstanding operator comfort
- All gauges, switches, indicators, and controls are located in the operator's forward line of sight
- All gauges and switches are backlit for excellent visibility in low light conditions
- Integral rated capacity limiter aids operator in safe and efficient operation
- In cab comfort is maintained by the standard heater and air conditioning
- Available - Internal and external rated capacity limiter light bars
- Available - cab mounted warning lights
- Winch and right side swing view cameras



↑ Swing-out doors provide exceptional access to engine components.

↓ → Access is superb with strategically-located ladders, steps, catwalks and CabWalk.



Link-Belt
PULSE

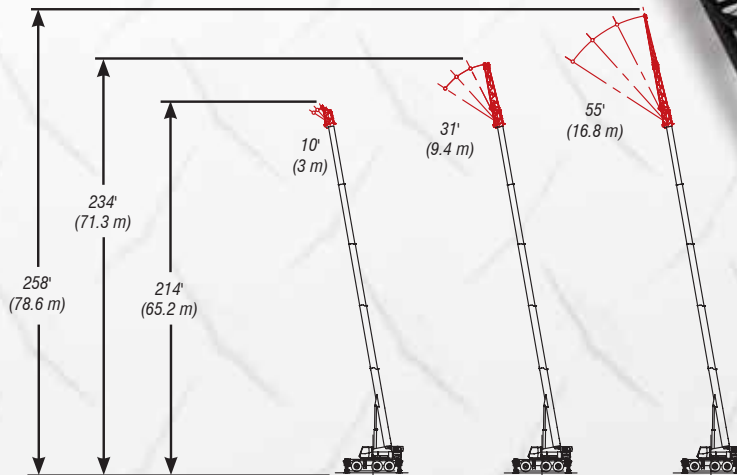
Full power boom with attachment flexibility

- Quick reeve boom head eliminates the need to remove the becket when it becomes necessary to change the reeving
- Five extended modes for superior capacities through the extension range
- Available two or three-piece bi-folding lattice fly which allow the tip section to be stored, thus enhancing the lifting performance when using the base section
- Boom requires no greasing because of ingenious Teflon wear pucks impregnated in the full contact wear pads
- Seven available offset fly options with manual offset with 2°, 15°, 30°, 45°, and 2° through 45° hydraulic offsets
- No deducts for stowed attachments
- The reach of the optional 55 ft (16.8 m) two or three-piece offsettable, bi-folding fly can be extended by adding three optional 18 ft (5.5 m) inserts

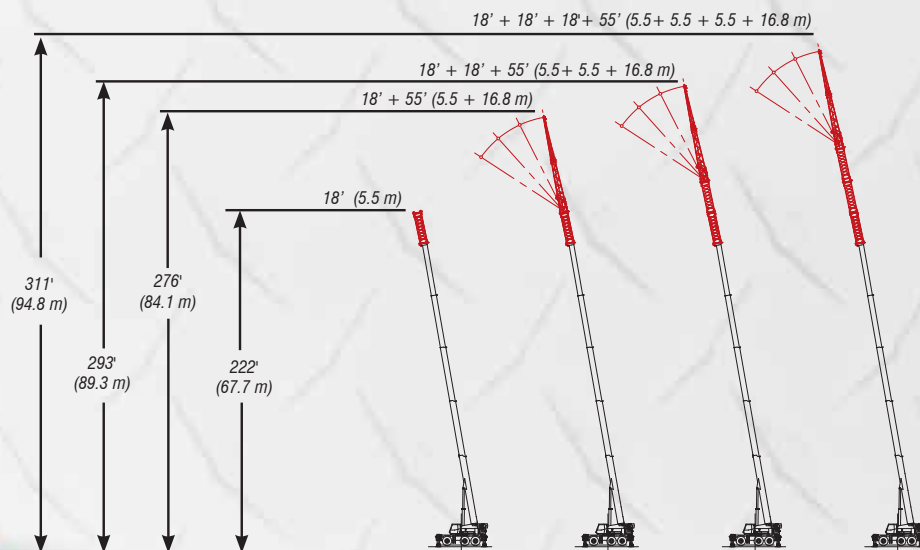


Innovative 10 ft (3.0m) fly is integral to one of the on-board fly options.

Optional Lattice Fly On board



Optional Lattice Fly Extension



cut here



Breakthrough transportability

- Main unit transports under 100,000 lbs (45 mt)
- Unlike any other rough terrain crane in this class, in less than an hour and without a helper crane, the RTC-80150 Series II is ready for transport.
- Unlike other big RT's, boom and tires do not need to be removed for transport.
- Only the counterweights and outrigger boxes need to be removed to get the crane's vehicle width under 10' (3.05 m).
- Because it is under 10' (3.05 m) wide and features allow overall height, the RTC-80150 Series II transports easier than the competition.



Link-Belt
CRANES

Lexington, Kentucky | www.linkbelt.com

©Link-Belt is a registered trademark. Copyright 2014 All rights reserved. We reserve the right to change designs and specifications at any time. Litho in U.S.A 1/14 #4438